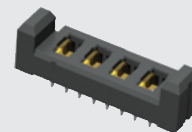
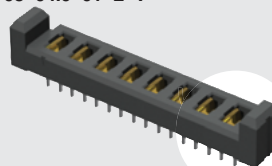


UPS-04-01-01-L-RA-LC

UPS-08-04.0-01-L-V



UPS-04-07.0-03-L-PV

(3,81 mm) .150"

UPS SERIES

DUAL LEAF 20A POWER SOCKET

SPECIFICATIONS

For complete specifications see www.samtec.com?UPS

Insulator Material:

Black LCP

Contact Material:

BeCu

Plating:

Sn or Au over 50µ" (1,27 µm) Ni

Operating Temp Range:

-55°C to +105°C with Tin;

-55°C to +125°C with Gold

Voltage Rating:

375 VAC/530 VDC

RoHS Compliant:

Yes

Lead-Free Solderable:

Yes (-V, -RA options)

Mates with:
UPT

	UPT-V/UPS-V	UPT-RA/UPS-RA
PINS	CURRENT RATING (PER CONTACT)	CURRENT RATING (PER CONTACT)
1	23 A	23.5 A
2	18.6 A	20.1 A
3	17.5 A	16.9 A
4	16.7 A	15.5 A
ALL	14 A	13.3 A
-L PLATING		

Dual leaf blade contacts

Up to 8 Power Pins

Optional Locking Clip

(3,81 mm) .150" pitch

Vertical, Right Angle or Press Fit



• Locking clip option

RECOGNITIONS

For complete scope of recognitions see www.samtec.com/quality



FILE NO. E111594

ALSO AVAILABLE (MOQ Required)

- Solder leads for (2,36 mm) .093" thick board
- Contact Samtec.

TOOLING

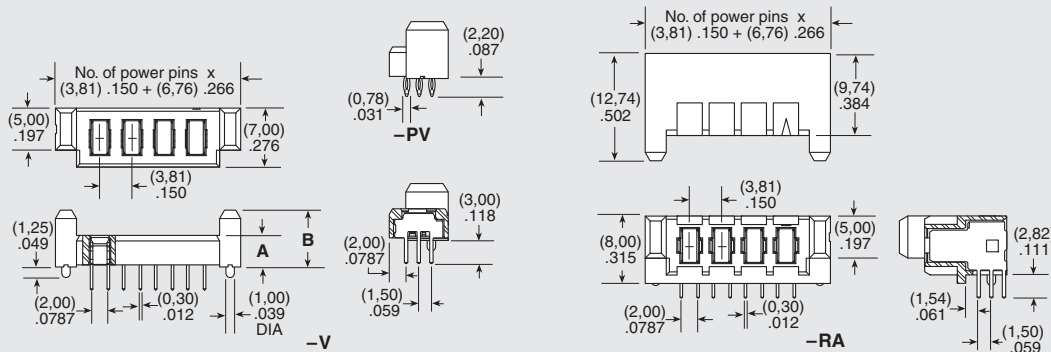
Press fit tooling available.
Contact Samtec.

UPS	POWER PINS	LEAD STYLE	TAIL LENGTH	PLATING OPTION	TAIL	OTHER OPTION
	-02, -04, -06, -08	-01 = RA only -04.0 = (04,0 mm) .157" (-V & -PV only) -07.0 = (07,0 mm) .276" (-V & -PV only)	-01 = Use with (1,60 mm) .062" Thick PCB (-V & -RA only) -03 = Use with (1,60 mm) .062" Thick PCB (-PV only)	-L = 10µ" (0,25 µm) Gold on contact, Matte Tin on tail -T = Matte Tin (-RA option only)	-V = Vertical (Not available with -T plating) -RA = Right Angle -PV = Press Fit, Vertical	-LC = Locking Clip (Manual placement required) Not available with -PV option

LEAD STYLE	A	B
-04.0	(3,75) .148	(6,75) .266
-07.0	(6,75) .266	(9,75) .384

MATED HEIGHT*	
UPS LEAD STYLE	UPT LEAD STYLE
-03.0	(7,00) .276
-04.0	(7,00) .276
-07.0	(10,00) .394

*Processing conditions will affect mated height.



Note: Some sizes, styles and options are non-standard, non-returnable.

Mouser Electronics

Authorized Distributor

Click to View Pricing, Inventory, Delivery & Lifecycle Information:

[Samtec:](#)

[UPS-06-01-01-L-RA](#) [UPS-06-07.0-01-L-V](#)