

DO NOT
SCALE FROM
THIS PRINT

PRFBA-100-P-185-J-S

ADAPTER TYPE
-BA: BETWEEN SERIES ADAPTER

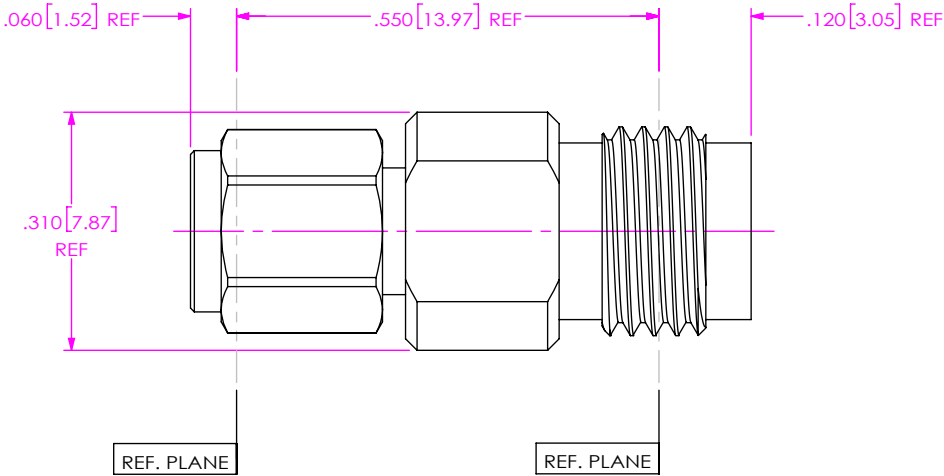
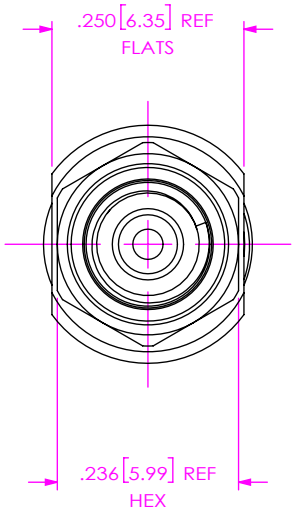
END 1 SERIES
-100: 1.0mm

END 1 GENDER
-P: PLUG

ORIENTATION
-S: STRAIGHT

END 2 GENDER
-J: JACK

END 2 SERIES
-185: 1.85mm



- NOTES:
- MATERIAL:
BODY, BUSHING & COUPLING NUT: 303 STAINLESS STEEL.
CONTACT: BeCu C17300.
LOCK RING: BeCu C17200.
DIELECTRIC BEAD: ULTEM.
SUPPORT BEAD: PTFE.
GASKET: SILICONE RUBBER.
 - FINISH:
BODY, BUSHING & COUPLING NUT: PASSIVATED.
CONTACT: GOLD OVER NICKEL PLATE,
50 μ" MIN GOLD OVER 50 μ" MIN NICKEL.
 - PCI P/N: 2258.

UNLESS OTHERWISE SPECIFIED,
DIMENSIONS ARE IN INCHES.
TOLERANCES ARE:
DECIMALS ANGLES
.XX: ±.01 [0.3] 1°
.XXX: ±.005 [0.13]
.XXXX: ±.0005 [0.013]

PROPRIETARY NOTE
THIS DOCUMENT CONTAINS CONFIDENTIAL AND
PROPRIETARY INFORMATION AND ALL DESIGN,
MANUFACTURING, REPRODUCTION, USE, PATENT RIGHTS
AND SALES RIGHTS ARE EXPRESSLY RESERVED BY SAMTEC,
INC. THIS DOCUMENT SHALL NOT BE DISCLOSED, IN WHOLE
OR PART, TO ANY UNAUTHORIZED PERSON OR ENTITY NOR
REPRODUCED, TRANSFERRED OR INCORPORATED IN ANY
OTHER PROJECT IN ANY MANNER WITHOUT THE EXPRESS
WRITTEN CONSENT OF SAMTEC, INC.

samtec

520 PARK EAST BLVD, NEW ALBANY, IN 47150
PHONE: 812-944-6733 FAX: 812-948-5047
e-Mail info@SAMTEC.com code 55322

DO NOT SCALE DRAWING

SHEET SCALE: 3.5:1

DESCRIPTION: ADAPTER, 1.0MM PLUG TO
1.85MM JACK

DWG. NO. PRFBA-100-P-185-J-S

BY: EVE L 09/25/2020 SHEET 1 OF 1

Mouser Electronics

Authorized Distributor

Click to View Pricing, Inventory, Delivery & Lifecycle Information:

[Samtec:](#)

[PRFBA-100-P-185-J-S](#)