

(1.00 mm) .0394" PITCH • SINGLE ROW DISCRETE WIRE SOCKET



SERIES	PINS PER ROW	WIRE GAUGE	PLATING OPTION	ASSEMBLED LENGTH	OPTION
--------	--------------	------------	----------------	------------------	--------

S1SS = Single Row PVC Cable S1SST = Single Row Blue *Teflon® Cable (28 AWG only)	-02, -03, -05, -07, -10 -15, -20 (Standard sizes)	-28 = 28 AWG -28C = 28 AWG Color Coded Cable (S1SS only) -30 = 30 AWG -30C = 30 AWG Color Coded Cable (S1SS only)	-GF = 3 μ" (0.07 μm) Gold on contact and tail	-"XX.XX" = Assembled Length in Inches (45.72 mm) 01.80" min.	(Required Callout) -L = Single Ended With Latch -L1 = Double Ended Latch down, straight (Pin 1 to Pin 1) -L3 = Double Ended Latch up, straight (Pin 1 to Pin N) -S = Single Ended No Latch -D-NUS = Double Ended No Latch, "N" up, straight -D-NDS = Double Ended No Latch, "N" down, straight
---	---	--	---	--	--

S1SS(T)

Board Mates:

T1M

Cable Mates:

T1SS(T), T1PS(T)

SPECIFICATIONS

Insulator Material:

Nylon, White (with latch)
Black, LCP (without latch)

Contact Material:

Phosphor Bronze

Plating:

Au over 50 μ" (1.27 μm) Ni

Operating Temp Range (S1SS(T)/T1M):

-10 °C to +85 °C (PVC)

-40 °C to +125 °C (Teflon®)

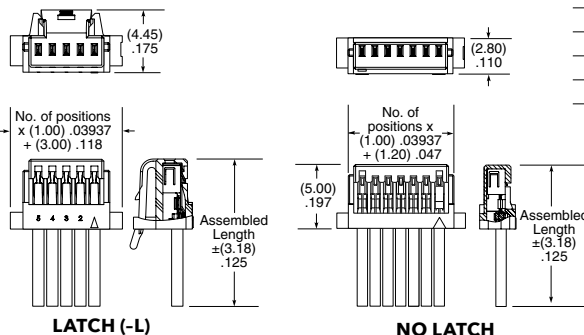
Current Rating (28 AWG):

2.7 A per pin (1 pin powered)

Voltage Rating:

250 VAC/353 VDC

Wire: 28 or 30 AWG



S1SS CABLE COLOR CODING	
PIN	COLOR
1	BROWN
2	RED
3	ORANGE
4	YELLOW
5	GREEN
6	BLUE
7	VIOLET
8	GRAY
9	WHITE
10	BLACK
ETC	REPEAT

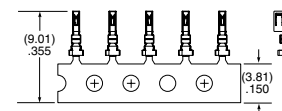
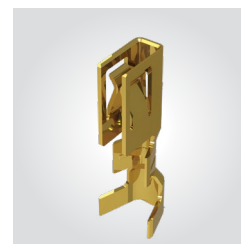
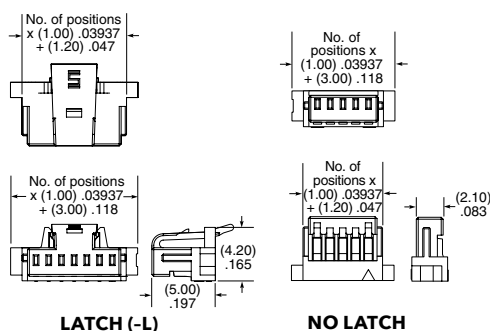
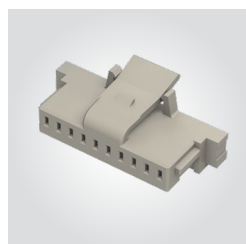
*DuPont™ Teflon® is a registered trademark of the E.I. du Pont de Nemours and Company or its affiliates.

Note:
Teflon® cable is intended for crimp only. Contact Samtec for solderable cable applications.

View complete specifications at: samtec.com?S1SS & samtec.com?S1SST

SERIES	NO. OF POSITIONS	LATCH	SERIES	01	PLATING
--------	------------------	-------	--------	----	---------

ISS1 = Single Row Body	-02, -03, -05, -07, -10, -15, -20	(Leave blank for no latch) -L = Positive Latch	CC09R = Contact, Full Reel (25,000 Parts per Reel)	CC09M = Contact, Mini Reel (5,000 Parts per Reel)	-GF = 3 μ" (0.07 μm) Gold contact and tail
----------------------------------	--	---	--	---	--



TOOLING

Hand Tool: CAT-HT-309-2830-12

Clamp for mounting hand tool: CAT-HT-MNT-01

Mini Applicator: CAT-MC-309-2830-XX-01

Note:

Some lengths, styles and options are non-standard, non-returnable.

View complete specifications at: samtec.com?ISS1, samtec.com?CC09R & samtec.com?CC09M

Mouser Electronics

Authorized Distributor

Click to View Pricing, Inventory, Delivery & Lifecycle Information:

Samtec:

[S1SS-02-30-GF-06.50-S](#) [S1SS-02-28-GF-07.00-D-NUS](#) [S1SS-02-28-GF-07.85-S](#) [S1SS-02-28-GF-07.87-D-NUS](#)
[S1SS-02-28-GF-18.00-D-NUS](#) [S1SS-02-28-GF-19.69-D-NDS](#) [S1SS-02-28-GF-23.62-D-NUS](#) [S1SS-02-28-T-24.00-S](#)
[S1SS-02-30C-GF-04.00-D-NUS](#) [S1SS-02-30C-GF-06.00-D-NUS](#) [S1SS-02-30-GF-07.87-S](#) [S1SS-03-28C-GF-02.40-S](#)
[S1SS-03-28C-GF-04.00-S](#) [S1SS-03-28C-GF-05.51-D-NDS](#) [S1SS-03-28-GF-02.00-S](#) [S1SS-03-28-GF-02.40-D-NUS](#)
[S1SS-03-28-GF-12.00-S](#) [S1SS-02-28-GF-01.80-L](#) [S1SS-02-28-GF-03.93-L1](#) [S1SS-02-28-GF-35.50-D-NDS](#) [S1SS-02-](#)
[28-T-03.93-L](#) [S1SS-02-28-T-03.94-L1](#) [S1SS-02-30-GF-05.00-S](#) [S1SS-02-30-GF-06.00-L](#) [S1SS-02-30-T-08.00-D-NUS](#)
[S1SS-03-28C-GF-01.80-L](#) [S1SS-03-28C-GF-15.00-L](#) [S1SS-03-28-GF-12.00-L1](#) [S1SS-03-28-GF-12.60-L1](#) [S1SS-03-](#)
[28-T-03.93-L](#) [S1SS-03-28-T-03.93-L1](#) [S1SS-03-28-T-03.94-D-NDS](#) [S1SS-03-30C-GF-07.00-L](#) [S1SS-03-30-GF-05.00-](#)
[L](#) [S1SS-03-30-T-21.65-S](#) [S1SS-04-28C-GF-03.00-S](#) [S1SS-04-28-GF-06.00-L](#) [S1SS-04-28-GF-06.00-L1](#) [S1SS-04-28-](#)
[T-03.60-L](#) [S1SS-04-30-GF-35.43-L1](#) [S1SS-05-28C-GF-10.00-L1](#) [S1SS-05-28C-GF-15.00-L](#) [S1SS-05-28-GF-01.80-L1](#)
[S1SS-05-28-GF-01.80-L3](#) [S1SS-05-28-GF-03.93-L](#) [S1SS-05-28-GF-16.00-L](#) [S1SS-05-28-GF-80.00-D-NDS](#) [S1SS-](#)
[05-28-GF-80.00-D-NUS](#) [S1SS-05-28-T-05.00-D-NUS](#) [S1SS-05-28-T-05.00-L1](#) [S1SS-05-28-T-05.00-L3](#) [S1SS-02-30-](#)
[T-02.00-D-NUS](#) [S1SS-02-30-T-12.00-D-NUS](#) [S1SS-03-28C-GF-08.27-D-NDS](#) [S1SS-03-28-GF-07.00-S](#) [S1SS-03-28-](#)
[GF-08.00-S](#) [S1SS-03-28-T-02.00-D-NUS](#) [S1SS-03-28-T-08.00-D-NUS](#) [S1SS-03-30-GF-02.00-S](#) [S1SS-03-30-GF-](#)
[20.00-D-NUS](#) [S1SS-04-28-T-10.00-S](#) [S1SS-04-30-GF-06.00-S](#) [S1SS-04-30-T-04.00-S](#) [S1SS-03-30-GF-05.80-S](#)
[S1SS-04-28-GF-03.50-S](#) [S1SS-04-28-GF-04.00-S](#) [S1SS-04-28-GF-07.00-S](#) [S1SS-04-28-T-07.85-S](#) [S1SS-05-28-GF-](#)
[01.90-D-NUS](#) [S1SS-05-28-GF-02.00-D-NDS](#) [S1SS-05-28-GF-02.50-D-NDS](#) [S1SS-05-28-GF-07.00-S](#) [S1SS-05-28-](#)
[GF-08.00-D-NDS](#) [S1SS-05-28-GF-16.00-D-NUS](#) [S1SS-05-28-GF-18.00-D-NDS](#) [S1SS-05-28-GF-19.00-D-NUS](#) [S1SS-](#)
[05-28-GF-40.00-S](#) [S1SS-05-28-T-06.00-S](#) [S1SS-05-28-T-07.90-D-NUS](#) [S1SS-05-28-T-08.00-D-NDS](#) [S1SS-05-30-GF-](#)
[07.87-S](#) [S1SS-05-30-GF-07.90-D-NDS](#) [S1SS-05-30-T-05.00-S](#) [S1SS-05-30-T-06.00-D-NUS](#) [S1SS-06-28-GF-03.00-S](#)
[S1SS-06-28-GF-04.00-D-NUS](#) [S1SS-06-30-GF-06.00-D-NUS](#) [S1SS-06-30-T-01.80-S](#) [S1SS-05-28C-GF-08.00-D-](#)
[NDS](#) [S1SS-05-28C-GF-12.00-S](#) [S1SS-05-28-GF-05.12-D-NDS](#) [S1SS-05-28-GF-12.00-D-NUS](#) [S1SS-05-28-GF-19.70-](#)
[D-NDS](#) [S1SS-05-28-GF-30.00-D-NUS](#) [S1SS-05-28-T-36.00-S](#) [S1SS-05-30-GF-08.27-D-NDS](#) [S1SS-05-30-GF-10.00-](#)
[S](#) [S1SS-06-28-GF-02.25-D-NUS](#) [S1SS-06-28-GF-10.00-S](#) [S1SS-06-28-T-08.00-D-NDS](#)