

RF047-11RP9-11SP9-0100

RF047-01SP1-11SP9-0100

RF047 SERIES

50 Ω .047" DIA FLEXIBLE CABLE

SPECIFICATIONS

For complete specifications
see www.samtec.com?RF047

RF Connector:

Outer Contact Material:

Brass (SMA),
BeCu (HMHF1)

Contact Material:

Brass (SMA),
BeCu (HMHF1)

Insulator Material:

PTFE

Impedance:

50 Ω

Frequency Range:

0-10 GHz (HMHF1)

0-20 GHz (SMA)

Dielectric Withstanding:

1,000 Vrms (SMA)

CCA-047 (.047")

Cable:

Impedance:

50 Ω microwave

Capacitance:

95.14 pF/meter

Max Attenuation

(cable only):

1.15 dB @ 1 GHz for 1 meter

Conductor Size:

28 AWG (0.29 mm) .011" dia.

Conductor Material:

Silver plated copper

Insulator Material:

FEP

Shield Material:

Metallic Alloy

Jacket Material:

FEP

Jacket Diameter:

(1.42 mm) .056" dia.

Bend Radius:

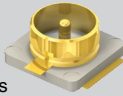
5 mm

Mates with:

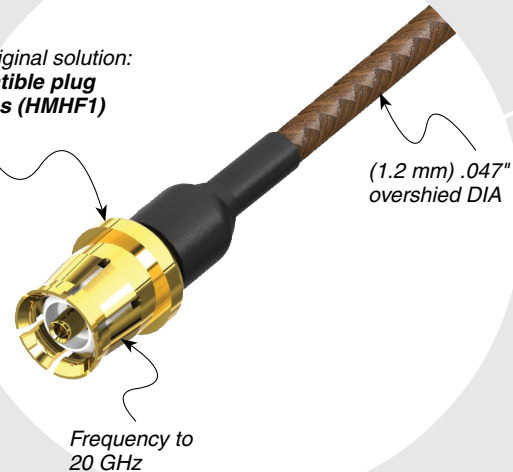
SMA, RSP-122811-01

MATING SOLUTION

- Micro RF PCB connectors for Micro High Frequency RFs
- MHF1 end mates with RSP-122811-01 (Cycles: 30 max.)



A Samtec original solution:
U.FL compatible plug to 500 cycles (HMHF1)



CABLE TYPE

END 1 CONNECTOR

END 2 CONNECTOR

OVERALL LENGTH

RF047

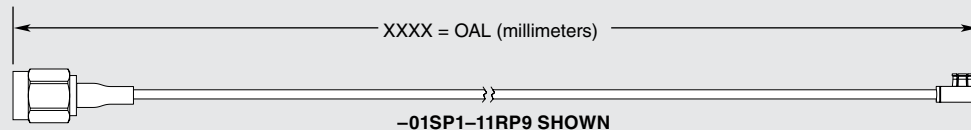
= (1.2 mm) .047" overshield DIA

28 AWG Flexible coax cable

Specify END OPTIONS from chart

—"XXXX"

= Overall Length in millimeters
-0100 (100 mm) 3.94" minimum



ALSO AVAILABLE (MOQ Required)

- Additional stripping and tinning options

OTHER SOLUTIONS

- Cable connector kits (see cable components catalog pages)

END OPTIONS

| | |
|--|--|
| -01SP1 = SMA Straight Plug (30 μ " (0.76 μ m) Gold on Center Contact, Gold Flash on Shell) | |
| -11SP9 = HMHF1 U.FL Straight Plug (30 μ " (0.76 μ m) Gold on Center Contact, Gold Flash on Shell) | |
| -11RP9 = HMHF1 U.FL Right-angle Plug (30 μ " (0.76 μ m) Gold on Center Contact, Gold Flash on Shell) | |
| -SING = Single Ended (End 2 Callout) | |
| -XXXXXX = Stripped & Tinned (End 2 Callout) | |

STRIPPED & TINNED (Dimensions in mm)

| CALLOUT | A | B | C |
|---------|-----|-----|-----|
| -303030 | 3.0 | 3.0 | 3.0 |
| -303040 | 3.0 | 3.0 | 4.0 |
| -403030 | 4.0 | 3.0 | 3.0 |
| -403040 | 4.0 | 3.0 | 4.0 |
| -404040 | 4.0 | 4.0 | 4.0 |

Both center conductor and braid shield are stripped, only the center conductor is tinned.

Mouser Electronics

Authorized Distributor

Click to View Pricing, Inventory, Delivery & Lifecycle Information:

Samtec:

[RF047-11RP9-11RP9-0140](#) [RF047-01SP1-11SP9-1000](#)