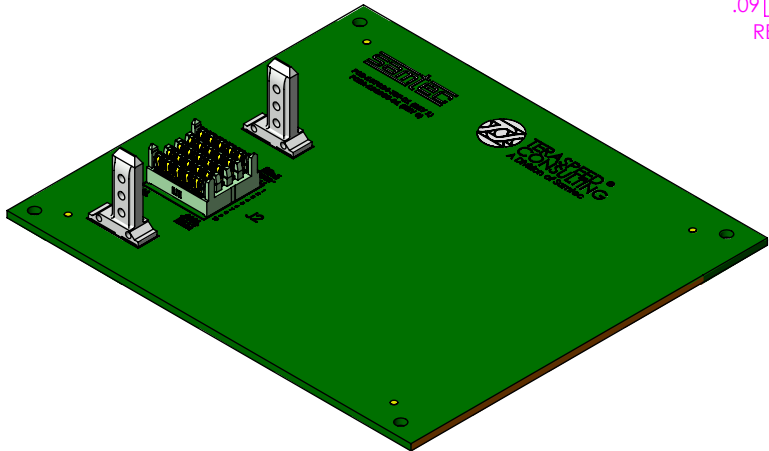
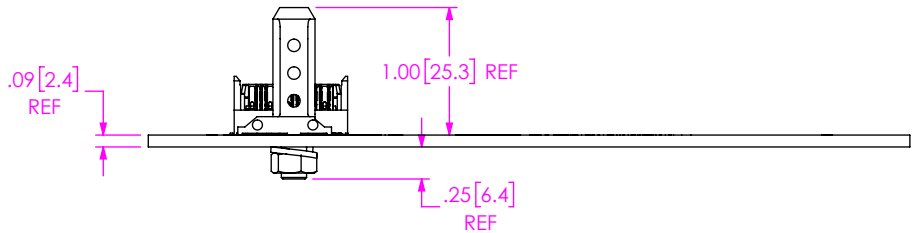
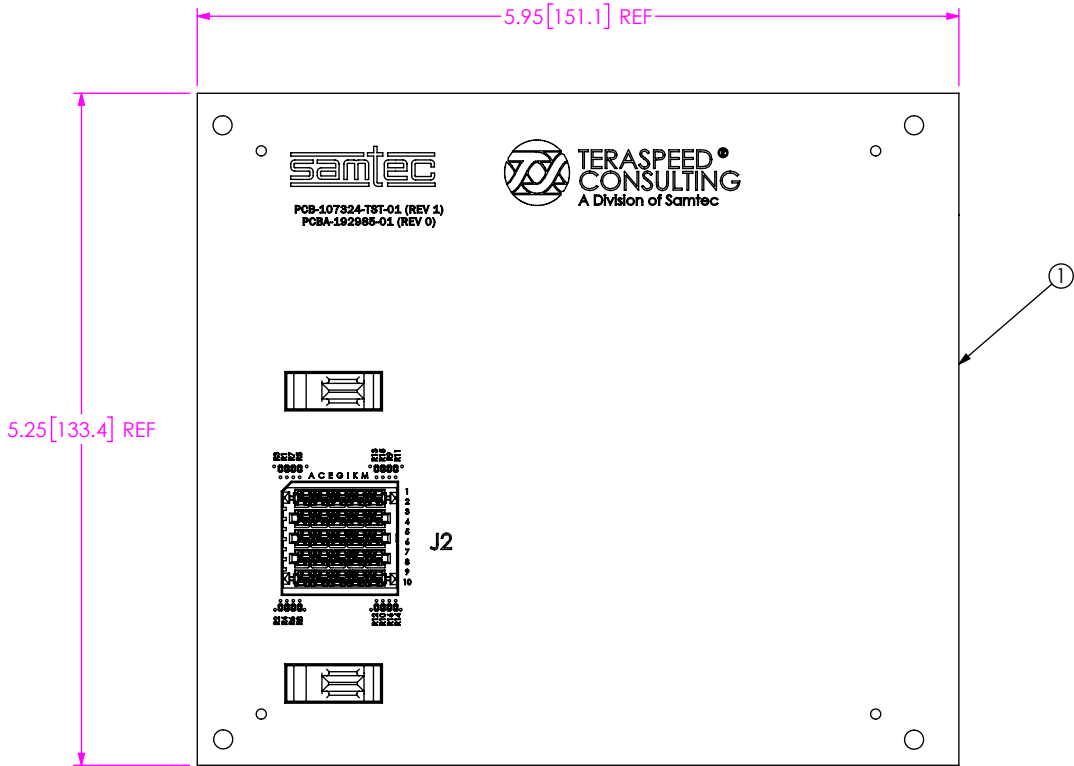


DO NOT
SCALE FROM
THIS PRINT



UNLESS OTHERWISE SPECIFIED,
DIMENSIONS ARE IN INCHES.
TOLERANCES ARE:
DECIMALS ANGLES
.XX: $\pm .01$ [0.3] 2°
.XXX: $\pm .005$ [0.13]
.XXXX: $\pm .0020$ [0.051]

PROPRIETARY NOTE
THIS DOCUMENT CONTAINS CONFIDENTIAL AND
PROPRIETARY INFORMATION AND ALL DESIGN,
MANUFACTURING, REPRODUCTION, USE, PATENT RIGHTS
AND SALES RIGHTS ARE EXPRESSLY RESERVED BY SAMTEC,
INC. THIS DOCUMENT SHALL NOT BE DISCLOSED, IN WHOLE
OR PART, TO ANY UNAUTHORIZED PERSON OR ENTITY NOR
REPRODUCED, TRANSFERRED OR INCORPORATED IN ANY
OTHER PROJECT IN ANY MANNER WITHOUT THE EXPRESS
WRITTEN CONSENT OF SAMTEC, INC.

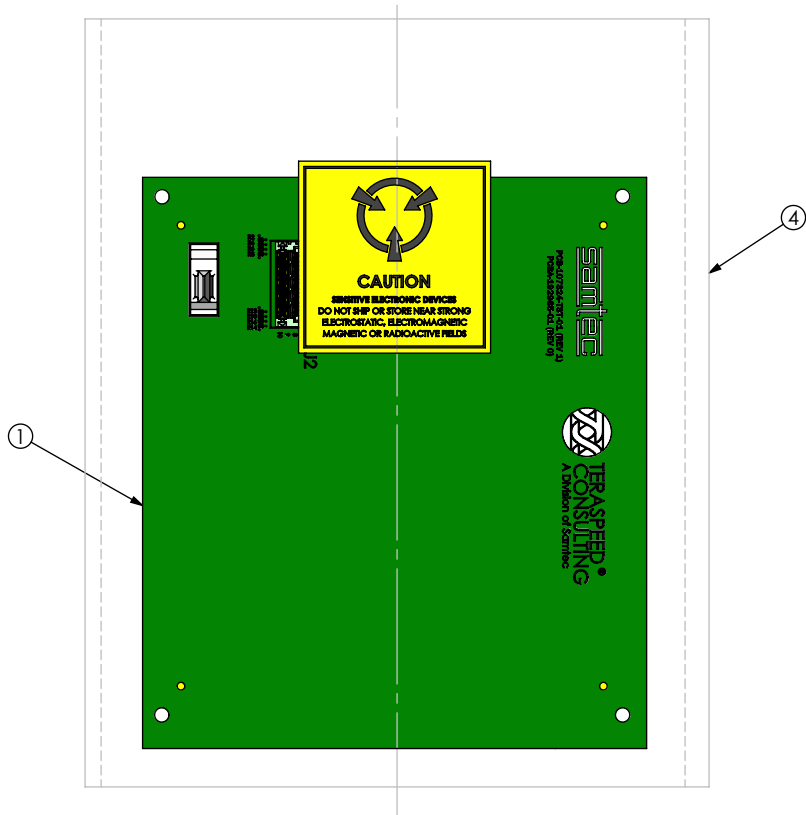
samtec

520 PARK EAST BLVD., NEW ALBANY, IN 47150
PHONE: 812-944-6733 FAX: 812-948-5047
e-Mail: info@SAMTEC.com code 55322


MATERIAL: DO NOT SCALE DRAWING SHEET SCALE: 2:1

DESCRIPTION:	PCB ASSEMBLY
DWG. NO.	REF-200748-01
BY: JEAN W.	09/14/2017 SHEET 1 OF 2

PACKAGING VIEW



BOM TABLE					
ITEM	PART NUMBER	DESCRIPTION	QTY	COST QTY	UOM
1	PCBA-192985-02	PCB ASSEMBLY	1	1	EACH
2	LABEL-SENSITIVE-ELE	PACKAGING LABEL	0	1/500	EACH
3	S-FMC006	PACKAGING SLEEVE	1	1	EACH
4	BG-06-08	PACKAGING BAG	1	1	EACH
5	FP-FMC002	PACKAGING BOX	1	1	EACH
6	CCS-201721-01-MC	INSERT	1	1	EACH

* PROPRIETARY NOTE * THIS DOCUMENT CONTAINS CONFIDENTIAL AND PROPRIETARY INFORMATION AND ALL DESIGN, MANUFACTURING, REPRODUCTION, USE, PATENT RIGHTS AND SALES RIGHTS ARE EXPRESSLY RESERVED BY SAMTEC, INC. THIS DOCUMENT SHALL NOT BE DISCLOSED, IN WHOLE OR PART, TO ANY UNAUTHORIZED PERSON OR ENTITY NOR REPRODUCED, TRANSFERRED OR INCORPORATED IN ANY OTHER PROJECT IN ANY MANNER WITHOUT THE EXPRESS WRITTEN CONSENT OF SAMTEC, INC.	 520 PARK EAST BLVD, NEW ALBANY, IN 47150 PHONE: 812-944-6733 FAX: 812-948-5047 e-Mail info@SAMTEC.com code 55322	
	SHEET SCALE: 2:1	DESCRIPTION: PCB ASSEMBLY
		DWG. NO. REF-200748-01
	SLDDRW	BY: JEAN W. 09/14/2017

Mouser Electronics

Authorized Distributor

Click to View Pricing, Inventory, Delivery & Lifecycle Information:

[Samtec:](#)

[REF-200748-01](#)