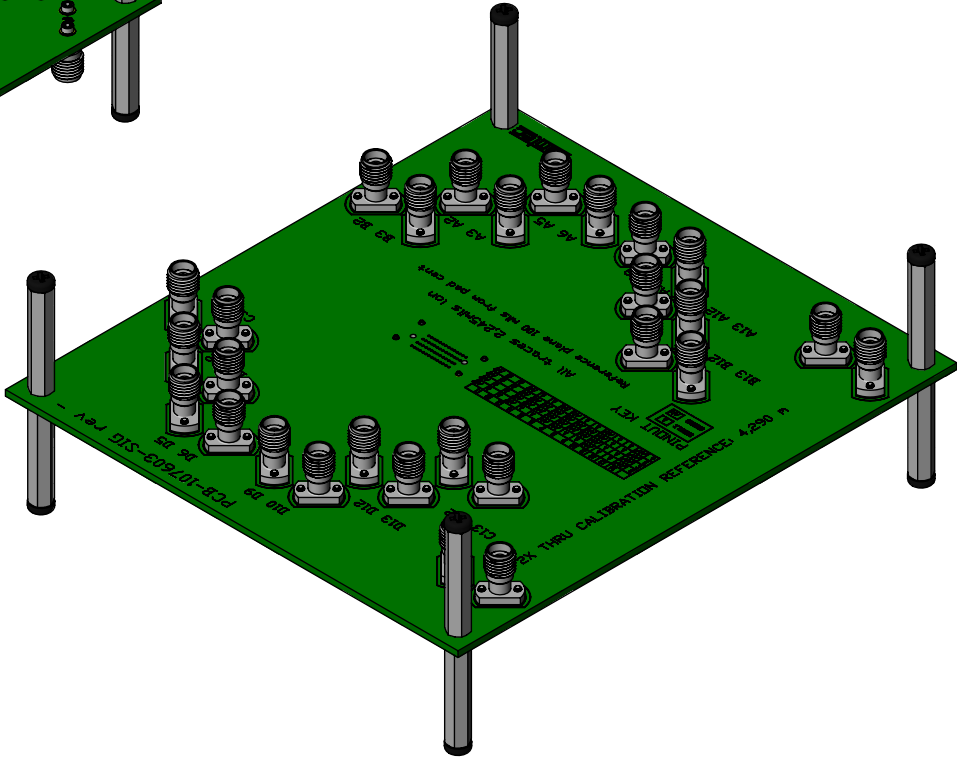
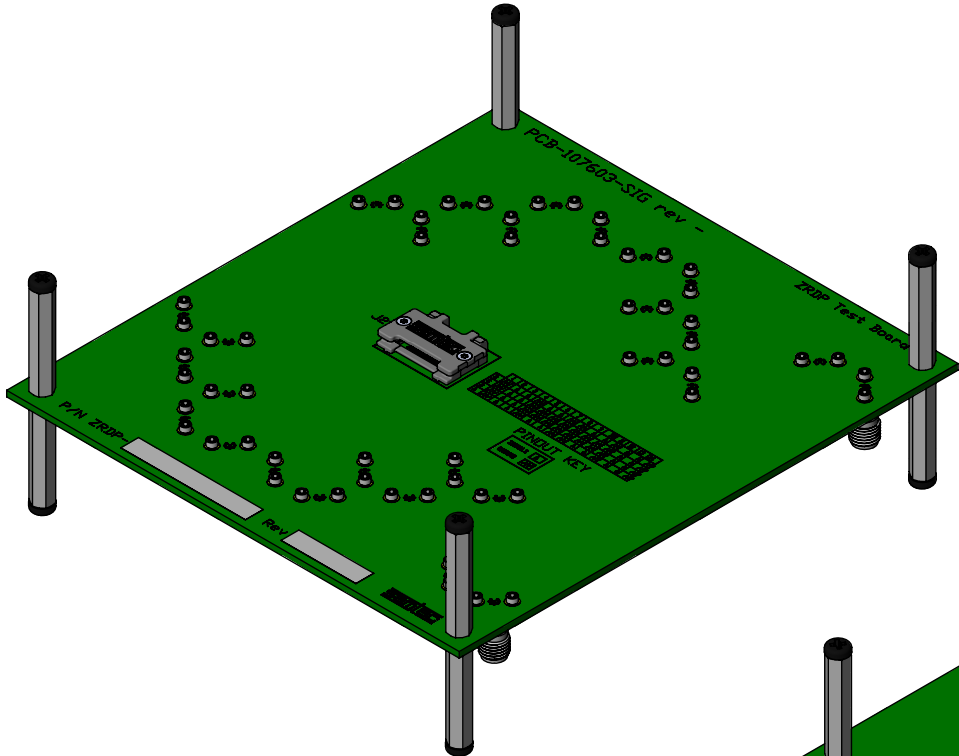


1. EVALUATION BOARD MUST BE USED IN CONJUNCTION WITH ZCI-2-16-Z (Z-RAY INTERPOSER) AND AN EVALUATION CABLE.

Pb THIS PRODUCT MANUFACTURED
WITH LEAD-FREE PROCESSING



DO NOT
SCALE FROM
THIS PRINT

BOM TABLE				
ITEM	PART NUMBER	QTY	COST QTY	DESCRIPTION
1	PCBA-199667-01	1	1	PCB ASSEMBLY

c:\enterprisevault\DWG\MISC\MKTG\REF-199665-01-MKT.SLDDRW

UNLESS OTHERWISE SPECIFIED,
DIMENSIONS ARE IN MILLIMETERS.

TOLERANCES ARE:

DECIMALS	ANGLES
.X: ±0.3[.01]	2 °
.XX: ±0.13[.005]	
.XXX: ±0.051[.0020]	

PROPRIETARY NOTE

THIS DOCUMENT CONTAINS CONFIDENTIAL AND PROPRIETARY INFORMATION AND ALL DESIGN, MANUFACTURING, REPRODUCTION, USE, PATENT RIGHTS AND SALES RIGHTS ARE EXPRESSLY RESERVED BY SAMTEC, INC. THIS DOCUMENT SHALL NOT BE DISCLOSED, IN WHOLE OR PART, TO ANY UNAUTHORIZED PERSON OR ENTITY NOR REPRODUCED, TRANSFERRED OR INCORPORATED IN ANY OTHER PROJECT IN ANY MANNER WITHOUT THE EXPRESS WRITTEN CONSENT OF SAMTEC, INC.

samtec

520 PARK EAST BLVD, NEW ALBANY, IN 47150
PHONE: 812-944-6733 FAX: 812-948-5047
e-Mail: info@SAMTEC.com code 55322

DO NOT SCALE DRAWING SHEET SCALE: 1:1

DESCRIPTION:
ZRDP EVAL BOARD

DWG. NO.
REF-199665-01

BY: JEAN W. 06/02/2017 SHEET 1 OF 1

Mouser Electronics

Authorized Distributor

Click to View Pricing, Inventory, Delivery & Lifecycle Information:

[Samtec:](#)

[REF-199665-01](#)