

RCE-01-G-02.00-BC

RCE, RCEF SERIES

IP68 SEALED ETHERNET PLUG

SPECIFICATIONS

For complete specifications
see www.samtec.com?RCE

Insulator Material:

Black Liquid Crystal Polymer

Contact:

Phosphor Bronze

Operating Temp Range:

-40 °C to +75 °C

Latch:

BeCu

Wire:

24 AWG

Mates with:
RPBE-01, RPCE

Audible click
positive latching

24 AWG

50 μ" (1.27 μm) Gold
on contacts

Meets IP68
requirements for
dust and waterproof
sealing when mated
or with dust cap

ALSO AVAILABLE (MOQ Required)

- Other wire lengths

RCE**CABLE
STYLE****PLATING****WIRE
LENGTH****END
OPTION****-01**

= Outdoor UL

-G= 50 μ" (1.27 μm)
Gold on contact**-02.00**

= (2 m) 78.74"

-03.00

= (3 m) 118.11"

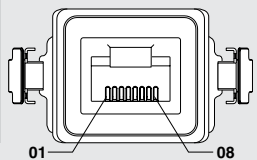
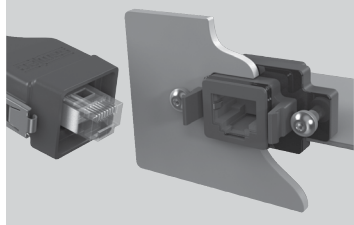
-05.00

= (5 m) 196.85"

Standard lengths

-D= Double End
(Both ends sealed)**-BC**= Blunt Cut
(One end sealed)

APPLICATION



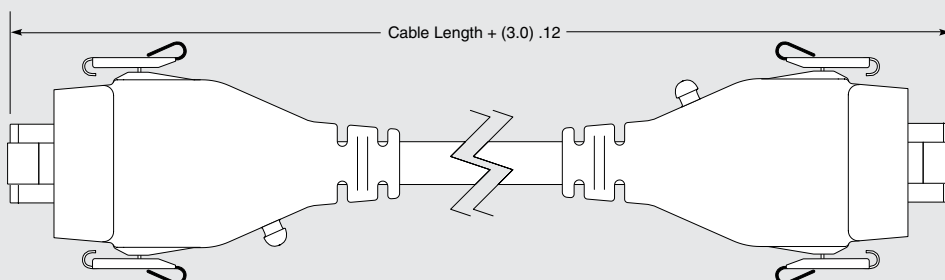
FIELD TERMINATION KIT

- Ethernet Field Termination Kit available for long cable run and small-opening applications so housings can be customer-installed after the runs are complete.
- RCEF-G-01 Series (For cable outside diameter range of 5.00-5.75 mm)
- RCEF-G-02 Series (For cable outside diameter range of 5.75-6.50 mm)

DUST CAPS

STYLE	RCE
-01	DCA-RCE-01-01

Note:
Meets IP68 requirements for
dust and waterproof sealing
when mated or with dust cap.



Mouser Electronics

Authorized Distributor

Click to View Pricing, Inventory, Delivery & Lifecycle Information:

[Samtec:](#)

[RCEF-G-01](#) [RCEF-G-02](#)