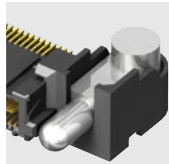
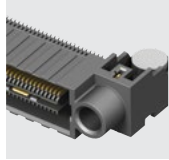


Q2™ HIGH-SPEED GROUND PLANE CONNECTORS

(0.635 mm) .025" PITCH RIGHT-ANGLE GROUND PLANE HEADERS & SOCKETS



QMS-RA
Board Mates:
QFS

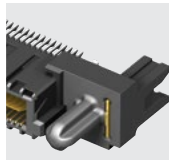


QFS-RA
Board Mates:
QMS

SERIES	PINS PER ROW NO. OF PAIRS	01	PLATING	TYPE	RA	MG	OTHER OPTION	PACKAGING
QMS Header	-026, -052, -078 -D = (52 total pins per bank)		-SL = 10 μ" (0.25 μm) Gold on Signal Pins and Ground Plane, Matte Tin on tails	-D = Single- Ended -D-DP = Differential Pair		-MG = Metal Guide Post (QMS only)	-K = Polyimide film Pick & Place Pad	Leave blank for Tray Packaging -TR = Tape & Reel (-016, -026, -032 & -052 only) -FR = Full Reel Tape & Reel (must order max. quantity per reel; contact Samtec for quantity breaks) (-016, -026, -032 & -052 only)
QFS Socket	-016, -032, -048 -D-DP = (16 pairs per bank)							

View complete specifications at: samtec.com?QMS-RA or samtec.com?QFS-RA

(0.635 mm) .025" PITCH EDGE MOUNT GROUND PLANE HEADERS & SOCKETS



QMS-EM
Board Mates:
QFS



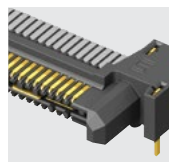
QFS-EM
Board Mates:
QMS

SERIES	POSITIONS PER ROW	01	PLATING	D	EM2	END OPTION	PACKAGING
QMS Header	-026, -052, -078		-SL = 10 μ" (0.25 μm) Gold on Signal Pins and Ground Plane, Matte Tin on tails			-PC4 = 4 Power Pins per end (QMS only)	Leave blank for Tray Packaging -TR = Tape & Reel (-026 & -052 only) -FR = Full Reel Tape & Reel (must order max. quantity per reel; contact Samtec for quantity breaks) (-026 & -052 only)
QFS Socket							

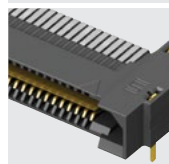
View complete specifications at: samtec.com?QMS-EM or samtec.com?QFS-EM

Q RATE® SLIM BODY HIGH-SPEED GROUND PLANE CONNECTORS

(0.80 mm) .0315" PITCH RIGHT-ANGLE SLIM BODY GROUND PLANE HEADERS & SOCKETS



QRM8-RA
Board Mates:
QRF8
(-GP Required)



QRF8-RA
Board Mates:
QRM8
(-GP Required)

SERIES	POSITIONS PER ROW	01	PLATING	RA	GP	OPTION	PACKAGING
QRM8 Header	-026, -052, -078 (52 total positions per bank)		-L = 10 μ" (0.25 μm) Gold contact, Matte Tin on tails		-GP = Guide Post (Requires -GP on mating connector)	-K = (7.00 mm) .275" DIA Polyimide film Pick & Place Pad (-052 only)	Leave blank for Tray Packaging -TR = Tape & Reel (-026, -052 only) -FR = Full Reel Tape & Reel (must order max. quantity per reel; contact Samtec for quantity breaks) (-026 & -052 only)
QRF8 Socket							

Note:
Some lengths, styles and options
are non-standard, non-returnable.

View complete specifications at: samtec.com?QRM8-RA or samtec.com?QRF8-RA

Mouser Electronics

Authorized Distributor

Click to View Pricing, Inventory, Delivery & Lifecycle Information:

[Samtec:](#)

[QFS-052-01-SL-D-RA](#) [QFS-078-02-SL-D-RA](#) [QFS-026-01-SL-D-RA](#) [QFS-078-01-SL-D-RA](#) [QFS-104-01-SL-D-RA](#)
[QFS-052-01-SL-D-RA-PC4](#) [QFS-052-01-SL-D-RA-K-TR](#) [QFS-104-01-SL-D-RA-K](#) [QFS-078-01-S-D-RA-K](#) [QFS-052-](#)
[02-SL-D-RA](#) [QFS-026-01-SL-D-RA-PC4](#) [QFS-026-01-SL-D-RA-PC4-K-TR](#) [QFS-104-02-SL-D-RA](#) [QFS-052-02-SL-D-](#)
[RA-PC4](#) [QFS-026-01-L-D-RA-PC4](#)