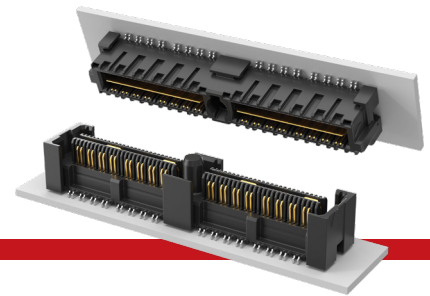




(0.635 mm) .025" PITCH • QMS/QFS SERIES

NRZ  
25  
Gbps



**QMS**  
Board Mates:  
QFS

**QFS**  
Board Mates:  
QMS

**QMS/QFS**

Cable Mates:  
6QCD

Standoffs:  
SO, JSOM

QMS	PINS PER ROW NO. OF PAIRS	LEAD STYLE	PLATING OPTION	TYPE	A	OTHER OPTION
-----	------------------------------	---------------	-------------------	------	---	-----------------

-026,  
-052, -078  
(52 total pins per  
bank = -D)

Specify  
LEAD  
STYLE  
from  
Chart

-L  
= 10 μ" (0.25 μm)  
Gold on contact,  
Matte Tin on tail  
(-05.75 & -06.75  
Lead Style Only)

-D  
= Single-Ended  
  
-D-DP  
= Differential  
Pair

-K  
= (5.50 mm)  
.217" DIA  
Polyimide film  
Pick & Place  
Pad

-016,  
-032, -048  
(16 pairs per bank  
= -D-DP)

(-078 & -048  
Not available  
with -09.75  
Lead Style)

-SL  
= 10 μ" (0.25 μm)  
Gold on contact,  
Matte Tin on tail  
(-09.75 Lead Style Only)

#### PACKAGING OPTION

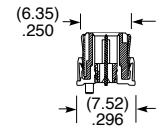
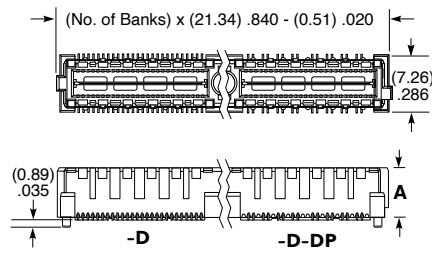
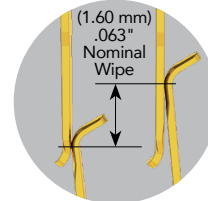
Tape & Reel  
Options  
(-TR & -FR)  
available. Visit  
series web  
page and view  
engineering prints  
for complete  
specifications.

#### SPECIFICATIONS

**Insulator Material:**  
Liquid Crystal Polymer  
**Contact & Ground  
Plane Material:**  
Phosphor Bronze  
**Plating:**  
Au over 50 μ" (1.27 μm) Ni  
(Tin on Ground Plane Tail)  
**Operating Temp Range:**  
-55 °C to +125 °C  
**Current Rating:**  
Contact:  
2.6 A per pin (2 pins powered)  
Ground Plane:  
15.7 A per ground plane  
(1 ground plane powered)  
**Voltage Rating:**  
250 VAC/ 354 VDC

MATED HEIGHT*			
QMS LEAD STYLE	A	QFS LEAD STYLE	
		-4.25	-6.25
-05.75	(5.38) .212	10 mm	12 mm
-06.75	(6.35) .250	11 mm	13 mm
-09.75	(9.35) .368	14 mm	16 mm

\*Processing conditions will affect mated height.  
See SO Series for board space tolerances.



#### PROCESSING

**Lead-Free Solderable:**  
Yes  
**QMS SMT Lead Coplanarity:**  
(0.10 mm) .004" max  
(026-052)  
(0.15 mm) .006" max (078)\*  
\*(.004" stencil solution  
may be available; contact  
ipg@samtec.com)  
**QFS SMT Lead Coplanarity:**  
(0.10 mm) .004" max  
(026-078)  
**Board Stacking:**  
For applications requiring  
more than two connectors  
contact ipg@samtec.com

View complete specifications at: [samtec.com?QMS](http://samtec.com?QMS)

QFS	PINS PER ROW NO. OF PAIRS	LEAD STYLE	PLATING OPTION	TYPE	A	OTHER OPTION
-----	------------------------------	---------------	-------------------	------	---	-----------------

-026, -052,  
-078  
(52 total pins per  
bank = -D)

Specify  
LEAD  
STYLE  
from  
Chart

-L  
= 10 μ" (0.25 μm)  
Gold on contact,  
Matte Tin on tail  
(-04.25 Lead Style only)

-D  
= Single-Ended  
  
-D-DP  
= Differential  
Pair  
(-04.25  
Lead Style  
only)

-GP  
= Guide  
Holes  
(-04.25 Lead  
Style only)

-016, -032,  
-048  
(16 pairs per bank  
= -D-DP)

-SL  
= 10 μ" (0.25 μm)  
Gold on contact,  
Matte Tin on tail  
(-06.25 Lead Style only)

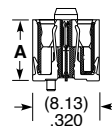
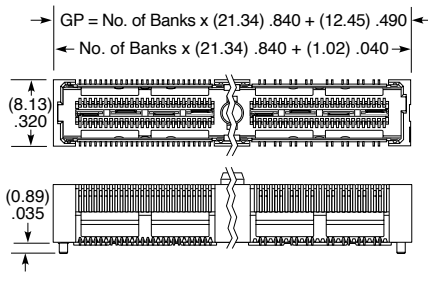
#### STANDARDS

SUMIT™  
PCI/104-Express®  
PCI/104-Express® OneBank

Visit [samtec.com/standards](http://samtec.com/standards)  
for more information,  
including mated heights and  
complete part numbers.

PCI-SIG® PCI Express® and  
the PCIe® design marks are  
registered trademarks and/or  
service marks of PCI-SIG.

**Note:**  
Some lengths, styles and  
options are non-standard,  
non-returnable.



LEAD STYLE	A
-04.25	(7.44) .293
-06.25	(9.42) .371

#### PACKAGING OPTION

Tape & Reel  
Options  
(-TR & -FR)  
available. Visit  
series web  
page and view  
engineering prints  
for complete  
specifications.

View complete specifications at: [samtec.com?QFS](http://samtec.com?QFS)

# Mouser Electronics

Authorized Distributor

Click to View Pricing, Inventory, Delivery & Lifecycle Information:

[Samtec:](#)

[QMS-016-05.75-L-D-A](#)