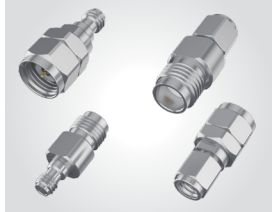


BETWEEN-SERIES PRECISION RF ADAPTORS

1.00 mm to 1.85 mm Adaptors

PRFBA



PRFBA	CONNECTOR	END 1 GENDER	CONNECTOR	END 2 GENDER	ORIENTATION
-------	-----------	--------------	-----------	--------------	-------------

-100
= 1.00 mm

-P
= Plug
-J
= Jack

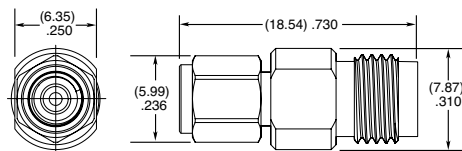
-185
= 1.85 mm

-P
= Plug
-J
= Jack

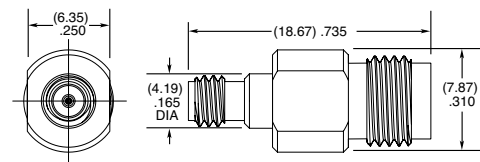
-S
= Straight

VSWR

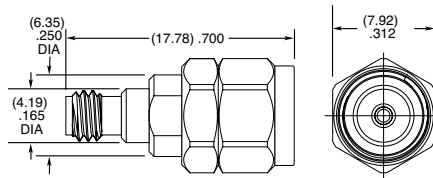
1.12 max. (DC to 26.5 GHz)
1.25 max. (26.5 GHz to 40 GHz)
1.30 max. (40 GHz to 50 GHz)
1.35 max. (50 GHz to 67 GHz)



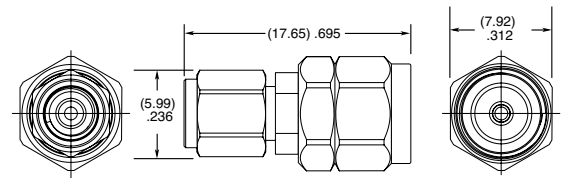
PRFBA-100-P-185-J-S



PRFBA-100-J-185-J-S



PRFBA-100-J-185-P-S



PRFBA-100-P-185-P-S

2.92 mm to SMPM Adaptors

PRFBA



VSWR

1.30 max. (DC to 40 GHz)

PRFBA	CONNECTOR	END 1 GENDER	CONNECTOR	END 2 GENDER	ORIENTATION	1
-------	-----------	--------------	-----------	--------------	-------------	---

-292
= 2.92 mm

-P
= Plug
-J
= Jack

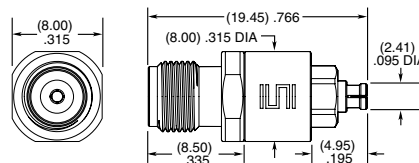
-SMPM

-J
= Jack
-PF
= Plug Full Detent

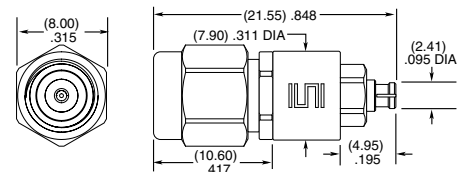
-S
= Straight

Required for Jack-to-Jack adaptor (PRFBA-292-J-SMPM-J-S-1)

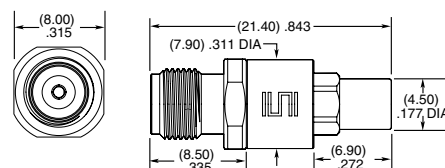
Leave blank for all other part numbers.



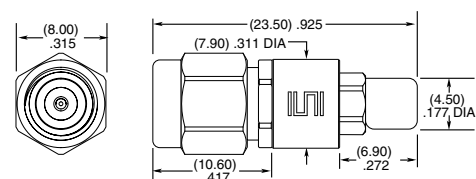
PRFBA-292-J-SMPM-J-S-1



PRFBA-292-P-SMPM-J-S



PRFBA-292-J-SMPM-PF-S



PRFBA-292-P-SMPM-PF-S

Mouser Electronics

Authorized Distributor

Click to View Pricing, Inventory, Delivery & Lifecycle Information:

[Samtec:](#)

[PRFBA-100-J-185-P-S](#) [PRFBA-100-J-185-J-S](#) [PRFBA-100-P-185-J-S](#) [PRFBA-292-P-SMA-P-S](#) [PRFBA-100-P-185-P-S](#)