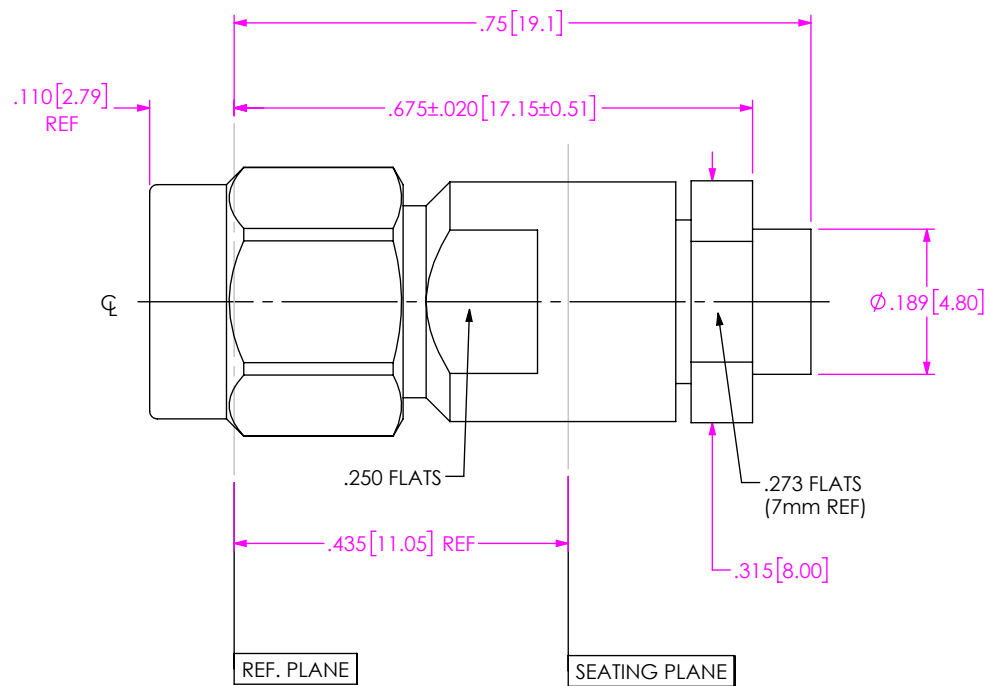


DO NOT
SCALE FROM
THIS PRINT

DESIGNED & DIMENSIONED
IN INCHES[MILLIMETERS]



PRF35-P-C-EP-402-SS

SERIES
-35: 3.5mm

GENDER
-P: PLUG

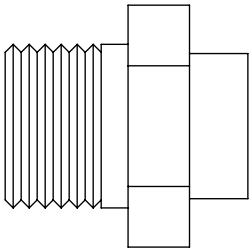
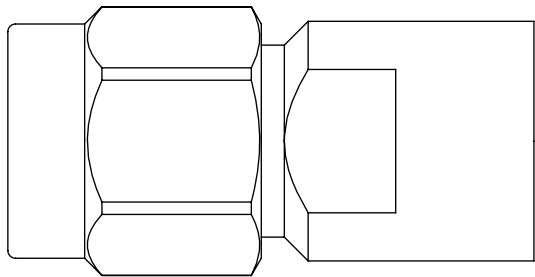
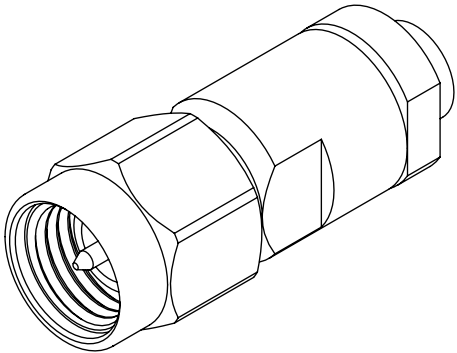
TYPE
-C: CABLE

TERMINATION
-S: SOLDER CLAMP

ORIENTATION
-S: STRAIGHT

CABLE TYPE
-402: RG-402 SEMI-RIGID

FINISH
-EP: 50μ" EXTRA HEAVY GOLD
CENTER CONTACT, PASSIVATED
OUTER CONTACT




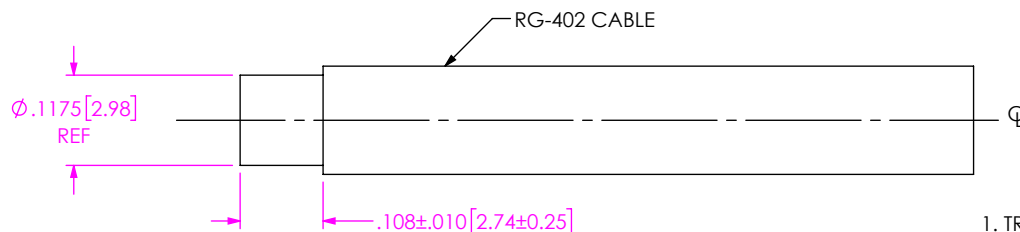
EXPLODED VIEW
NOT TO SCALE
(FOR CLARITY ONLY)

NOTES:

1. MATERIAL:
BODY, BUSHING, COUPLING NUT: STAINLESS STEEL
CONTACT, LOCK RING: BERYLLIUM COPPER
CLAMP NUT: BRASS ALLOY
BEAD: PCTFE
GASKET: SILICONE RUBBER
2. FINISH:
BODY, BUSHING, COUPLING NUT: PASSIVATED
CONTACT, CLAMP NUT: 50μ" MIN. GOLD OVER 50μ" MIN. NICKEL PLATE
3. PCI P/N: 3774

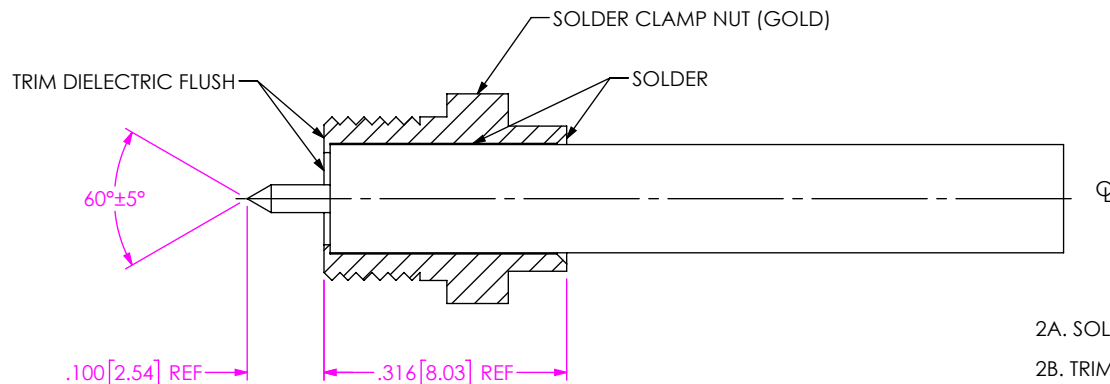
F:\DWG\MISC\MKTG\PRF35-P-C-EP-402-SS-MKT.SLDDRW

UNLESS OTHERWISE SPECIFIED, DIMENSIONS ARE IN INCHES. TOLERANCES ARE: DECIMALS ANGLES .XX: ±.01[0.3] 1° .XXX: ±.005[0.13] .XXXX: ±.0005[0.013]	<p>PROPRIETARY NOTE</p> <p>THIS DOCUMENT CONTAINS CONFIDENTIAL AND PROPRIETARY INFORMATION AND ALL DESIGN, MANUFACTURING, REPRODUCTION, USE, PATENT RIGHTS AND SALES RIGHTS ARE EXPRESSLY RESERVED BY SAMTEC, INC. THIS DOCUMENT SHALL NOT BE DISCLOSED, IN WHOLE OR PART, TO ANY UNAUTHORIZED PERSON OR ENTITY NOR REPRODUCED, TRANSFERRED OR INCORPORATED IN ANY OTHER PROJECT IN ANY MANNER WITHOUT THE EXPRESS WRITTEN CONSENT OF SAMTEC, INC.</p>	 520 PARK EAST BLVD, NEW ALBANY, IN 47150 PHONE: 812-944-6733 FAX: 812-948-5047 e-Mail: info@SAMTEC.com code 55322
DO NOT SCALE DRAWING	SHEET SCALE: 4:1	DESCRIPTION: 3.5 MM PLUG SOLDER CLAMP NUT FOR RG-402 SEMI-RIGID CABLE
		DWG. NO. PRF35-P-C-EP-402-SS
BY: SAMUEL C 04/08/2019		SHEET 1 OF 2



IN-PROCESS VIEW 1

1. TRIM CABLE JACKET TO EXPOSE DIELECTRIC CORE AS SHOWN.

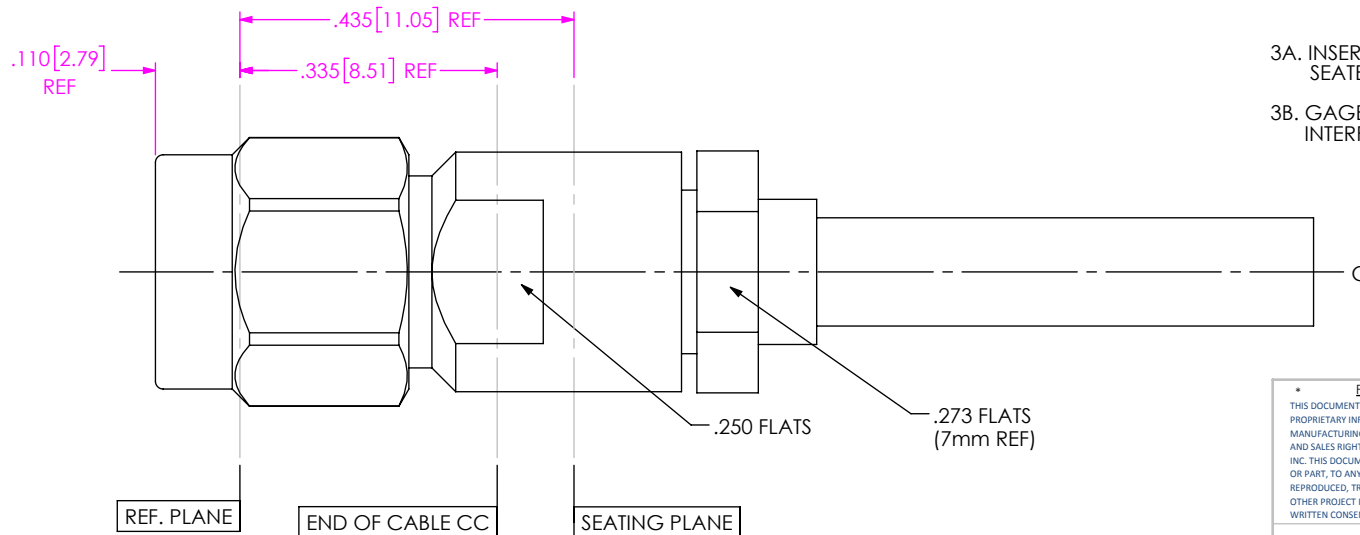


IN-PROCESS VIEW 2

2A. SOLDER CLAMP NUT TO CABLE AS SHOWN.

2B. TRIM CABLE DIELECTRIC FLUSH WITH FACE OF CLAMP NUT AS SHOWN.

2C. POINT CABLE CENTER CONDUCTOR AS SHOWN.



3A. INSERT CABLE SUB-ASSEMBLY INTO CONNECTOR UNTIL SEATED AND TORQUE TO 25-30 IN-LBS.

3B. GAGE CONTACT RECESSON FROM CONNECTOR INTERFACE. (.000/.003 SUB-FLUSH).

DISTANCE FROM END OF
CABLE CENTER CONDUCTOR
TO REF PLANE IS .335 REF

IN-PROCESS VIEW 3

• PROPRIETARY NOTE •

THIS DOCUMENT CONTAINS CONFIDENTIAL AND PROPRIETARY INFORMATION AND ALL DESIGN, MANUFACTURING, REPRODUCTION, USE, PATENT RIGHTS AND SALES RIGHTS ARE EXPRESSLY RESERVED BY SAMTEC, INC. THIS DOCUMENT SHALL NOT BE DISCLOSED, IN WHOLE OR PART, TO ANY UNAUTHORIZED PERSON OR ENTITY NOR REPRODUCED, TRANSFERRED OR INCORPORATED IN ANY OTHER PROJECT IN ANY MANNER WITHOUT THE EXPRESS WRITTEN CONSENT OF SAMTEC, INC.

DO NOT SCALE DRAWING

SHEET SCALE: 4:1

samtec

520 PARK EAST BLVD, NEW ALBANY, IN 47150
PHONE: 812-944-6733 FAX: 812-948-5047
e-Mail: info@SAMTEC.com code 55322

DESCRIPTION: 3.5 MM PLUG SOLDER CLAMP NUT
FOR RG-402 SEMI-RIGID CABLE

DWG. NO.

PRF35-P-C-EP-402-SS

BY: SAMUEL C 04/08/2019 SHEET 2 OF 2

Mouser Electronics

Authorized Distributor

Click to View Pricing, Inventory, Delivery & Lifecycle Information:

[Samtec:](#)

[PRF35-P-C-EP-402-SS](#)