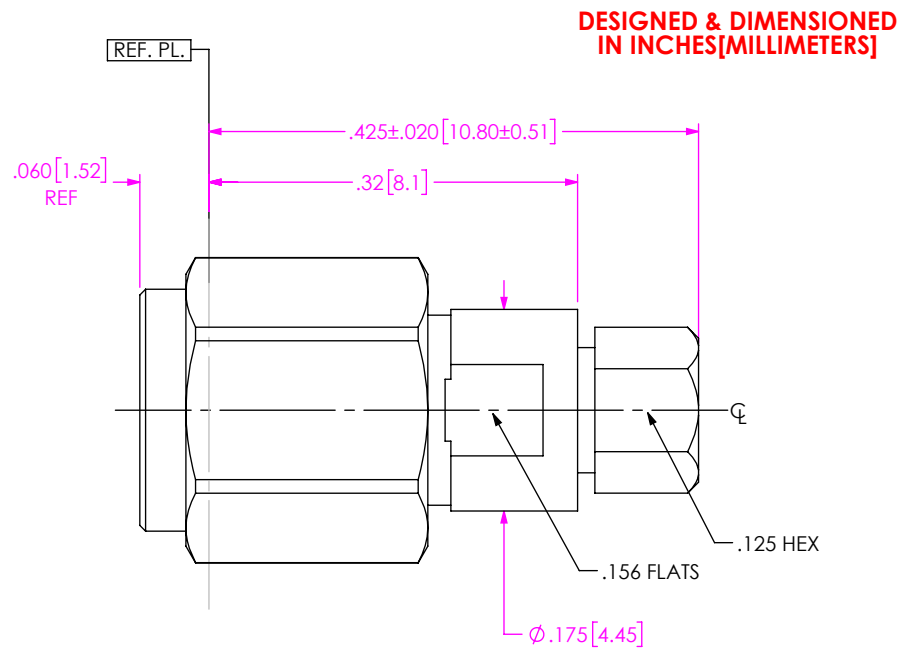
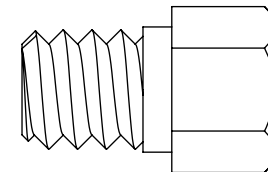
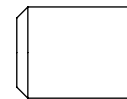
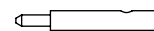
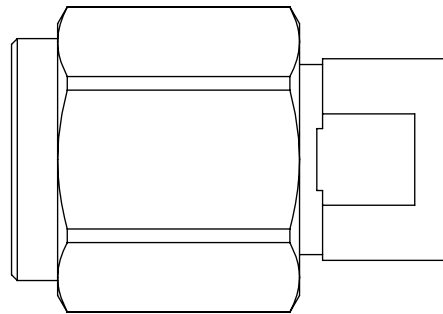
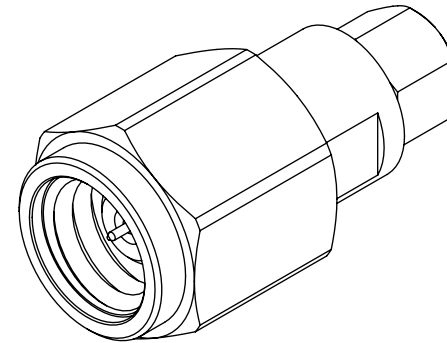


DO NOT  
SCALE FROM  
THIS PRINT

PRF10-P-C-VP-047D-SS-X

SERIES  
-10: 1.0 MMGENDER  
-P: PLUGTYPE  
-C: CABLE

PLATING

-VP: 50 $\mu$ "-75 $\mu$ " PRECISION GOLD  
CENTER CONTACT,  
PASSIVATED OUTER CONTACTPACKAGING  
-B: BULK (IN INCREMENTS OF 50)  
(BLANK): STANDARD  
PACKAGINGTERMINATION  
-S: SOLDER CLAMPORIENTATION  
-S: STRAIGHTCABLE TYPE  
-047D: .047" SEMI-RIGID CABLEEXPLODED VIEW  
NOT TO SCALE  
(FOR CLARITY ONLY)

## NOTES:

## 1. MATERIALS:

BODY, CLAMP NUT, COUPLING NUT: STAINLESS STEEL  
CONTACT, SNAP RING: BERYLLIUM COPPER  
SOLDER FERRULE: BRASS ALLOY  
GASKET: SILICONE RUBBER

## 2. FINISH:

BODY, CLAMP NUT, COUPLING NUT: PASSIVATED  
CONTACT: 50 $\mu$ "-75 $\mu$ " GOLD OVER 50 $\mu$ "-75 $\mu$ " NICKEL PLATE  
SOLDER FERRULE: 50 $\mu$ " GOLD OVER 50 $\mu$ " NICKEL PLATE

## 3. PCI P/N: 3632

## 4. BULK PACKAGING OPTION (-B) FOR ORDERS IN INCREMENTS OF 50 PCS.

F:\DWG\MISC\Mktg\PRF10-P-C-VP-047D-SS-X-MKT.SLDDRW

UNLESS OTHERWISE SPECIFIED,  
DIMENSIONS ARE IN INCHES.  
TOLERANCES ARE:DECIMALS ANGLES  
.XX:  $\pm .01$  [0.3] 1°  
.XXX:  $\pm .005$  [0.13]  
.XXXX:  $\pm .0005$  [0.013]\* PROPRIETARY NOTE \*  
THIS DOCUMENT CONTAINS CONFIDENTIAL AND  
PROPRIETARY INFORMATION AND ALL DESIGN,  
MANUFACTURING, REPRODUCTION, USE, PATENT RIGHTS  
AND SALES RIGHTS ARE EXPRESSLY RESERVED BY SAMTEC,  
INC. THIS DOCUMENT SHALL NOT BE DISCLOSED, IN WHOLE  
OR PART, TO ANY UNAUTHORIZED PERSON OR ENTITY NOR  
REPRODUCED, TRANSFERRED OR INCORPORATED IN ANY  
OTHER PROJECT IN ANY MANNER WITHOUT THE EXPRESS  
WRITTEN CONSENT OF SAMTEC, INC.**samtec**520 PARK EAST BLVD, NEW ALBANY, IN 47150  
PHONE: 812-944-6733 FAX: 812-948-5047  
e-Mail: info@SAMTEC.com code 55322

DO NOT SCALE DRAWING

SHEET SCALE: 6:1

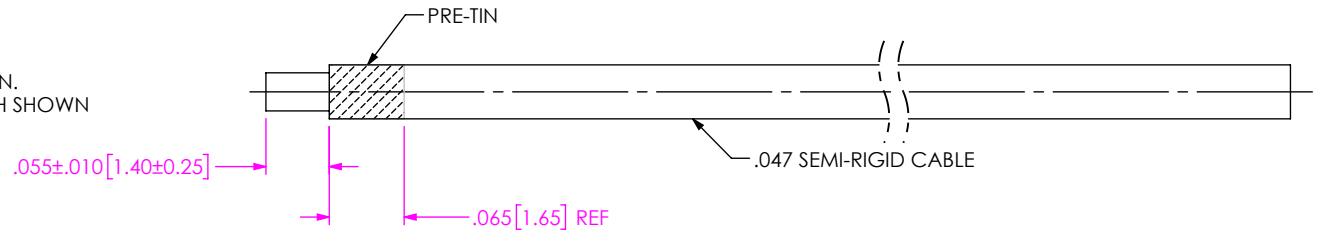
DESCRIPTION: 1.0MM PLUG, SOLDER CLAMP  
FOR .047" SEMI-RIGID CABLE

DWG. NO.

PRF10-P-C-VP-047D-SS-X

BY: HENSON T 04/04/2019 SHEET 1 OF 2

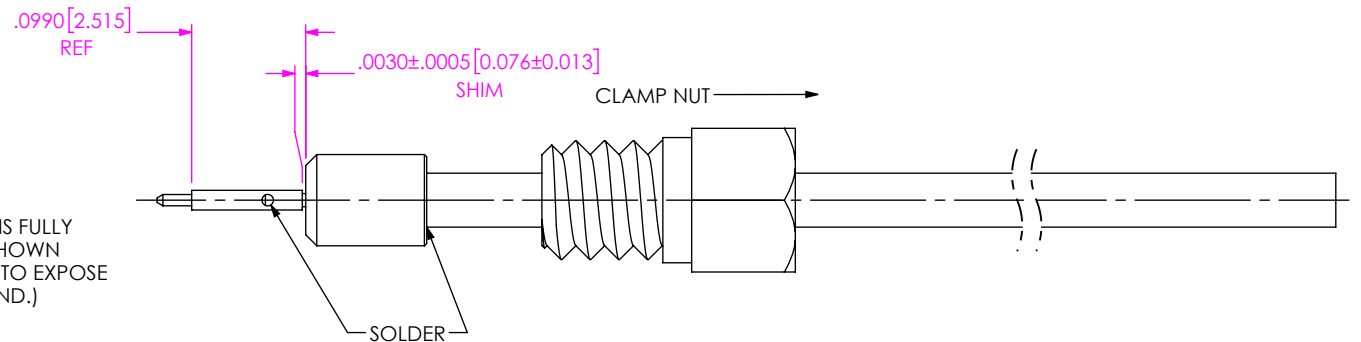
1. TRIM CABLE TO EXPOSE CENTER DIELECTRIC AS SHOWN.  
2. PRE-TIN CABLE OUTER JACKET OVER APPROX. LENGTH SHOWN



IN-PROCESS VIEW 1

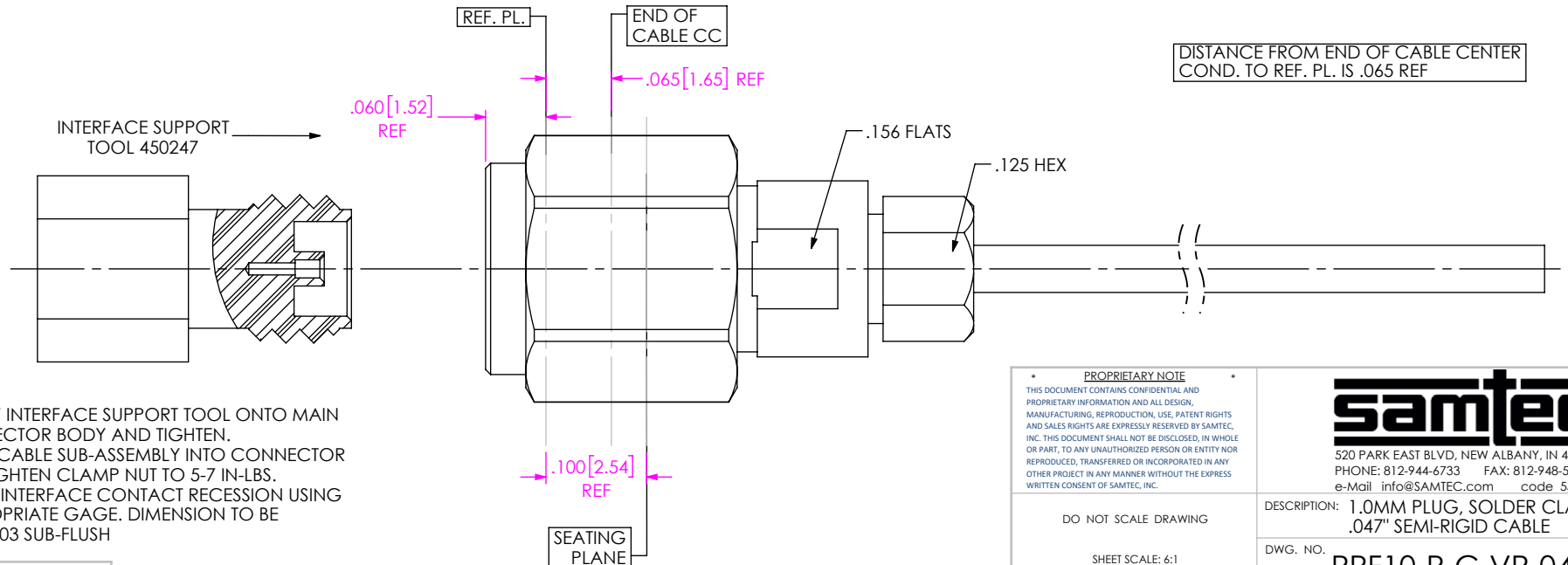
SLIGHT PRESS FIT BETWEEN CABLE DIELECTRIC AND SOLDER FERRULE.

- 2A: SLIDE CLAMP NUT ONTO CABLE AS SHOWN.  
2B: INSTALL CABLE INTO SOLDER FERRULE UNTIL CABLE IS FULLY SEATED. THEN SOLDER CABLE TO FERRULE WHERE SHOWN  
2C: TRIM DIELECTRIC CORE FLUSH TO SOLDER FERRULE TO EXPOSE CONDUCTOR (NOTE: DO NOT SCORE CENTER COND.)  
2D: SOLDER CONTACT WITH GAP SHOWN USING SHIM.



IN-PROCESS VIEW 2

DISTANCE FROM END OF CABLE CENTER COND. TO REF. PL. IS  $.065$  REF



- 3A: SCREW INTERFACE SUPPORT TOOL ONTO MAIN CONNECTOR BODY AND TIGHTEN.  
3B: INSERT CABLE SUB-ASSEMBLY INTO CONNECTOR AND TIGHTEN CLAMP NUT TO 5-7 IN-LBS.  
3C: GAGE INTERFACE CONTACT RECESSON USING APPROPRIATE GAGE. DIMENSION TO BE  $.000/.003$  SUB-FLUSH

IN-PROCESS VIEW 3

**PROPRIETARY NOTE**  
THIS DOCUMENT CONTAINS CONFIDENTIAL AND PROPRIETARY INFORMATION AND ALL DESIGN, MANUFACTURING, REPRODUCTION, USE, PATENT RIGHTS AND SALES RIGHTS ARE EXPRESSLY RESERVED BY SAMTEC, INC. THIS DOCUMENT SHALL NOT BE DISCLOSED, IN WHOLE OR PART, TO ANY UNAUTHORIZED PERSON OR ENTITY NOR REPRODUCED, TRANSFERRED OR INCORPORATED IN ANY OTHER PROJECT IN ANY MANNER WITHOUT THE EXPRESS WRITTEN CONSENT OF SAMTEC, INC.

DO NOT SCALE DRAWING

SHEET SCALE: 6:1

**samtec**

520 PARK EAST BLVD, NEW ALBANY, IN 47150  
PHONE: 812-944-6733 FAX: 812-948-5047  
e-Mail: info@SAMTEC.com code 55322

DESCRIPTION: 1.0MM PLUG, SOLDER CLAMP FOR .047" SEMI-RIGID CABLE

DWG. NO. PRF10-P-C-VP-047D-SS-X

BY: HENSON T 04/04/2019 SHEET 2 OF 2

# Mouser Electronics

Authorized Distributor

Click to View Pricing, Inventory, Delivery & Lifecycle Information:

[Samtec:](#)

[PRF10-P-C-VP-047D-SS](#)