

DO NOT
SCALE FROM
THIS PRINTDESIGNED & DIMENSIONED
IN INCHES[MILLIMETERS]

PRF10-J-C-VP-047D-SS-X

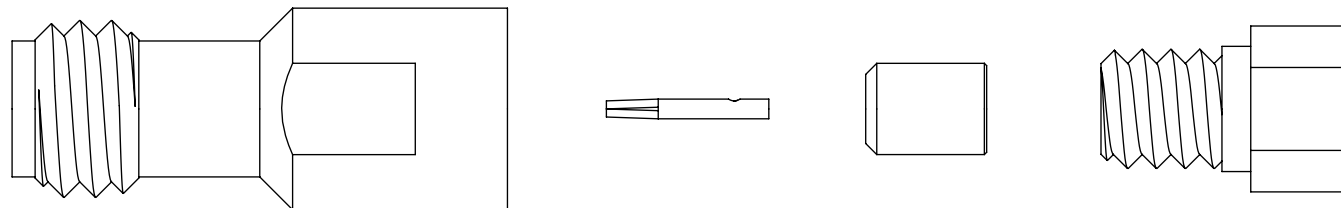
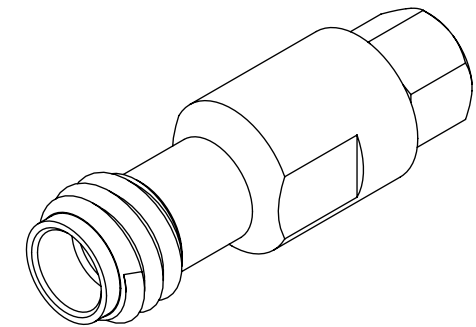
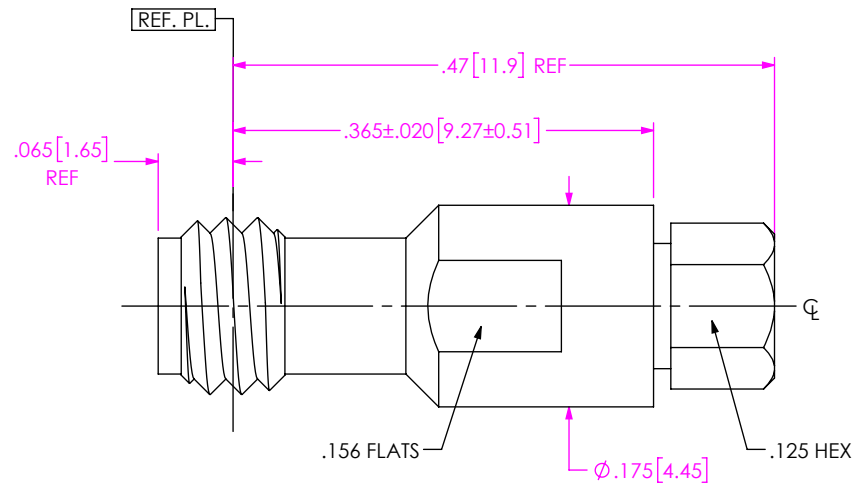
SERIES
-10: 1.0 MM
GENDER
-J: JACK
TYPE
-C: CABLE

PLATING
-VP: 50 μ "-75 μ " PRECISION GOLD
CENTER CONTACT,
PASSIVATED OUTER CONTACT

PACKAGING
-B: BULK (IN INCREMENTS OF 50)
(BLANK): STANDARD
PACKAGING

TERMINATION
-S: SOLDER CLAMP
ORIENTATION
-S: STRAIGHT

CABLE TYPE
-047D: .047" SEMI-RIGID CABLE



EXPLODED VIEW
NOT TO SCALE
(FOR CLARITY ONLY)

NOTES:

1. MATERIALS:
BODY, CLAMP NUT: STAINLESS STEEL
CONTACT: BERYLLIUM COPPER
SOLDER FERRULE: BRASS ALLOY
2. FINISH:
BODY, CLAMP NUT: PASSIVATED
CONTACT: 50 μ "-75 μ " GOLD OVER 50 μ "-75 μ " NICKEL PLATE
SOLDER FERRULE: 50 μ " GOLD OVER 50 μ " NICKEL PLATE
3. PCI P/N: 3633.
4. BULK PACKAGING OPTION (-B) FOR ORDERS IN INCREMENTS OF 50 PCS.

F:\DWG\MISC\Mktg\PRF10-J-C-VP-047D-SS-X-MKT.SLDDRW

UNLESS OTHERWISE SPECIFIED,
DIMENSIONS ARE IN INCHES.
TOLERANCES ARE:

DECIMALS ANGLES
.XX: ±.01 [0.3] 1°
.XXX: ±.005 [0.13]
.XXXX: ±.0005 [0.013]

PROPRIETARY NOTE
THIS DOCUMENT CONTAINS CONFIDENTIAL AND
PROPRIETARY INFORMATION AND ALL DESIGN,
MANUFACTURING, REPRODUCTION, USE, PATENT RIGHTS
AND SALES RIGHTS ARE EXPRESSLY RESERVED BY SAMTEC,
INC. THIS DOCUMENT SHALL NOT BE DISCLOSED, IN WHOLE
OR PART, TO ANY UNAUTHORIZED PERSON OR ENTITY NOR
REPRODUCED, TRANSFERRED OR INCORPORATED IN ANY
OTHER PROJECT IN ANY MANNER WITHOUT THE EXPRESS
WRITTEN CONSENT OF SAMTEC, INC.

samtec

520 PARK EAST BLVD, NEW ALBANY, IN 47150
PHONE: 812-944-6733 FAX: 812-948-5047
e-Mail: info@SAMTEC.com code 55322

DO NOT SCALE DRAWING

SHEET SCALE: 6:1

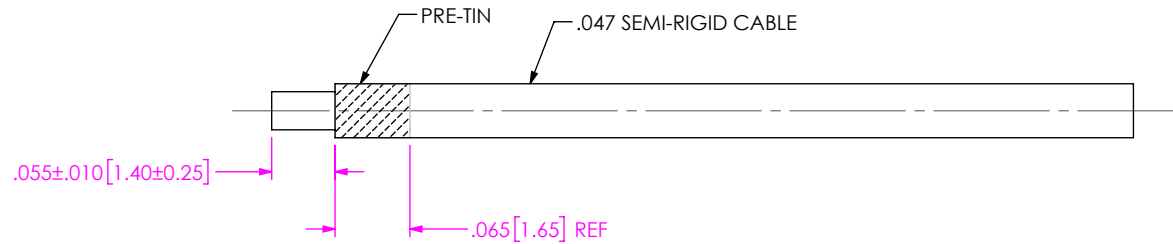
DESCRIPTION: 1.0MM JACK, SOLDER CLAMP
FOR .047" SEMI-RIGID CABLE

DWG. NO.

PRF10-J-C-VP-047D-SS-X

BY: HENSON T 04/06/2019 SHEET 1 OF 2

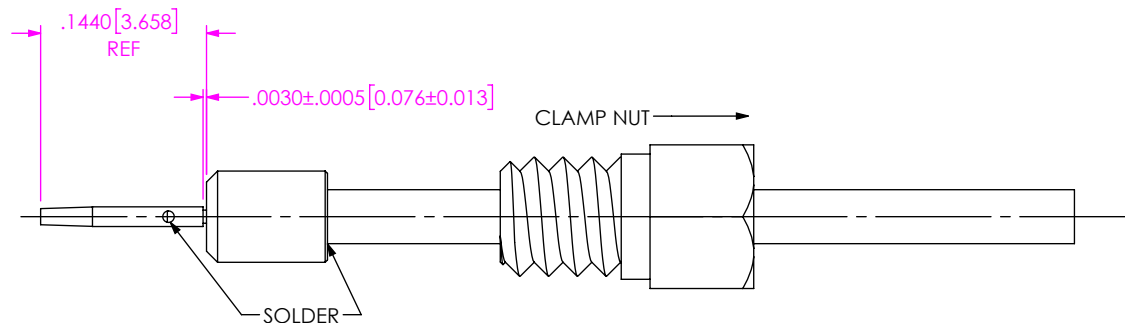
1. TRIM CABLE TO EXPOSE CENTER DIELECTRIC AS SHOWN.
2. PRE-TIN CABLE OUTER JACKET OVER APPROX. LENGTH SHOWN



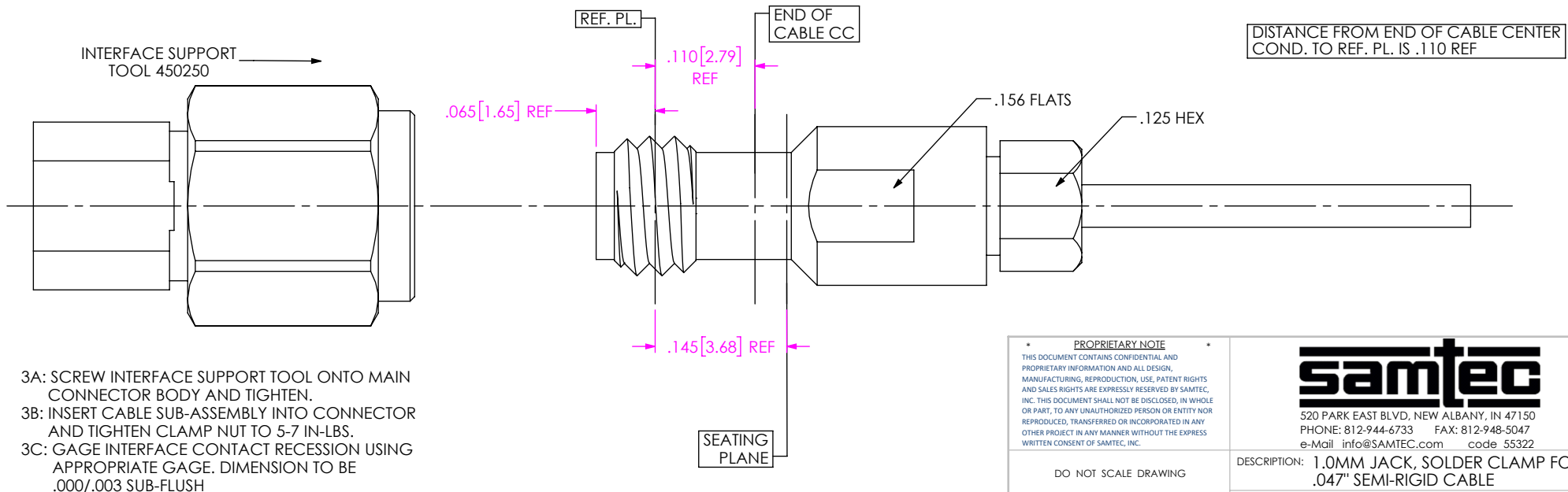
IN-PROCESS VIEW 1

- 2A: SLIDE CLAMP NUT ONTO CABLE AS SHOWN.
- 2B: INSTALL CABLE INTO SOLDER FERRULE UNTIL CABLE IS FULLY SEATED. THEN SOLDER CABLE TO FERRULE WHERE SHOWN
- 2C: TRIM DIELECTRIC CORE FLUSH TO SOLDER FERRULE TO EXPOSE CONDUCTOR (NOTE: DO NOT SCORE CENTER COND.)
- 2D: SOLDER CONTACT WITH GAP SHOWN USING SHIM.

SLIGHT PRESS FIT BETWEEN CABLE DIELECTRIC AND SOLDER FERRULE.



IN-PROCESS VIEW 2



- 3A: SCREW INTERFACE SUPPORT TOOL ONTO MAIN CONNECTOR BODY AND TIGHTEN.
- 3B: INSERT CABLE SUB-ASSEMBLY INTO CONNECTOR AND TIGHTEN CLAMP NUT TO 5-7 IN-LBS.
- 3C: GAGE INTERFACE CONTACT RECESSON USING APPROPRIATE GAGE. DIMENSION TO BE .000/.003 SUB-FLUSH

IN-PROCESS VIEW 3

PROPRIETARY NOTE
THIS DOCUMENT CONTAINS CONFIDENTIAL AND PROPRIETARY INFORMATION AND ALL DESIGN, MANUFACTURING, REPRODUCTION, USE, PATENT RIGHTS AND SALES RIGHTS ARE EXPRESSLY RESERVED BY SAMTEC, INC. THIS DOCUMENT SHALL NOT BE DISCLOSED, IN WHOLE OR PART, TO ANY UNAUTHORIZED PERSON OR ENTITY NOR REPRODUCED, TRANSFERRED OR INCORPORATED IN ANY OTHER PROJECT IN ANY MANNER WITHOUT THE EXPRESS WRITTEN CONSENT OF SAMTEC, INC.

DO NOT SCALE DRAWING

SHEET SCALE: 6:1

samtec

520 PARK EAST BLVD, NEW ALBANY, IN 47150
PHONE: 812-944-6733 FAX: 812-948-5047
e-Mail: info@SAMTEC.com code 55322

DESCRIPTION: 1.0MM JACK, SOLDER CLAMP FOR .047" SEMI-RIGID CABLE

DWG. NO.

PRF10-J-C-VP-047D-SS-X

BY: HENSON T 04/06/2019 SHEET 2 OF 2

Mouser Electronics

Authorized Distributor

Click to View Pricing, Inventory, Delivery & Lifecycle Information:

[Samtec:](#)

[PRF10-J-C-VP-047D-SS](#)