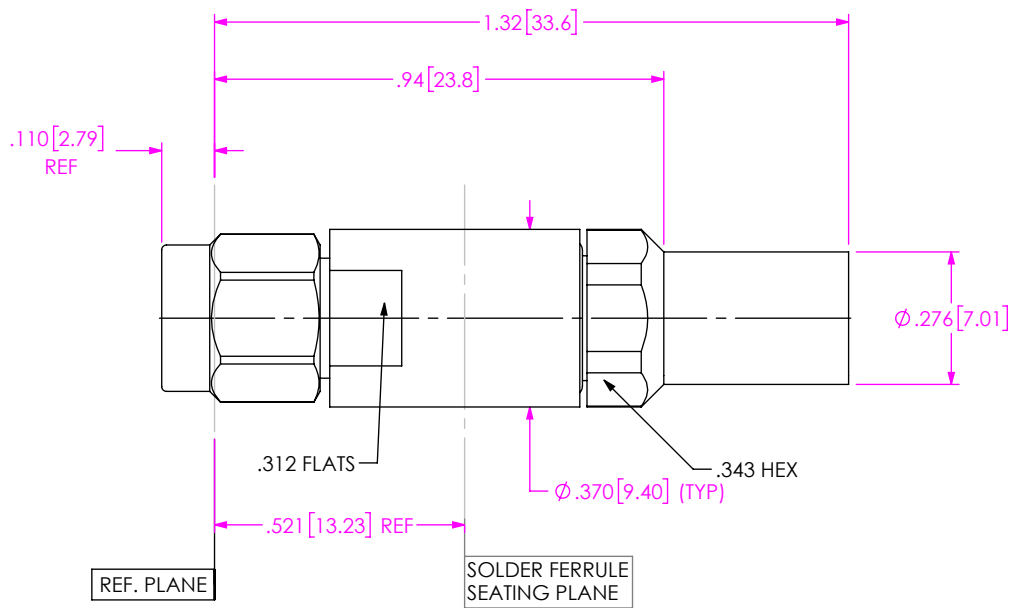


DO NOT  
SCALE FROM  
THIS PRINT

DESIGNED & DIMENSIONED  
IN INCHES[MILLIMETERS]



PRF01-P-C-EP-142-SS

SERIES  
-01: SMA

GENDER  
-P: PLUG

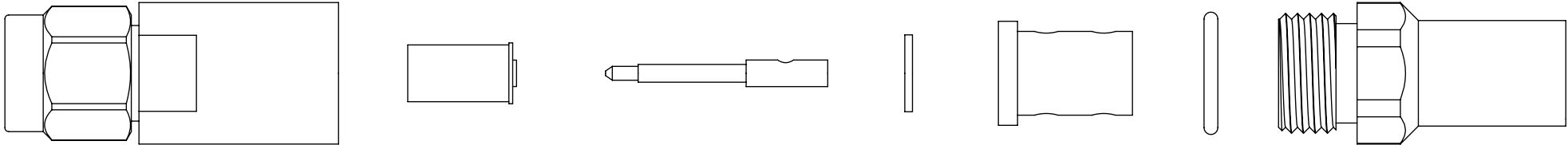
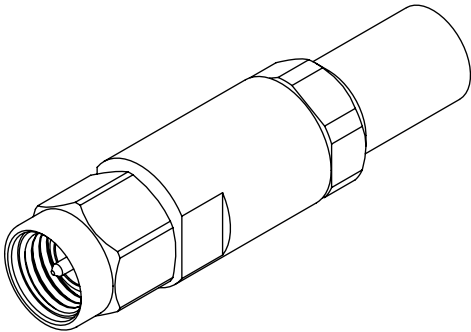
TYPE  
-C: CABLE

TERMINATION  
-S: SOLDER CLAMP

ORIENTATION  
-S: STRAIGHT

CABLE TYPE  
-142: HARBOUR LL142

FINISH  
-EP: 50 $\mu$ " EXTRA HEAVY GOLD  
CENTER CONTACT,  
PASSIVATED OUTER CONTACT



EXPLODED VIEW  
NOT TO SCALE  
(FOR CLARITY ONLY)

NOTES:

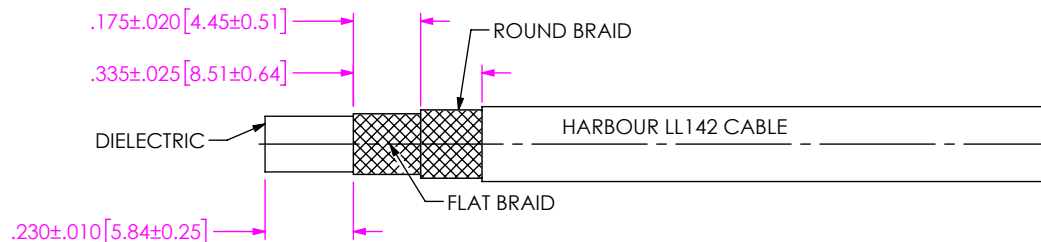
1. MATERIAL:  
BODY, COUPLING NUT, CLAMP NUT: STAINLESS STEEL  
CONTACT, LOCK RING: BERYLLIUM COPPER  
SOLDER FERRULE: BRASS ALLOY  
INSULATOR: PTFE  
BEADS: PEI  
O-RING, GASKET: SILICONE RUBBER
2. FINISH:  
BODY, COUPLING NUT, CLAMP NUT: PASSIVATED  
CONTACT, SOLDER FERRULE: 50 $\mu$ " MIN. GOLD OVER 50 $\mu$ " MIN. NICKEL PLATE
3. PERFORMANCE:  
IMPEDANCE: 50  $\Omega$   
FREQUENCY: DC TO 18 GHz  
VSWR: 1.14:1 MAXIMUM  
INSERTION LOSS: 0.03 x  $\sqrt{f}$ (GHz)  
DWV: 1700 Vrms
4. PCI P/N: 3163.

F:\DWG\MISC\MKTG\PRF01-P-C-EP-142-SS-MKT.SLDDRW

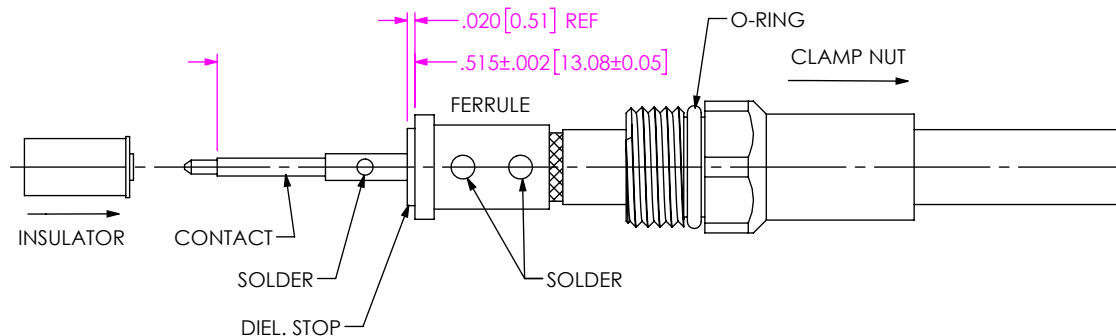
UNLESS OTHERWISE SPECIFIED, DIMENSIONS ARE IN INCHES. TOLERANCES ARE: DECIMALS ANGLES .XX: $\pm .01$ [0.3] .XXX: $\pm .005$ [0.13] .XXXX: $\pm .0005$ [0.013]	<b>PROPRIETARY NOTE</b> THIS DOCUMENT CONTAINS CONFIDENTIAL AND PROPRIETARY INFORMATION AND ALL DESIGN, MANUFACTURING, REPRODUCTION, USE, PATENT RIGHTS AND SALES RIGHTS ARE EXPRESSLY RESERVED BY SAMTEC, INC. THIS DOCUMENT SHALL NOT BE DISCLOSED, IN WHOLE OR PART, TO ANY UNAUTHORIZED PERSON OR ENTITY NOR REPRODUCED, TRANSFERRED OR INCORPORATED IN ANY OTHER PROJECT IN ANY MANNER WITHOUT THE EXPRESS WRITTEN CONSENT OF SAMTEC, INC.	 520 PARK EAST BLVD, NEW ALBANY, IN 47150 PHONE: 812-944-6733 FAX: 812-948-5047 e-Mail info@SAMTEC.com code 55322
DO NOT SCALE DRAWING	SHEET SCALE: 2.5:1	DESCRIPTION: SMA PLUG, SOLDER CLAMP FOR HARBOUR LL142 CABLE
		DWG. NO. PRF01-P-C-EP-142-SS
BY: SHERRY W 2/3/2019		SHEET 1 OF 2

THIS P/N WAS 1-001-2851-0

1. STRIP CABLE AS SHOWN.



IN-PROCESS VIEW 1

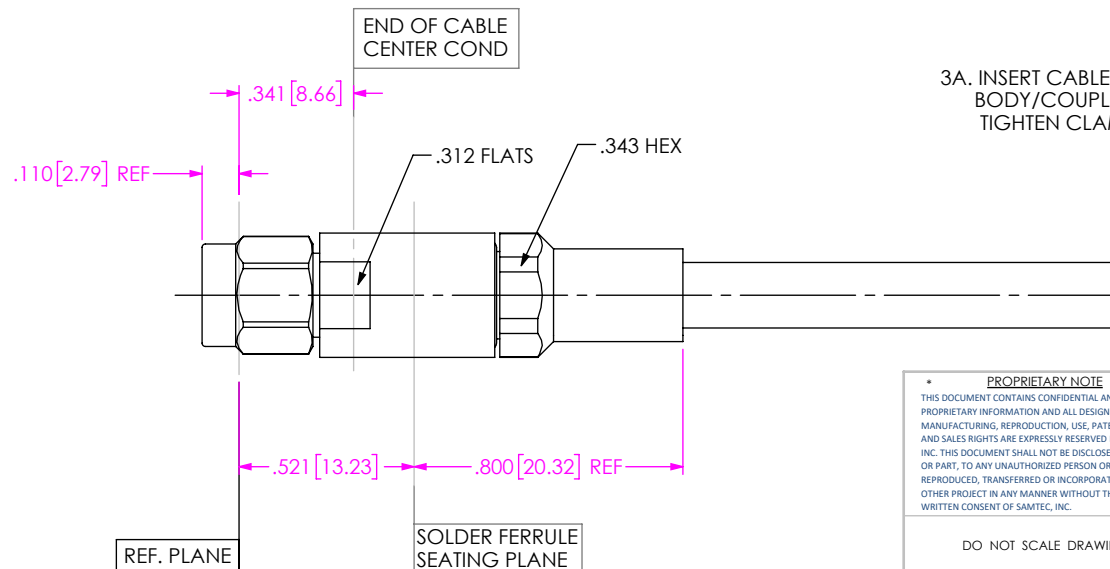


- 2A. SLIDE CLAMP NUT OVER CABLE IN ORIENTATION SHOWN.  
 2B. INSERT CABLE INTO SOLDER FERRULE UNTIL INNER  
 BRAID SEATS AND SOLDER TO BRAIDS WHERE SHOWN  
 2C. TRIM CABLE DIELECTRIC FLUSH WITH FACE OF FERRULE.

- 2D. SLIDE DIELECTRIC STOP OVER CABLE  
 CENTER CONDUCTOR AND SOLDER CONTACT  
 FLUSH TO STOP TO DIMENSION SHOWN.  
 2E. SLIDE INSULATION ONTO CONTACT AGAINST  
 SHOULDER.

IN-PROCESS VIEW 2

DISTANCE FROM END OF  
 CABLE CENTER CONDUCTOR  
 TO REF. PL. IS .341 REF



- 3A. INSERT CABLE/CONTACT SUB-ASSEMBLY INTO  
 BODY/COUPLIN NUT ASSEMBLY UNTIL SEATED AND  
 TIGHTEN CLAMP NUT TO 25-35 IN-LBS.

IN-PROCESS VIEW 3

**PROPRIETARY NOTE**  
 THIS DOCUMENT CONTAINS CONFIDENTIAL AND  
 PROPRIETARY INFORMATION AND ALL DESIGN,  
 MANUFACTURING, REPRODUCTION, USE, PATENT RIGHTS  
 AND SALES RIGHTS ARE EXPRESSLY RESERVED BY SAMTEC,  
 INC. THIS DOCUMENT SHALL NOT BE DISCLOSED, IN WHOLE  
 OR PART, TO ANY UNAUTHORIZED PERSON OR ENTITY NOR  
 REPRODUCED, TRANSFERRED OR INCORPORATED IN ANY  
 OTHER PROJECT IN ANY MANNER WITHOUT THE EXPRESS  
 WRITTEN CONSENT OF SAMTEC, INC.

DO NOT SCALE DRAWING

SHEET SCALE: 2:1

**samtec**

520 PARK EAST BLVD, NEW ALBANY, IN 47150  
 PHONE: 812-944-6733 FAX: 812-948-5047  
 e-Mail: info@SAMTEC.com code 55322

DESCRIPTION: SMA PLUG, SOLDER CLAMP FOR  
 HARBOUR LL142 CABLE

DWG. NO. **PRF01-P-C-EP-142-SS**

BY: SHERRY W 2/3/2019

SHEET 2 OF 2

# Mouser Electronics

Authorized Distributor

Click to View Pricing, Inventory, Delivery & Lifecycle Information:

[Samtec:](#)

[PRF01-P-C-EP-142-SS](#)