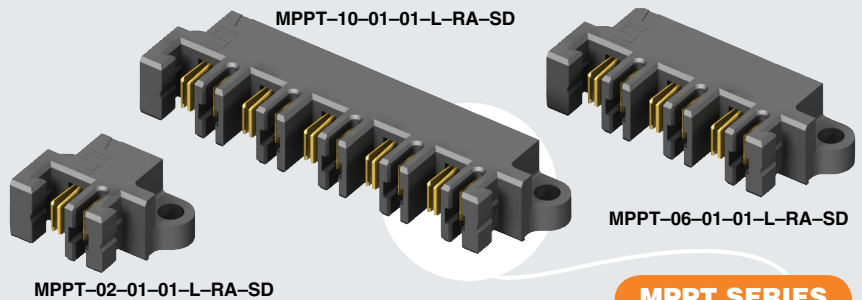


(5.00 mm) .1969"

**MPPT SERIES**

# HERMAPHRODITIC 30 A POWER SYSTEM

## SPECIFICATIONS

For complete specifications see [www.samtec.com?MPPT](http://www.samtec.com?MPPT)

### Insulator Material:

Black LCP

### Terminal Material:

Copper Alloy

### Plating:

Sn or Au over 50  $\mu$ "

(1.27  $\mu$ m) Ni

### Operating Temp Range:

-55 °C to +105 °C with Tin;

-55 °C to +125 °C with Gold

### Voltage Rating:

600 VAC/848 VDC

### Standard Creepage:

(2.95 mm) .116"

### Standard Clearance:

(2.71 mm) .106"

### RoHS Compliant:

Yes

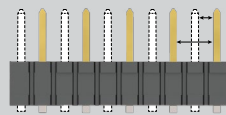
### Lead-Free Solderable:

Yes

Mates with:

MPPT

## CREEPAGE AND CLEARANCE



Selectively loading contacts achieves customer specific creepage and clearance requirements.

Contact [asp@samtec.com](mailto:asp@samtec.com)

Dual leaf contacts

Screw down option

Dual blade post

## RECOGNITIONS

For complete scope of recognitions see [www.samtec.com/quality](http://www.samtec.com/quality)

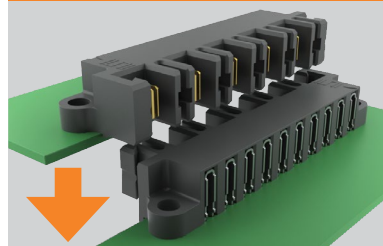


MPPT/MPPT	
POWER PINS	CURRENT RATING (PER CONTACT)
1	23.3 A
2	20.5 A
3	19.4 A
4	18.4 A
10	17.2 A

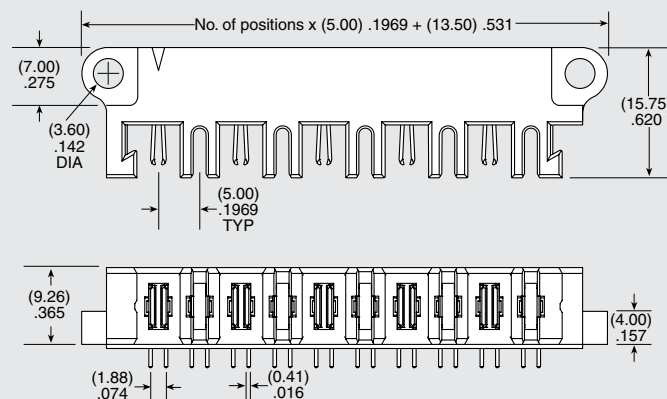
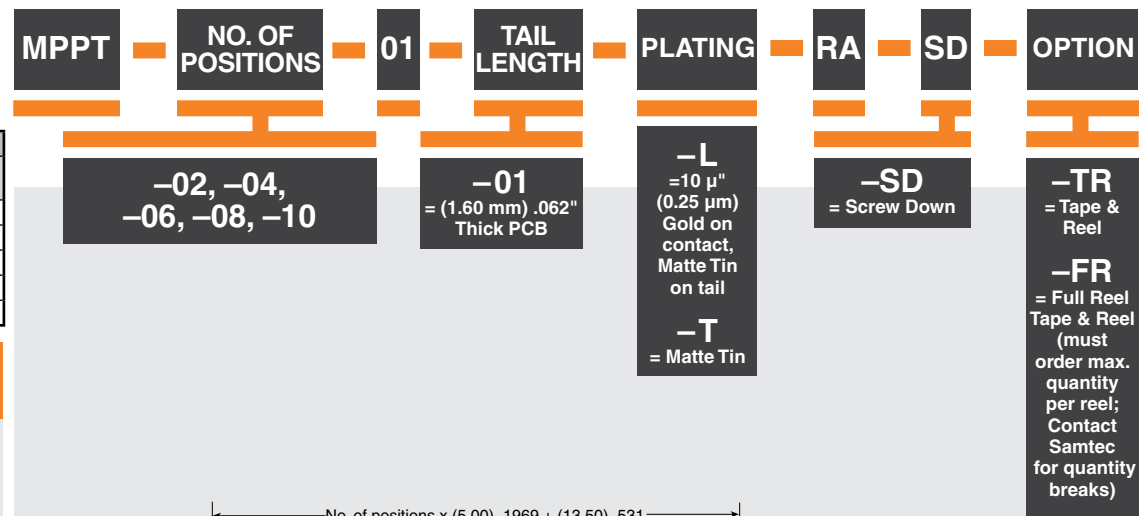
## ALSO AVAILABLE (MOQ Required)

- Locking Clip (Manual placement required)
- Solder Leads for (2.36 mm) .093" thick board

## APPLICATION



**Note:**  
Some sizes, styles and options are non-standard, non-returnable.



# Mouser Electronics

Authorized Distributor

Click to View Pricing, Inventory, Delivery & Lifecycle Information:

Samtec:

[MPPT-02-01-01-T-RA-SD](#) [MPPT-08-01-02-L-RA-SD-TR](#) [MPPT-10-01-02-L-RA-SD](#)