



MMCX-J-P-HF-SW-EM1



MMCX-J-P-HF-SW-EM1

MMCX-SW SERIES

50 Ω MMCX SWITCHABLE JACK

SPECIFICATIONS

For complete specifications and recommended PCB layouts see www.samtec.com?MMCX-SW

Contact Material:

BeCu

Insulator Material:

PTFE

Pin and Shell Material:

Brass

Operating Temp Range:

-65 °C to +125 °C

Impedance:

50 Ω

Dielectric Withstanding Voltage:

250 Vrms min

Dielectric Working Voltage:

100 Vrms max

V.S.W.R.:

1.5 max

Frequency Range:

Internal: 0~3 GHz

External: 0~6 GHz

Max Cycles:

500

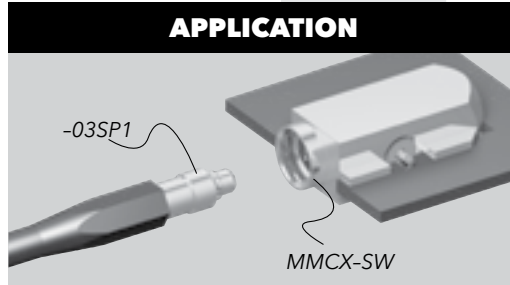
RoHS Compliant:

Yes

Mates with:

RF316, RF178,
RF174, GRF1H-C
(-03SP1 or -03RP1)

APPLICATION



Performance up to 6 GHz DC

Drop-through edge mount

Solder to PCB on right or left side

Switches from internal antenna to external antenna when cable is mated

PROCESSING

Lead-Free Solderable:
Yes

MMCX

J

P

PLATING

ORIENTATION

TERMINATION

OPTION

-HF

= 30 μ " (0.76 μ m) Gold center contact,
5 μ " (0.13 μ m) Gold outer contact

-SW

= Switchable

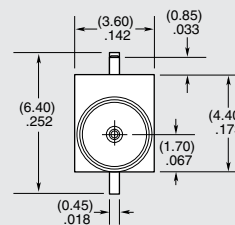
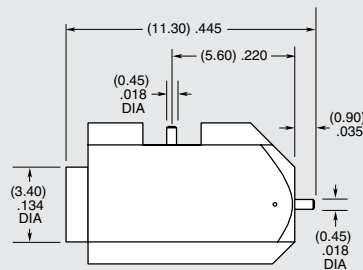
-EM1

= Edge Mount

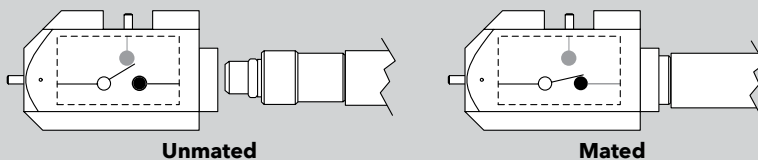
Leave blank for no Tape & Reel

-TR

= Tape & Reel



APPLICATION



Mouser Electronics

Authorized Distributor

Click to View Pricing, Inventory, Delivery & Lifecycle Information:

[Samtec:](#)

[MMCX-J-P-HF-SW-EM1](#)