



# 75 $\Omega$ MICRO-MINI SYSTEMS

## SPECIFICATIONS

For complete specifications and recommended PCB layouts see [www.samtec.com?MMCX7-TH](http://www.samtec.com?MMCX7-TH)

### Shell Material:

Brass

### Insulator Material:

PTFE

### Contact Material:

BeCu

### Pin Material:

Brass

### Operating Temp Range:

-65 °C to +125 °C

### Impedance:

75  $\Omega$

### Dielectric Withstanding Voltage:

500 Vrms, 50 Hz

### Dielectric Working Voltage:

170 Vrms, 50 Hz

### Frequency Range:

0-6 GHz

### RoHS Compliant:

Yes

## PROCESSING

### Lead-Free Solderable:

Yes

## MMCX7

## GENDER

## TYPE

## PLATING

## ORIENTATION

## TERMINATION

### Mates with:

MMCX7-P, RF179,  
GRF7H-C

### -J

= Jack

### -P

= PCB  
Mount

### -GF

= 10  $\mu$ "  
(0.25  $\mu$ m) Gold center contact,  
3  $\mu$ " (0.08  $\mu$ m) Gold outer contact

### -RA

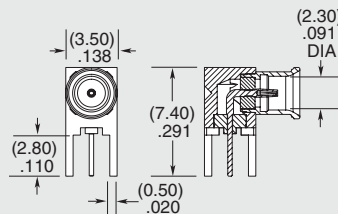
= Right-angle

### -ST

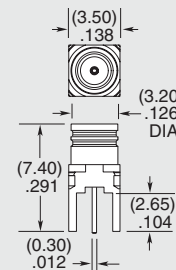
= Straight

### -TH1

= Through-hole



-RA



-ST

## OTHER SOLUTIONS

- 75  $\Omega$  Cable Components available
- Contact Samtec.

## MMCX7

## GENDER

## TYPE

## PLATING

## ST

## TH1

### Mates with:

MMCX7-J, RF179,  
GRF7H-C

### -P

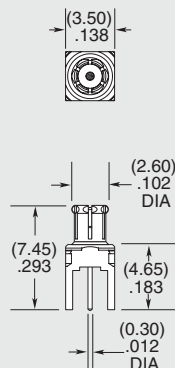
= Plug

### -P

= PCB  
Mount

### -GF

= 10  $\mu$ " (0.25  $\mu$ m) Gold center contact,  
3  $\mu$ " (0.08  $\mu$ m) Gold outer contact



Due to technical progress, all designs, specifications and components are subject to change without notice.

[WWW.SAMTEC.COM](http://WWW.SAMTEC.COM)

All parts within this catalog are built to Samtec's specifications.

Customer specific requirements must be approved by Samtec and identified in a Samtec customer-specific drawing to apply.

# Mouser Electronics

Authorized Distributor

Click to View Pricing, Inventory, Delivery & Lifecycle Information:

Samtec:

[MMCX7-J-P-GF-ST-TH1](#) [MMCX7-J-P-GF-RA-TH1](#) [MMCX7-J-C-GF-ST-CA3](#) [MMCX7-P-P-GF-ST-TH1](#) [MMCX7-P-C-HF-RA-CA3](#) [MMCX7-P-C-HF-ST-CA3](#) [MMCX7-J-P-HF-ST-TH1](#)