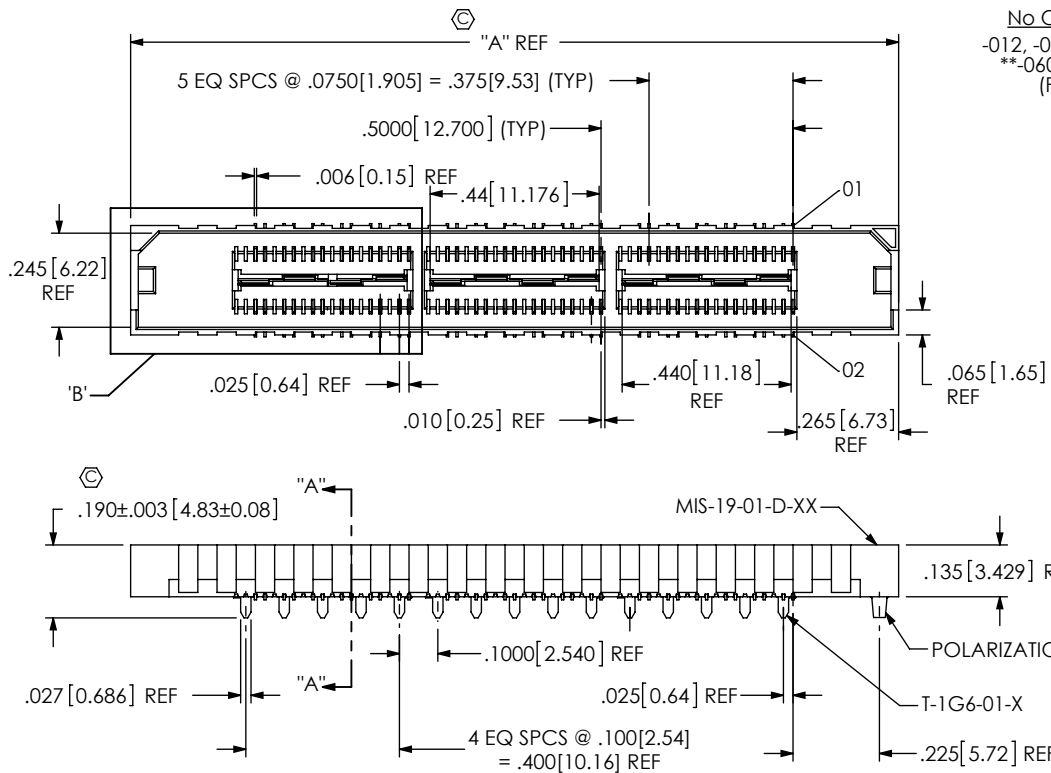


DO NOT
SCALE FROM
THIS PRINT



NO OF POSITIONS
-012, -024, -036, *-048,
*-060, *-072, *-084
(PER ROW)

OPTION
-K: POLYIMIDE FILM PAD
(USE K-DOT-.325-.450-.005,
SEE FIG 2, SHEET 2)
-TR: TAPE & REEL (-048 POS MAX)

DIFFERENTIAL PAIR

LEAD STYLE
-01: .1430[3.632]

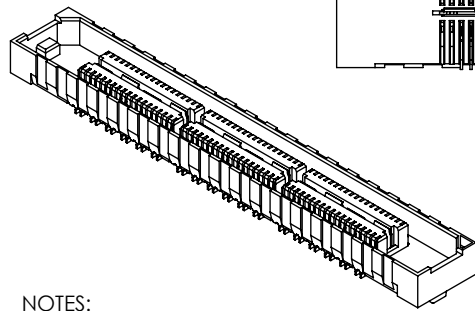
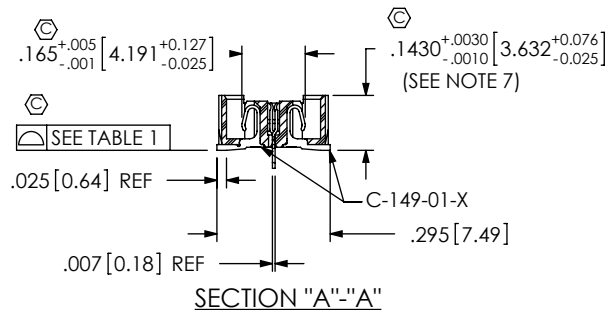
ROW SPECIFICATION
-D: DOUBLE (USE MIS-19-01-D-XX)

NO OF BANKS

PLATING SPECIFICATION

-F: 3μ" FLASH SELECTIVE GOLD IN CONTACT AREA, MATTE TIN ON TAIL
(USE C-149-01-F AND T-1G6-01-L) (SEE NOTE 9)
-L: 10μ" LIGHT SELECTIVE GOLD IN CONTACT AREA, WITH MATTE ON TIN TAIL
(USE C-149-01-L AND T-1G6-01-L)
-H: 30μ" HEAVY SELECTIVE GOLD IN CONTACT AREA, 3μ" GOLD ON TAIL
(USE C-149-01-H AND T-1G6-01-G)
-C: 50μ" ELECTRO-POLISHED SELECTIVE GOLD IN CONTACT AREA,
MATTE TIN ON TAIL (USE C-149-01-C AND T-1G6-01-L)

(* = -084 NO OF POS NOT ENGINEERING APPROVED)
(** = SEE NOTE 10)



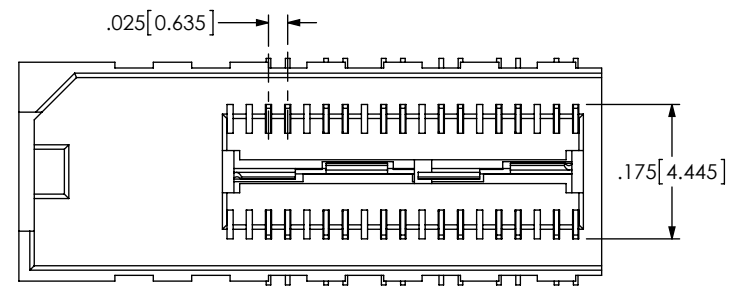
NOTES:

1. Ⓢ REPRESENTS A CRITICAL DIMENSION.
2. BURR ALLOWANCE: .0015[0.038] MAX.
3. CONTACT RETENTION: 5 OZ MINIMUM.
4. GROUND PLANE RETENTION: 8 OZ MINIMUM.
5. MAXIMUM ALLOWABLE BOW: .002 INCH/INCH [0.05 mm/mm] AFTER ASSEMBLY.
6. PARTS TO BE MOLDED TO POSITION.
7. MAX VARIANCE OF .002[0.05].
8. NOTE DELETED.
9. -L PLATING CAN BE SUBSTITUTED FOR -F PLATING.
10. PLEASE CONTACT SAMTEC INTERCONNECT PROCESSING GROUP BEFORE DESIGNING IN.
11. NOTE DELETED.

TABLE 2	
No. OF POS	"A"
-012	1.000 [25.40]
-024	1.500 [38.10]
-036	2.000 [50.80]
-048	2.500 [63.50]
-060	3.000 [76.20]
-072	3.500 [88.90]
-084	4.000 [101.60]

TABLE 1	
No Of POS	COPLANARITY
-012 THRU -048	.004[0.10]
-060 THRU -084	.006[0.15]

FIG 1
MIS-036-01-X-D-DP SHOWN



DETAIL 'B'
SCALE 4 : 1

UNLESS OTHERWISE SPECIFIED,
DIMENSIONS ARE IN INCHES.
TOLERANCES ARE:
DECIMALS ANGLES
.XX: ±.01 [.3] ± 2°
.XXX: ±.005 [.13]
.XXXX: ±.0020 [.051]

PROPRIETARY NOTE
THIS DOCUMENT CONTAINS INFORMATION
CONFIDENTIAL AND PROPRIETARY TO
SAMTEC, INC. AND SHALL NOT BE REPRODUCED
OR TRANSFERRED TO OTHER DOCUMENTS OR
DISCLOSED TO OTHERS OR USED FOR ANY
PURPOSE OTHER THAN THAT WHICH IT WAS
OBTAINED WITHOUT THE EXPRESSED WRITTEN
CONSENT OF SAMTEC, INC.

MATERIAL: DO NOT SCALE DRAWING
INSULATOR: LCP, COLOR: BLACK
CONTACT: PHOS BRONZE
GROUND PLANE: PHOS BRONZE

SHEET SCALE: 2:1

DESCRIPTION:
.635mm DIFFERENTIAL PAIRS HS SOCKET ASSEMBLY

DWG. NO.
MIS-XXX-XX-X-D-DP-XX

BY: DEAN P 3/2/2001 SHEET 1 OF 2



520 PARK EAST BLVD, NEW ALBANY, IN 47150
PHONE: 812-944-6733 FAX: 812-948-5047
e-Mail: info@SAMTEC.com code: 55322

FIG 2
-K: POLYIMIDE FILM PAD
(USE K-DOT-.325-.450-.005)

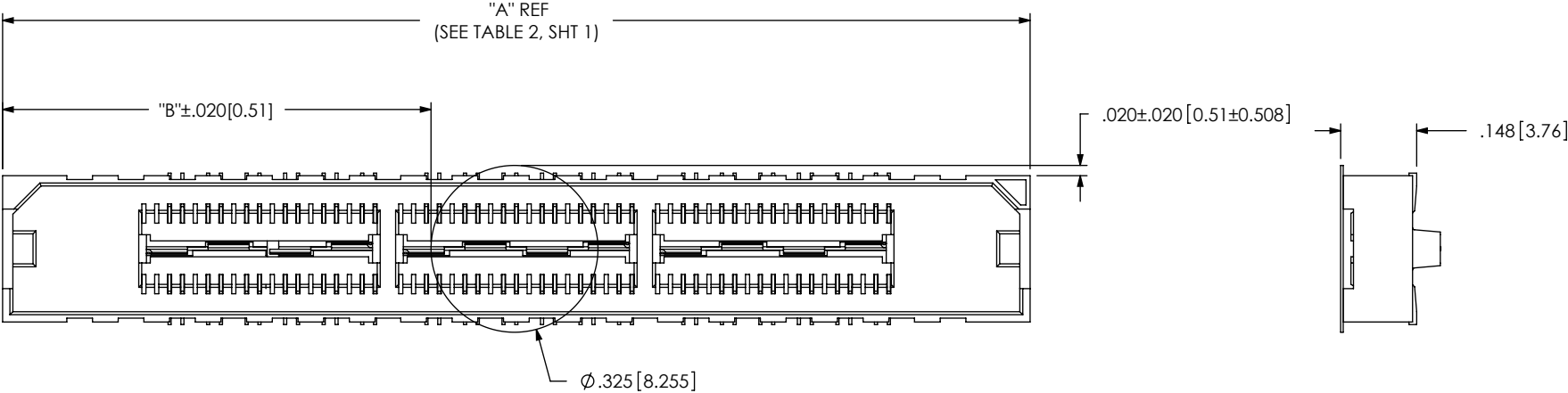
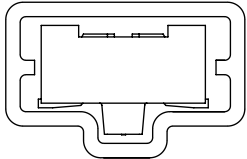


TABLE 3	
No. OF POS	"B"
-012	.338 [8.57]
-024	.588 [14.92]
-036	.838 [21.27]
-048	1.088 [27.62]
-060	1.338 [33.97]
-072	1.588 [40.32]
-084	1.838 [46.67]

PACKAGING VIEW
[PARTS TO HAVE POSITION #1 LOADED
IN SAME DIRECTION AS ARROW ON TUBE]



TUBE: PT-1-24-01-85
PLUG: TP-24

PROPRIETARY NOTE
THIS DOCUMENT CONTAINS INFORMATION
CONFIDENTIAL AND PROPRIETARY TO
SAMTEC, INC. AND SHALL NOT BE REPRODUCED
OR TRANSFERRED TO OTHER DOCUMENTS OR
DISCLOSED TO OTHERS OR USED FOR ANY
PURPOSE OTHER THAN THAT WHICH IT WAS
OBTAINED WITHOUT THE EXPRESSED WRITTEN
CONSENT OF SAMTEC, INC.

DO NOT SCALE DRAWING

SHEET SCALE: 3:1

samtec

520 PARK EAST BLVD, NEW ALBANY, IN 47150
PHONE: 812-944-6733 FAX: 812-948-5047
e-Mail: info@SAMTEC.com code: 55322

DESCRIPTION:
.635mm DIFFERENTIAL PAIRS HS SOCKET ASSEMBLY

DWG. NO. MIS-XXX-XX-X-D-DP-XX

BY: DEAN P 3/2/2001 SHEET 2 OF 2

Mouser Electronics

Authorized Distributor

Click to View Pricing, Inventory, Delivery & Lifecycle Information:

[Samtec:](#)

[MIS-048-01-F-D-DP](#) [MIS-012-01-L-D-DP](#) [MIS-048-01-L-D-DP](#) [MIS-036-01-L-D-DP](#) [MIS-024-01-L-D-DP](#) [MIS-048-01-F-D-DP-K](#) [MIS-024-01-L-D-DP-K-TR](#) [MIS-024-01-L-D-DP-TR](#) [MIS-036-01-L-D-DP-TR](#) [MIS-036-01-L-D-DP-K](#)