

IP67 SEALED 8 SERIES CABLE ASSEMBLY

MCP/MCR SERIES



MCP

Mates with:
MCR(K), MCP(K)

MCP Kit:
MCPK

MCR

Mates with:
MCP(K)

MCR Kit:
MCRK

MCP	8	LEAD STYLE	PLATING OPTION	LENGTH	END 1 OPTION	END 2 OPTION
		-02 = 12 positions, 28 AWG	-L = 10 μ" (0.25 μm) Gold on contact area	-01.00 = 1 meter -02.00 = 2 meters Standard lengths	-T = Terminal -S = Socket (Not available with End 2 -T)	-T = Terminal -S = Socket -BC = Blunt Cut

SPECIFICATIONS

Insulator Material:
PPS

Terminal Material:
Phosphor Bronze (MCP)

Contact Material:
Phosphor Bronze (MCR)

Operating Temp Range:
-20 °C to +80 °C

Gasket Material:
Silicone (MCP)
Neoprene Rubber (MCR)

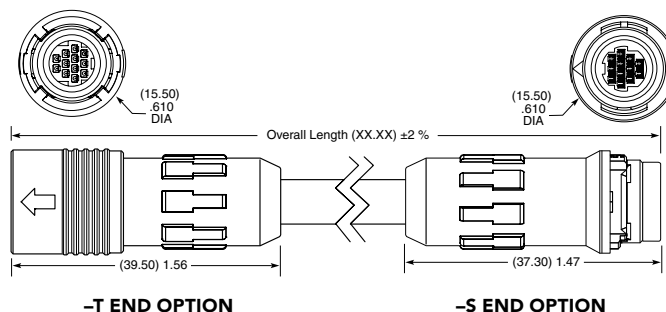
Spring Material:
Stainless Steel (MCP)

Coupling Ring Spacer:
PBT (MCP)

Cable Clamp:
POM (MCP)

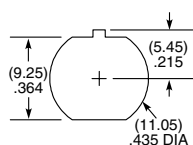
Lock Washer:
Phosphor Bronze,
Ni plated (MCR)

Hex Nut:
Brass, Ni plated (MCR)

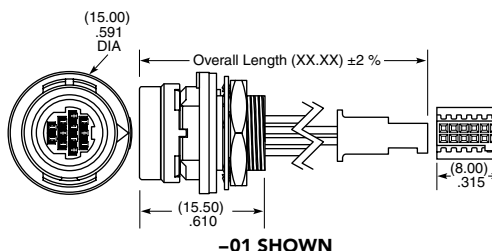


MCR	8	LEAD STYLE	PLATING OPTION	LENGTH	END 1 OPTION	END 2 OPTION
		-02 = 12 positions, 28 AWG	-L = 10 μ" (0.25 μm) Gold on contact area	-00.25 = 0.25 meter -00.50 = 0.50 meter Standard lengths	-S = Socket	-BC = Blunt Cut (Color wire only, see chart) -01 = 2x6 SFSD (Pin 1 to Pin 1) (Black wire only)

PANEL OPENING



-BC CABLE COLOR CODING	
PIN	COLOR
1	BROWN
2	RED
3	ORANGE
4	YELLOW
5	GREEN
6	DARK BLUE
7	VIOLET
8	GRAY
9	WHITE
10	BLACK
11	GREEN/BLACK
12	TAN



Notes:
Samtec's MCR, MCP Seires is dual sourced by Hirose Electric Co. LTD

Some lengths, styles and options are non-standard, non-returnable

DUST CAPS

-S (socket) = DCA-MCR-8
-T (terminal) = DCA-MCP-8

Mouser Electronics

Authorized Distributor

Click to View Pricing, Inventory, Delivery & Lifecycle Information:

[Samtec:](#)

[MCR-8-02-L-00.25-S-BC](#) [MCR-8-02-L-00.10-S-01](#) [MCR-8-02-L-00.25-S-01](#) [MCR-8-02-L-00.30-S-BC](#) [MCR-8-02-L-01.00-S-BC](#) [MCR-8-02-L-00.50-S-BC](#) [MCR-8-02-L-50.00-S-BC](#) [MCR-8-02-L-00.50-S-01](#) [MCR-8-02-L-00.18-S-01](#) [MCR-8-02-L-00.78-S-01](#) [MCR-8-02-L-00.12-S-01](#) [MCR-8-02-L-00.15-S-BC](#) [MCR-8-02-L-00.10-S-BC](#) [MCR-8-02-L-00.30-S-01](#) [MCR-8-02-L-01.00-S-01](#) [MCR-8-02-L-00.15-S-01](#) [MCR-8-02-L-00.35-S-BC](#) [MCR-8-02-L-00.20-S-BC](#) [MCR-8-02-L-00.75-S-BC](#) [MCR-8-02-L-00.20-S-01](#) [MCR-8-02-L-00.70-S-BC](#) [MCR-8-02-L-12.00-S-BC](#) [MCR-8-02-L-00.11-S-01](#) [MCR-8-02-L-03.00-S-01](#) [MCR-8-02-L-02.00-S-BC](#) [MCR-8-02-L-25.00-S-BC](#) [MCR-8-02-L-00.26-S-01](#) [MCR-8-02-L-00.23-S-01](#) [MCR-8-02-L-00.17-S-BC](#)