

## IP67 SEALED 8 SERIES CABLE ASSEMBLY

### MCP/MCR SERIES



#### MCP

Mates with:  
MCR(K), MCP(K)

MCP Kit:  
MCPK

#### MCR

Mates with:  
MCP(K)

MCR Kit:  
MCRK

### SPECIFICATIONS

**Insulator Material:**  
PPS

**Terminal Material:**  
Phosphor Bronze (MCP)

**Contact Material:**  
Phosphor Bronze (MCR)

**Operating Temp Range:**  
-20 °C to +80 °C

**Gasket Material:**  
Silicone (MCP)  
Neoprene Rubber (MCR)

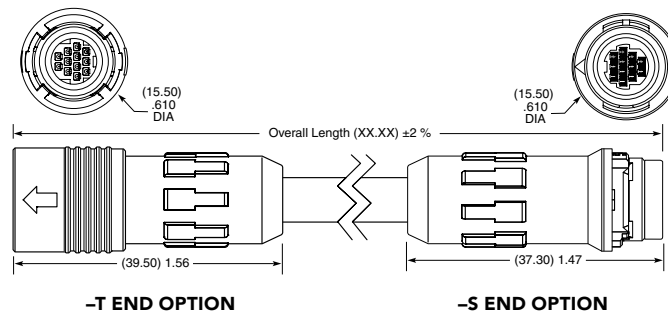
**Spring Material:**  
Stainless Steel (MCP)

**Coupling Ring Spacer:**  
PBT (MCP)

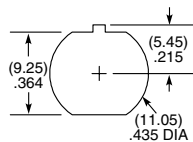
**Cable Clamp:**  
POM (MCP)

**Lock Washer:**  
Phosphor Bronze,  
Ni plated (MCR)

**Hex Nut:**  
Brass, Ni plated (MCR)

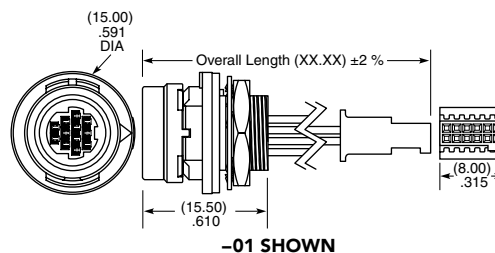


### PANEL OPENING



MCR	8	LEAD STYLE	PLATING OPTION	LENGTH	END 1 OPTION	END 2 OPTION
		-02 = 12 positions, 28 AWG	-L = 10 μ" (0.25 μm) Gold on contact area	-00.25 = 0.25 meter  -00.50 = 0.50 meter Standard lengths	-S = Socket	-BC = Blunt Cut (Color wire only, see chart)  -01 = 2x6 SFSD (Pin 1 to Pin 1) (Black wire only)

-BC CABLE COLOR CODING	
PIN	COLOR
1	BROWN
2	RED
3	ORANGE
4	YELLOW
5	GREEN
6	DARK BLUE
7	VIOLET
8	GRAY
9	WHITE
10	BLACK
11	GREEN/BLACK
12	TAN



### DUST CAPS

-S (socket) = DCA-MCR-8  
-T (terminal) = DCA-MCP-8

**Notes:**  
Samtec's MCR, MCP Seires  
is dual soruced by  
Hirose Electric Co. LTD

Some lengths, styles and  
options are non-standard,  
non-returnable

# Mouser Electronics

Authorized Distributor

Click to View Pricing, Inventory, Delivery & Lifecycle Information:

## Samtec:

[MCR-8-02-L-00.25-S-BC](#) [MCR-8-02-L-00.10-S-01](#) [MCR-8-02-L-00.25-S-01](#) [MCR-8-02-L-00.30-S-BC](#) [MCR-8-02-L-01.00-S-BC](#) [MCR-8-02-L-00.50-S-BC](#) [MCR-8-02-L-50.00-S-BC](#) [MCR-8-02-L-00.50-S-01](#) [MCR-8-02-L-00.18-S-01](#) [MCR-8-02-L-00.78-S-01](#) [MCR-8-02-L-00.12-S-01](#) [MCR-8-02-L-00.15-S-BC](#) [MCR-8-02-L-00.10-S-BC](#) [MCR-8-02-L-00.30-S-01](#) [MCR-8-02-L-01.00-S-01](#) [MCR-8-02-L-00.15-S-01](#) [MCR-8-02-L-00.35-S-BC](#) [MCR-8-02-L-00.20-S-BC](#)