

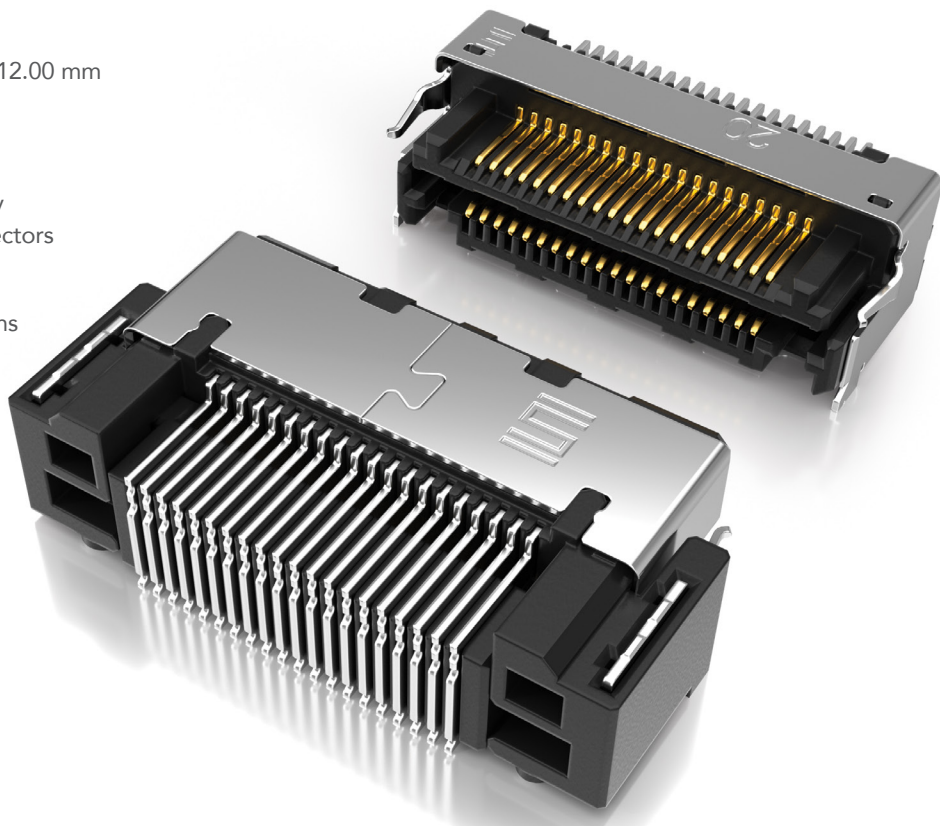
FINE PITCH SELF MATING CONNECTORS

0.50 mm, 0.635 mm and 0.80 mm PITCH

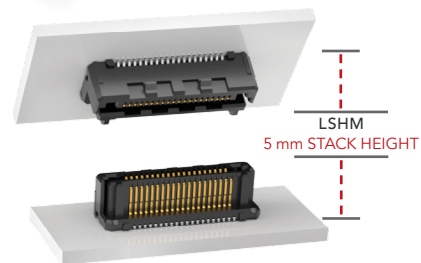
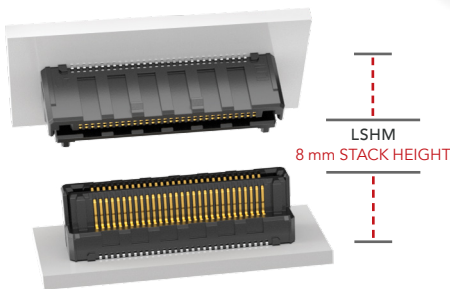
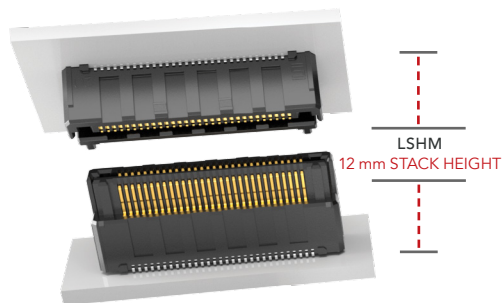
FEATURES & BENEFITS

- Ten stack height options from 5.00 mm to 12.00 mm
- 0.50 mm, 0.635 mm or 0.80 mm pitches
- Audible click when mated
- Mating and unmating forces approximately 4-6x greater than typical micro pitch connectors
- Self-mating system reduces inventory cost
- Parallel, perpendicular and coplanar systems
- Shielded and lubricated options
- Severe Environment Testing qualified (LSHM); aligns with MIL-DTL-55302.

Visit samtec.com/set



SLIM BODY DESIGNS (40 total positions each)

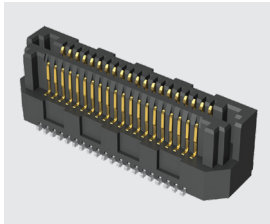


KEY SPECIFICATIONS

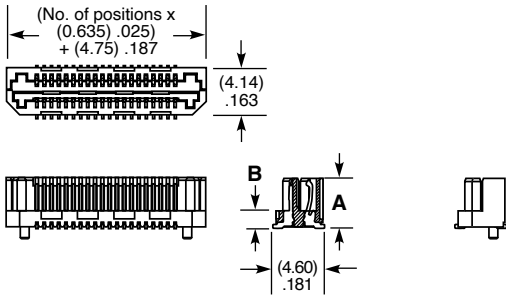
INSULATOR MATERIAL	CONTACT MATERIAL	PLATING	OPERATING TEMP RANGE	CURRENT RATING	VOLTAGE RATING	SMT COPLANARITY	LEAD-FREE SOLDERABLE
Black LCP	Phosphor Bronze	Au or Sn over 50 μ" (1.27 μm) Ni	-55 °C to +125 °C	LSHM: 2.0 A per pin LSS: 1.7 A per pin LSEM: 1.8 A per pin	LSHM: 160 VAC/226 VDC LSS: 300 VAC/424 VDC LSEM: 225 VAC/318 VDC	(0.10 mm) .004" max	Yes

(0.635 mm) .025" PITCH • RUGGED HERMAPHRODITIC CONNECTORS

LSS	1	NO. PINS PER ROW	LEAD STYLE	PLATING OPTION	DV	A	OPTION	"X"R
		10, 20, 30, 40, 50	Specify LEAD STYLE from chart	-F = Gold flash on contact, Matte Tin on tail -L = 10 μ" (0.25 μm) Gold on contact, Matte Tin on tail			-K = (3.50 mm) .138" DIA Polyimide film Pick & Place Pad	Leave blank for Tray Packaging -TR = Tape & Reel -FR = Full Reel Tape & Reel (must order maximum quantity per reel; contact Samtec for quantity breaks)



LEAD STYLE	A	B
-01	(4.45) .1752	(1.59) .0628
-02	(7.45) .2933	(4.59) .1808
-03	(5.45) .2146	(2.59) .1021

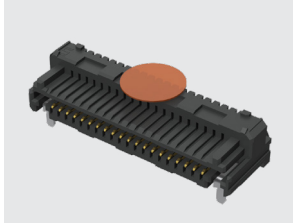


LEAD STYLE	MATED HEIGHT *
-01 & -01	(6.00) .236
-01 & -03	(7.00) .276
-03 & -03	(8.00) .315
-01 & -02	(9.00) .354
-02 & -03	(10.00) .394
-02 & -02	(12.00) .472

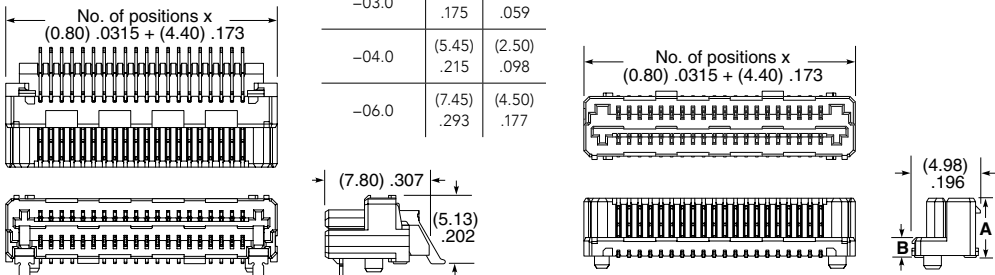
View complete specifications at: samtec.com?LSS

(0.80 mm) .0315" PITCH • RUGGED HERMAPHRODITIC CONNECTORS

LSEM	1	NO. PINS PER ROW	LEAD STYLE	PLATING OPTION	TAIL OPTION	A	N	K	"X"R
		20, 30, 40, 50	Specify LEAD STYLE from chart	-F = Gold flash on contact, Matte Tin on tail -L = 10 μ" (0.25 μm) Gold on contact, Matte Tin on tail	-DV = Vertical -DH = Right-angle (Lead style -01 only)			-K = (3.50 mm) .138" DIA Polyimide film Pick & Place Pad	-TR = Tape & Reel -FR = Full Reel Tape & Reel (must order maximum quantity per reel; contact Samtec for quantity breaks)



LEAD STYLE	A	B
-01 (-DH only)	N/A	NA
-03.0	(4.45) .175	(1.50) .059
-04.0	(5.45) .215	(2.50) .098
-06.0	(7.45) .293	(4.50) .177



LEAD STYLE	MATED HEIGHT *
-03.0 & -03.0	(6.00) .236
-03.0 & -04.0	(7.00) .276
-04.0 & -04.0	(8.00) .315
-03.0 & -06.0	(9.00) .354
-04.0 & -06.0	(10.00) .394
-06.0 & -06.0	(12.00) .472

Note: Some lengths, styles and options are non-standard, non-returnable.

View complete specifications at: samtec.com?LSEM

Mouser Electronics

Authorized Distributor

Click to View Pricing, Inventory, Delivery & Lifecycle Information:

[Samtec:](#)

[LSS-120-01-L-DV-A-K-TR](#) [LSS-120-02-L-DV-A-K-TR](#) [LSS-140-02-F-DV-A-K-TR](#) [LSS-150-02-F-DV-A](#) [LSS-130-02-L-DV-A-K-TR](#) [LSS-110-01-F-DV-A-TR](#) [LSS-140-01-F-DV-A-K-TR](#) [LSS-140-02-F-DV-A](#) [LSS-110-02-L-DV-A-K-TR](#) [LSS-130-01-F-DV-A](#) [LSS-120-03-L-DV-A-K](#) [LSS-150-03-L-DV-A-K-TR](#) [LSS-110-01-L-DV-A-K](#) [LSS-130-01-L-DV-A](#) [LSS-150-02-L-DV-A](#) [LSS-105-01-F-DV-A-K-TR](#) [LSS-150-01-L-DV-A-K-TR](#) [LSS-140-01-L-DV-A-K-TR](#) [LSS-150-01-F-DV-A-K](#) [LSS-130-02-F-DV-A-K-TR](#) [LSS-130-02-L-DV-A](#) [LSS-120-01-F-DV-A-K](#) [LSS-130-03-L-DV-A](#) [LSS-130-01-F-DV-A-K](#) [LSS-150-02-L-DV-A-K-TR](#) [LSS-110-02-F-DV-A-K-TR](#) [LSS-110-03-L-DV-A](#) [LSS-150-01-L-DV-A](#) [LSS-110-02-L-DV-A](#) [LSS-110-01-L-DV-A-K-TR](#) [LSS-110-03-L-DV-A-K-TR](#) [LSS-110-01-F-DV-A-K](#) [LSS-120-01-F-DV-A-TR](#) [LSS-130-02-F-DV-A](#) [LSS-110-01-F-DV-A-K-TR](#) [LSS-140-01-L-DV-A](#) [LSS-110-01-F-DV-A](#) [LSS-130-01-L-DV-A-K](#) [LSS-110-02-F-DV-A](#) [LSS-140-03-F-DV-A-K-TR](#) [LSS-120-01-F-DV-A](#) [LSS-120-03-F-DV-A](#) [LSS-120-01-L-DV-A-K](#) [LSS-140-01-F-DV-A-K](#) [LSS-120-03-F-DV-A-K-TR](#) [LSS-130-01-L-DV-A-K-TR](#) [LSS-130-03-F-DV-A-K-TR](#) [LSS-150-03-L-DV-A](#) [LSS-120-02-F-DV-A](#) [LSS-130-03-F-DV-A-K](#) [LSS-140-01-L-DV-A-K](#) [LSS-120-02-L-DV-A](#) [LSS-130-01-F-DV-A-K-TR](#) [LSS-130-03-F-DV-A](#) [LSS-120-03-L-DV-A](#) [LSS-110-01-L-DV-A](#) [LSS-120-03-L-DV-A-K-TR](#) [LSS-150-01-L-DV-A-K](#) [LSS-110-03-F-DV-A-K-TR](#) [LSS-120-02-L-DV-A-K](#) [LSS-110-02-L-DV-A-K](#) [LSS-120-02-F-DV-A-K-TR](#) [LSS-140-02-L-DV-A](#) [LSS-110-03-F-DV-A](#) [LSS-140-03-L-DV-A](#) [LSS-120-01-L-DV-A](#) [LSS-120-03-F-DV-A-K](#) [LSS-140-02-L-DV-A-K](#) [LSS-140-01-L-DV-A-TR](#) [LSS-105-03-F-DV-A-K-TR](#) [LSS-130-02-L-DV-A-K](#) [LSS-105-01-L-DV-A-TR](#) [LSS-140-03-L-DV-A-K-TR](#) [LSS-105-01-L-DV-A](#) [LSS-130-01-F-DV-A-TR](#) [LSS-130-02-F-DV-A-K](#) [LSS-110-02-F-DV-A-TR](#) [LSS-110-03-F-DV-A-K](#) [LSS-110-03-L-DV-K-TR](#) [LSS-130-02-F-DV-A-TR](#) [LSS-140-03-F-DV-A](#) [LSS-150-03-F-DV-A-K-TR](#) [LSS-110-02-F-DV-A-K](#) [LSS-110-02-L-DV-A-TR](#) [LSS-130-03-F-DV-A-TR](#) [LSS-110-03-F-DV-A-TR](#) [LSS-120-03-L-DV-A-TR](#) [LSS-150-01-F-DV-A-K-TR](#) [LSS-110-03-L-DV-K](#) [LSS-150-02-F-DV-A-K-TR](#) [LSS-120-02-F-DV-A-K](#) [LSS-130-02-L-DV-A-TR](#) [LSS-120-02-L-DV](#) [LSS-120-02-F-DV-K](#) [LSS-120-02-F-DV-K-TR](#) [LSS-130-02-L-DV](#) [LSS-130-02-L-DV-LC](#) [LSS-140-02-F-DV-A-K](#) [LSS-130-01-L-DV-A-TR](#) [LSS-140-01-F-DV-A-TR](#)