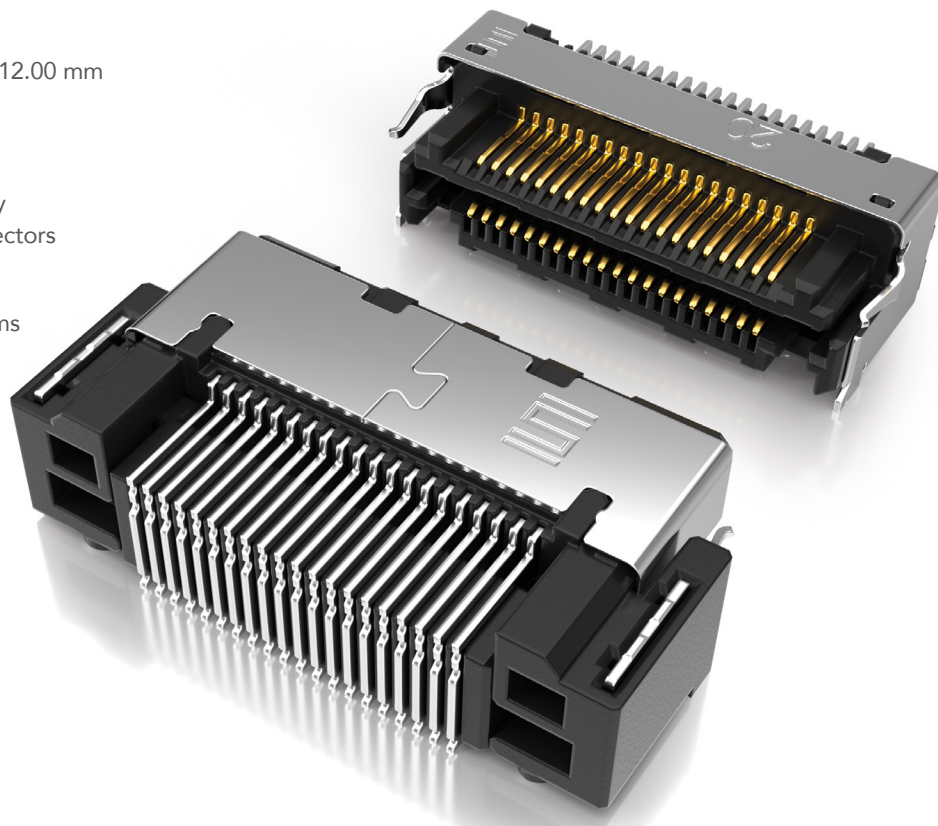


FINE PITCH SELF MATING CONNECTORS

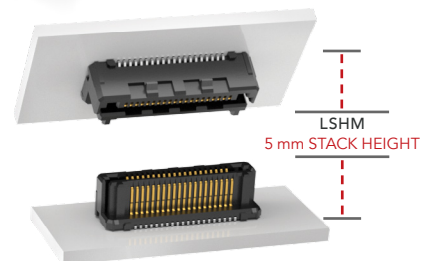
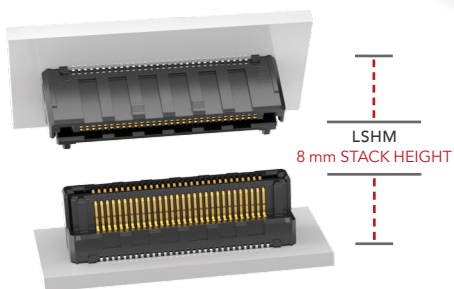
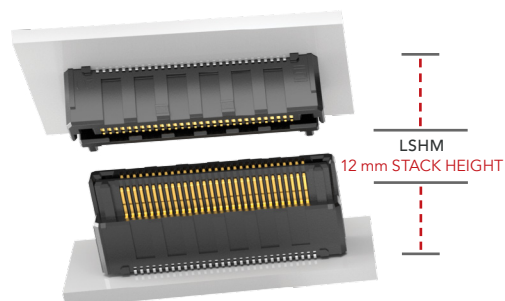
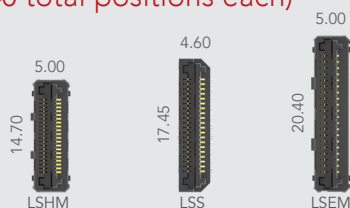
0.50 mm, 0.635 mm and 0.80 mm PITCH

FEATURES & BENEFITS

- Ten stack height options from 5.00 mm to 12.00 mm
 - 0.50 mm, 0.635 mm or 0.80 mm pitches
 - Audible click when mated
 - Mating and unmating forces approximately 4-6x greater than typical micro pitch connectors
 - Self-mating system reduces inventory cost
 - Parallel, perpendicular and coplanar systems
 - Shielded and lubricated options
 - Severe Environment Testing qualified (LSHM); aligns with MIL-DTL-55302.
- Visit samtec.com/set



SLIM BODY DESIGNS (40 total positions each)



KEY SPECIFICATIONS

INSULATOR MATERIAL	CONTACT MATERIAL	PLATING	OPERATING TEMP RANGE	CURRENT RATING	VOLTAGE RATING	SMT COPLANARITY	LEAD-FREE SOLDERABLE
Black LCP	Phosphor Bronze	Au or Sn over 50 μ " (1.27 μ m) Ni	-55 °C to +125 °C	LSHM: 2.0 A per pin LSS: 1.7 A per pin LSEM: 1.8 A per pin	LSHM: 160 VAC/226 VDC LSS: 300 VAC/424 VDC LSEM: 225 VAC/318 VDC	(0.10 mm) .004" max	Yes

(0.50 mm) .0197" PITCH • RUGGED HERMAPHRODITIC CONNECTORS

LSHM	1	NO. PINS PER ROW	LEAD STYLE	PLATING OPTION	TAIL OPTION	A	SHIELD OPTION	K	"X"R
------	---	------------------	------------	----------------	-------------	---	---------------	---	------

05, 10, 20,
30, 40, 50

(Vertical)
Specify
LEAD
STYLE
from
chart

–F
= Gold flash
on contact,
Matte Tin on tail

–DV
= Vertical

–S
= With
Shield

–K
= (3.50 mm)
.138" DIA
Polyimide
film Pick &
Place Pad

–TR
= Tape &
Reel

LSHM

Board Mates:

LSHM

Cable Mates:

HLCD

(Right-angle)
–01
= Standard

–L
= 10 μ" (0.25 μm)
Gold on contact,
Matte Tin on tail

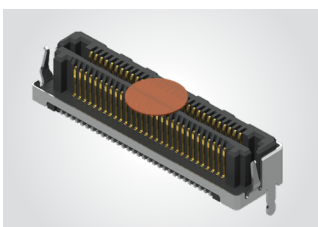
–DH
= Right-angle
(Lead style –01
& –L1 only)

–N
= Without
Shield

–FR
= Full Reel
Tape & Reel
(must order
maximum
quantity
per reel;
contact
Samtec for
quantity
breaks)

(Right-angle)
–L1
= Lubricated

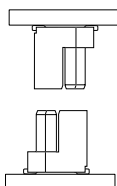
–RH
= Reverse
Right-angle
(Lead style –01
& –L1 only)



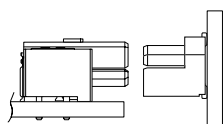
LEAD STYLE	MATED HEIGHT *
–02.5 & –02.5	(5.00) .196
–02.5 & –03.0	(5.50) .217
–03.0 & –03.0	(6.00) .236
–02.5 & –04.0	(6.50) .256
–03.0 & –04.0	(7.00) .276
–04.0 & –04.0	(8.00) .315
–02.5 & –06.0	(8.50) .335
–03.0 & –06.0	(9.00) .354
–04.0 & –06.0	(10.00) .394
–06.0 & –06.0	(12.00) .472

*Processing conditions will affect mated height.

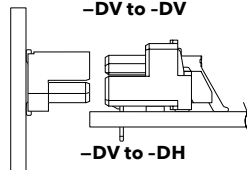
APPLICATION



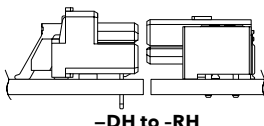
–DV to –DV



–RH to –DV



–DV to –DH

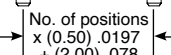


–DH to –RH

No. of positions
x (0.50) .0197
+ (4.70) .185



No. of positions
x (0.50) .0197
+ (2.00) .078



–DV–N



–DV–S

–DV–S

–DV–S

–DV–S

–DV–S

–DV–S

–DV–S

–DV–S

–DV–S

–DV–S

–DV–S

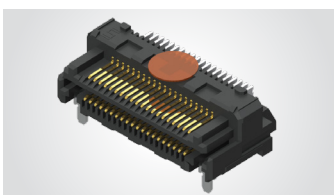
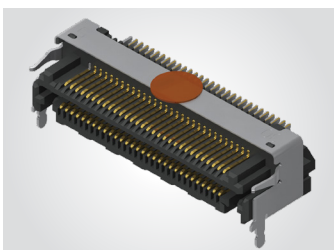
–DV–S

–DV–S

–DV–S

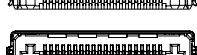
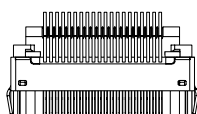
–DV–S

LEAD STYLE (STANDARD)	LEAD STYLE (LUBRICATED)	A	B
–02.5	–L2.5	(3.95) .156	(1.00) .039
–03.0	–L3.0	(4.45) .175	(1.50) .059
–04.0	–L4.0	(5.45) .215	(2.50) .098
–06.0	–L6.0	(7.45) .293	(4.50) .177

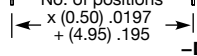


Notes:
Severe Environment Testing
qualified; aligns with MIL-DTL-55302.
Visit samtec.com/set

Some lengths, styles and options are
non-standard, non-returnable.

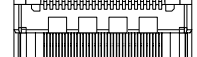


No. of positions
x (0.50) .0197
+ (4.95) .195



–DH–S

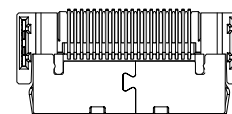
No. of positions
x (0.50) .0197
+ (4.70) .185



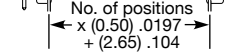
No. of positions
x (0.50) .0197
+ (1.90) .074



–DH–N

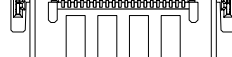


No. of positions
x (0.50) .0197
+ (2.65) .104

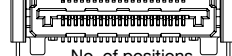


–RH–S

No. of positions
x (0.50) .0197
+ (7.70) .303



No. of positions
x (0.50) .0197
+ (6.60) .259



–RH–N

View complete specifications at: samtec.com?LSHM

Mouser Electronics

Authorized Distributor

Click to View Pricing, Inventory, Delivery & Lifecycle Information:

[Samtec:](#)

[LSHM-130-2.5-L-DV-A-S-K-TR](#)