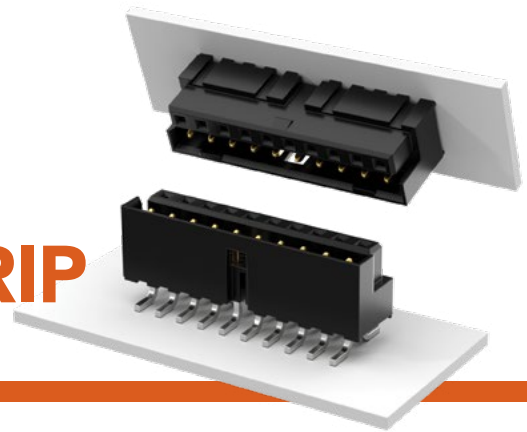


SELF MATING HERMAPHRODITIC STRIP

(2.00 mm) .0787" PITCH • LS2 SERIES



LS2

Mates:

LS2

SPECIFICATIONS

Insulator Material:

Black Liquid Crystal
Polymer

Contact Material:

Phosphor Bronze

Plating:

Au or Sn over
50 μ " (1.27 μ m) Ni

Current Rating:

3.2 A per pin
(6 adjacent pins powered)

Voltage Rating:

475 VAC mated with LS2

Operating Temp Range:

-55 °C to +125 °C

PROCESSING

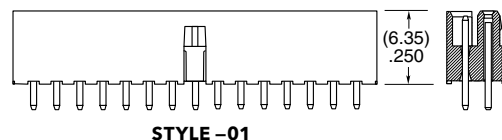
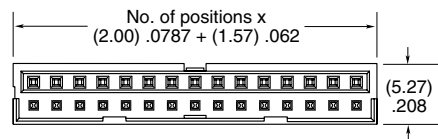
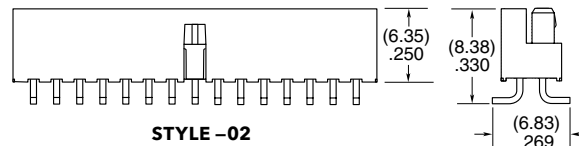
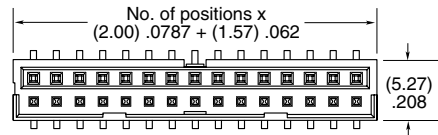
Lead-Free Solderable:

Yes

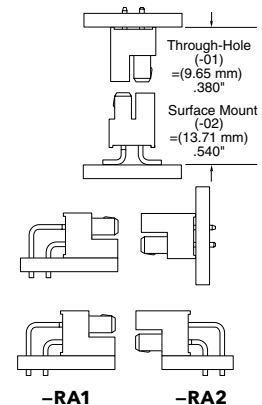
SMT Lead Coplanarity:

(0.15 mm) .006" max*
*(.004" stencil solution
may be available; contact
ipg@samtec.com)

LS2	1	NO. PINS PER ROW	LEAD STYLE	PLATING OPTION	D	TAIL OPTION	OPTION
		05, 10, 15, 20, 25, 30	-01 =Through- hole -02 = Surface Mount	-F = Gold flash on contact, Matte Tin on tail -L = 10 μ " (0.25 μ m) Gold on contact, Matte Tin on tail		-01 only -RA1 = Right-angle (Shroud Down) -RA2 = Right-angle (Shroud Up)	-K = (6.30 mm) .248" DIA Polyimide Film Pick & Place Pad (-02 only) -TR = Tape & Reel -FR = Full Reel Tape & Reel (must order max. quantity per reel; contact Samtec for quantity breaks)



APPLICATION



ALSO AVAILABLE

MOQ Required

Alignment pin

Other platings

Other stack heights

Note:

Some lengths, styles and
options are non-standard,
non-returnable.

Mouser Electronics

Authorized Distributor

Click to View Pricing, Inventory, Delivery & Lifecycle Information:

[Samtec:](#)

[LS2-110-01-F-D-RA1](#) [LS2-130-01-L-D](#) [LS2-120-01-L-D-RA1](#) [LS2-115-01-F-D-RA2](#) [LS2-110-01-F-D](#) [LS2-115-01-L-D-RA1](#) [LS2-105-01-F-D-RA1](#) [LS2-115-01-L-D](#) [LS2-115-01-F-D](#) [LS2-105-01-L-D](#) [LS2-105-01-L-D-RA1](#) [LS2-120-01-L-D-RA2](#) [LS2-105-01-F-D-RA2](#) [LS2-105-01-F-D](#) [LS2-105-02-F-D](#) [LS2-110-02-F-D-K-TR](#) [LS2-110-01-L-D-RA2](#) [LS2-110-01-L-D](#) [LS2-115-01-F-D-RA1](#) [LS2-110-01-L-D-RA1](#) [LS2-120-01-L-D](#) [LS2-105-01-S-D](#) [LS2-110-01-S-D-RA1](#) [LS2-125-01-L-D-RA1](#) [LS2-130-02-L-D](#) [LS2-130-02-L-D-A-K-TR](#) [LS2-110-01-F-D-RA2](#) [LS2-105-01-SM-D-RA1](#) [LS2-110-01-SM-D-RA2](#) [LS2-115-02-F-D-K-TR](#) [LS2-125-02-L-D-K](#) [LS2-125-02-S-D-K-TR](#) [LS2-130-01-F-D-RA1-TR](#) [LS2-105-01-LM-D-RA2](#) [LS2-115-02-S-D-A](#) [LS2-115-02-L-D-A](#) [LS2-105-02-L-D-K-TR](#) [LS2-105-02-S-D-TR](#) [LS2-105-02-SM-D-TR](#) [LS2-110-01-F-D-RA2-TR](#) [LS2-115-01-F-D-RA1-TR](#) [LS2-125-02-L-D-K-TR](#) [LS2-110-01-S-D-RA1-TR](#) [LS2-120-02-G-D](#) [LS2-105-01-FM-D-RA1](#) [LS2-115-02-L-D-A-K-TR](#) [LS2-110-02-S-D-TR](#) [LS2-115-01-F-D-RA2-TR](#) [LS2-105-01-LM-D-RA1](#) [LS2-105-01-LM-D-RA1-TR](#) [LS2-110-02-L-D-A-K-TR](#) [LS2-115-02-G-D](#) [LS2-105-01-L-D-RA2-TR](#) [LS2-115-01-L-D-RA2-TR](#) [LS2-120-01-F-D-RA2-TR](#) [LS2-120-01-L-D-RA1-TR](#) [LS2-105-02-SM-D-K-TR](#) [LS2-110-02-L-D-A](#) [LS2-120-02-S-D-K-TR](#) [LS2-105-01-F-D-RA1-TR](#) [LS2-115-01-L-D-RA1-TR](#) [LS2-115-01-SM-D-RA1](#) [LS2-130-02-L-D-K-TR](#) [LS2-105-01-LM-D](#) [LS2-105-01-S-D-TR](#) [LS2-105-02-L-D-A-K](#) [LS2-110-01-L-D-RA1-TR](#) [LS2-110-01-LM-D-RA1](#) [LS2-110-02-F-D-A](#) [LS2-120-02-S-D-TR](#) [LS2-110-01-S-D-TR](#) [LS2-115-02-F-D-A](#) [LS2-120-02-F-D-K-TR](#) [LS2-120-02-L-D-A](#) [LS2-105-01-FM-D](#) [LS2-105-01-L-D-RA1-TR](#) [LS2-130-01-L-D-RA1-TR](#) [LS2-120-02-L-D-K-TR](#) [LS2-130-02-L-D-TR](#) [LS2-105-01-F-D-RA2-TR](#) [LS2-105-01-F-D-TR](#) [LS2-110-01-S-D-RA2-TR](#) [LS2-110-01-LM-D](#) [LS2-115-01-SM-D](#) [LS2-125-01-L-D-RA1-TR](#) [LS2-130-02-L-D-A](#) [LS2-105-02-L-D-A](#) [LS2-120-02-F-D-TR](#) [LS2-115-01-G-D-TR](#) [LS2-105-01-L-D-TR](#) [LS2-110-01-LM-D-RA2](#) [LS2-115-02-L-D-K-TR](#) [LS2-105-01-S-D-RA2-TR](#) [LS2-105-01-SM-D](#) [LS2-110-02-F-D-TR](#) [LS2-125-01-S-D-RA2-TR](#) [LS2-130-01-L-D-TR](#) [LS2-120-02-L-D-A-K](#) [LS2-110-01-F-D-TR](#) [LS2-110-02-G-D](#)