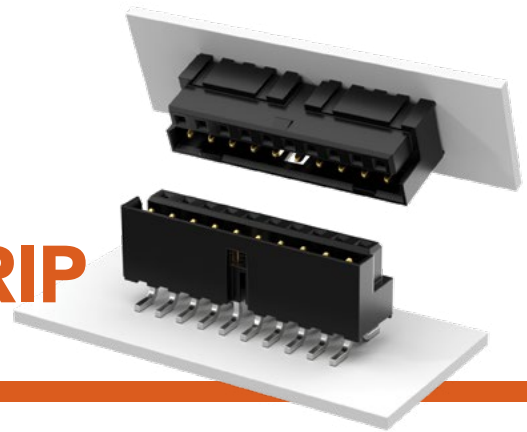


SELF MATING HERMAPHRODITIC STRIP

(2.00 mm) .0787" PITCH • LS2 SERIES



LS2
Mates:
LS2

LS2	1	NO. PINS PER ROW	LEAD STYLE	PLATING OPTION	D	TAIL OPTION	OPTION
-----	---	------------------	------------	----------------	---	-------------	--------

05, 10, 15,
20, 25, 30

-01
= Through-hole

-02
= Surface Mount

-F
= Gold flash on contact,
Matte Tin on tail

-L
= 10 μ" (0.25 μm)
Gold on contact,
Matte Tin on tail

-01 only

-RA1
= Right-angle
(Shroud Down)

-RA2
= Right-angle
(Shroud Up)

-K
= (6.30 mm)
.248" DIA
Polyimide
Film Pick &
Place Pad
(-02 only)

-TR
= Tape &
Reel

-FR
= Full Reel
Tape & Reel
(must order
max. quantity
per reel;
contact
Samtec for
quantity
breaks)

SPECIFICATIONS

Insulator Material:
Black Liquid Crystal
Polymer

Contact Material:
Phosphor Bronze

Plating:
Au or Sn over
50 μ" (1.27 μm) Ni

Current Rating:
3.2 A per pin
(6 adjacent pins powered)

Voltage Rating:
475 VAC mated with LS2

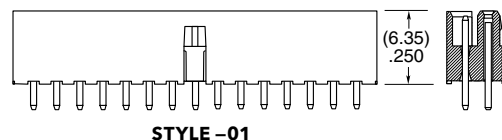
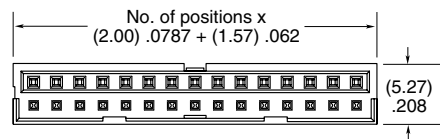
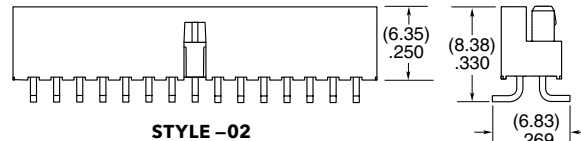
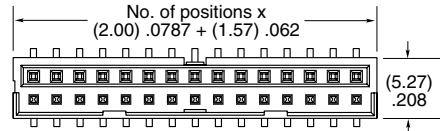
Operating Temp Range:
-55 °C to +125 °C

PROCESSING

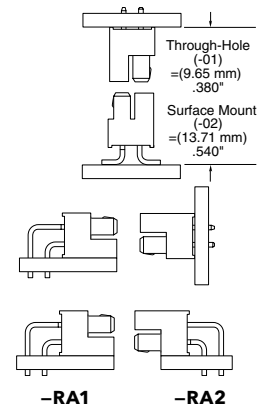
Lead-Free Solderable:

Yes

SMT Lead Coplanarity:
(0.15 mm) .006" max*
*(.004" stencil solution
may be available; contact
ipg@samtec.com)



APPLICATION



ALSO AVAILABLE

MOQ Required

Alignment pin
Other platings
Other stack heights

Note:
Some lengths, styles and
options are non-standard,
non-returnable.

Mouser Electronics

Authorized Distributor

Click to View Pricing, Inventory, Delivery & Lifecycle Information:

[Samtec:](#)

[LS2-115-02-L-D-A-TR](#)