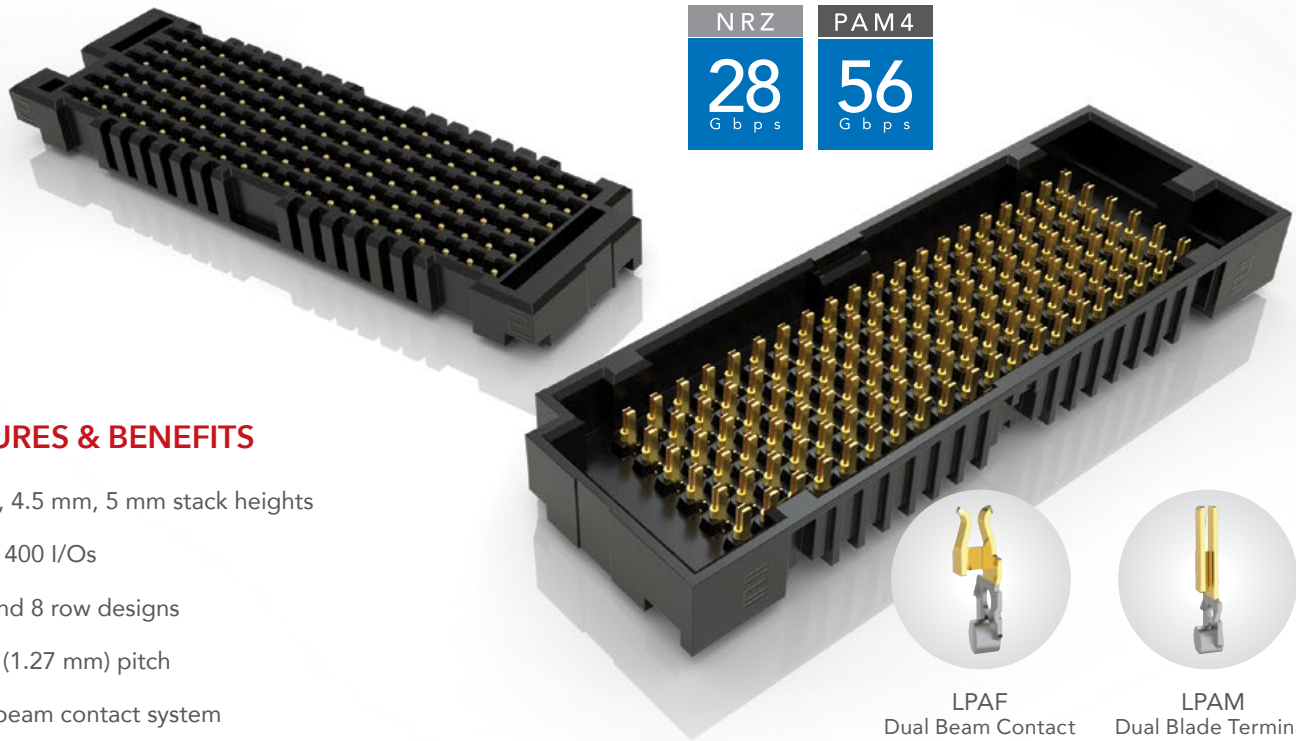


# LPARRAY™

## LOW-PROFILE OPEN-PIN-FIELD ARRAYS

(1.27 mm) .050" PITCH



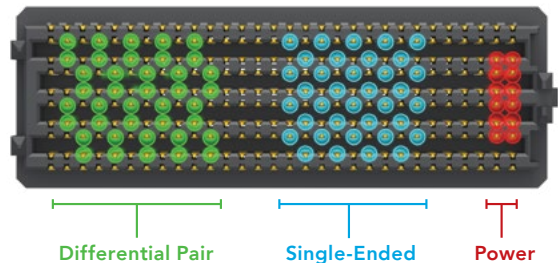
### FEATURES & BENEFITS

- 4 mm, 4.5 mm, 5 mm stack heights
- Up to 400 I/Os
- 4, 6 and 8 row designs
- .050" (1.27 mm) pitch
- Dual beam contact system
- Solder crimp termination for ease of processing
- Board stacking standoffs available to assist unmating and reduce risk for component damage on board



LPAM Series; 120 pins  
(actual size shown)

### MAXIMUM GROUNDING & ROUTING FLEXIBILITY



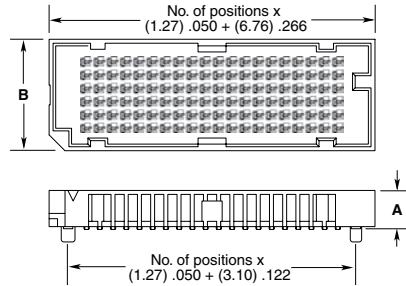
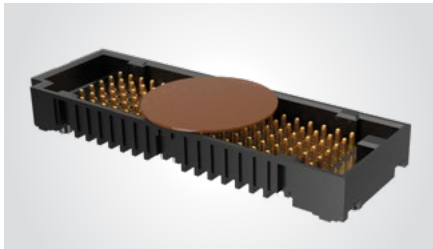
### KEY SPECIFICATIONS

PITCH	TOTAL PINS	INSULATOR MATERIAL	CONTACT MATERIAL	PLATING	CURRENT RATING	WORKING VOLTAGE	LEAD-FREE SOLDERABLE
1.27 mm x 1.27 mm	Up to 400 I/Os	Black LCP	Copper Alloy	Au or Sn over 50 μ" (1.27 μm) Ni	2.2 A per pin (8 adjacent pins powered)	250 VAC	YES

**(1.27 mm) .050" PITCH • LOW-PROFILE OPEN-PIN-FIELD ARRAYS**

SERIES	NO. PINS PER ROW	LEAD STYLE	PLATING OPTION	NO. OF ROWS	SOLDER TYPE	K	"X"R
LPAM Terminal	-10, -20, -30, -40,	-01.0 = (1.0 mm) .039" (LPAM only)	-L = 10 μ" (0.25 μm) Gold on contact area, Matte Tin on solder tail	-04 -06 -08	-1 = Tin/Lead Alloy Solder Crimp		-K = Polyimide film Pick & Place Pad
LPAF Socket	-50 (-08 rows only)	-01.5 = (1.5 mm) .060" (LPAM only)	-S = 30 μ" (0.76 μm) Gold on contact area, Matt Tin on solder tail		-2 = Lead-Free Solder Crimp		-TR =Tape & Reel
		-03.0 = (3.0 mm) .118" (LPAF only)					-FR =Full Reel Tape & Reel (must order max. quantity per reel; contact Samtec for quantity breaks)
		-03.5 = (3.5 mm) .138" (LPAF only)					

**LPAM**  
Board Mates:  
LPAF  
Standoffs:  
JSO, SO

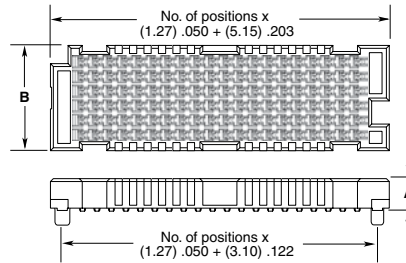
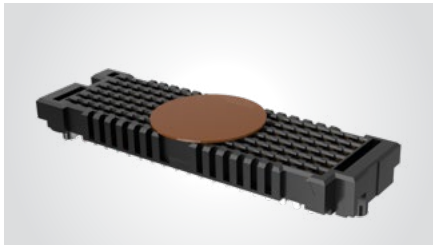


NO. OF ROWS	B
-04	(8.18) .322
-06	(10.72) .422
-08	(13.26) .522

LEAD STYLE	A
-01.0	(3.68) .145
-01.5	(4.19) .165

View complete specifications at: [samtec.com?LPAM](http://samtec.com?LPAM)

**LPAF**  
Board Mates:  
LPAM  
Standoffs:  
JSO, SO



NO. OF ROWS	B
-04	(6.71) .264
-06	(9.25) .364
-08	(11.79) .464

LEAD STYLE	A
-03.0	(2.79) .110
-03.5	(3.30) .130

MATED HEIGHTS*		
LPAM LEAD STYLE	LPAF LEAD STYLE	
	-03.0	-03.5
-01.0	(4.00) .157	(4.50) .177
-01.5	(4.50) .177	(5.00) .197

\*Processing conditions will affect mated height.

**Notes:**  
Some sizes, styles and options are non-standard, non-returnable

View complete specifications at: [samtec.com?LPAF](http://samtec.com?LPAF)

# Mouser Electronics

Authorized Distributor

Click to View Pricing, Inventory, Delivery & Lifecycle Information:

## Samtec:

[LPAM-40-01.5-S-08-2-K-TR](#) [LPAM-20-01.0-L-04-2-K-TR](#) [LPAM-30-01.5-L-06-2-K-TR](#) [LPAM-10-01.0-L-04-2-K-TR](#)  
[LPAM-30-01.0-L-06-2-K-TR](#) [LPAM-40-01.0-L-06-2-K-TR](#) [LPAM-20-01.5-S-08-2-K-TR](#) [LPAM-40-01.0-S-08-2-K-TR](#)  
[LPAM-20-01.0-L-08-2-K-TR](#) [LPAM-30-01.0-L-06-1-K-TR](#) [LPAM-40-01.5-L-08-2-K-TR](#) [LPAM-40-01.0-L-08-1-K-TR](#)  
[LPAM-30-01.0-L-08-1-K-TR](#) [LPAM-10-01.0-L-06-1-K-TR](#) [LPAM-40-01.0-L-04-2-K-TR](#) [LPAM-10-01.0-L-08-2-K-TR](#)  
[LPAM-10-01.5-L-04-1-K-TR](#) [LPAM-40-01.5-S-04-2-K-TR](#) [LPAM-40-01.5-L-04-2-K-TR](#) [LPAM-40-01.5-L-08-1-K-TR](#)  
[LPAM-30-01.5-S-08-2-K-TR](#) [LPAM-40-01.0-S-06-2-K-TR](#) [LPAM-30-01.0-L-08-2-K-TR](#) [LPAM-30-01.0-L-04-2-K-TR](#)  
[LPAM-40-01.5-L-06-2-K-TR](#) [LPAM-30-01.5-S-04-2-K-TR](#) [LPAM-10-01.5-L-06-2-K-TR](#) [LPAM-30-01.0-S-06-2-K-TR](#)  
[LPAM-10-01.0-S-06-2-K-TR](#) [LPAM-10-01.5-S-06-2-K-TR](#) [LPAM-20-01.5-S-06-2-K-TR](#) [LPAM-30-01.0-S-04-2-K-TR](#)  
[LPAM-20-01.5-L-08-2-K-TR](#) [LPAM-40-01.0-L-08-2-K-TR](#) [LPAM-30-01.5-L-04-2-K-TR](#) [LPAM-30-01.5-L-08-2-K-TR](#)  
[LPAM-20-01.5-S-04-2-K-TR](#) [LPAM-10-01.5-L-04-2-K-TR](#) [LPAM-20-01.0-L-06-2-K-TR](#) [LPAM-30-01.5-S-06-2-K-TR](#)  
[LPAM-20-01.5-L-06-2-K-TR](#) [LPAM-10-01.0-S-04-2-K-TR](#) [LPAM-10-01.5-S-04-2-K-TR](#) [LPAM-20-01.0-S-06-2-K-TR](#)  
[LPAM-10-01.0-L-06-2-K-TR](#) [LPAM-20-01.0-S-04-2-K-TR](#) [LPAM-20-01.5-L-04-2-K-TR](#) [LPAM-50-01.0-L-08-2-K-TR](#)