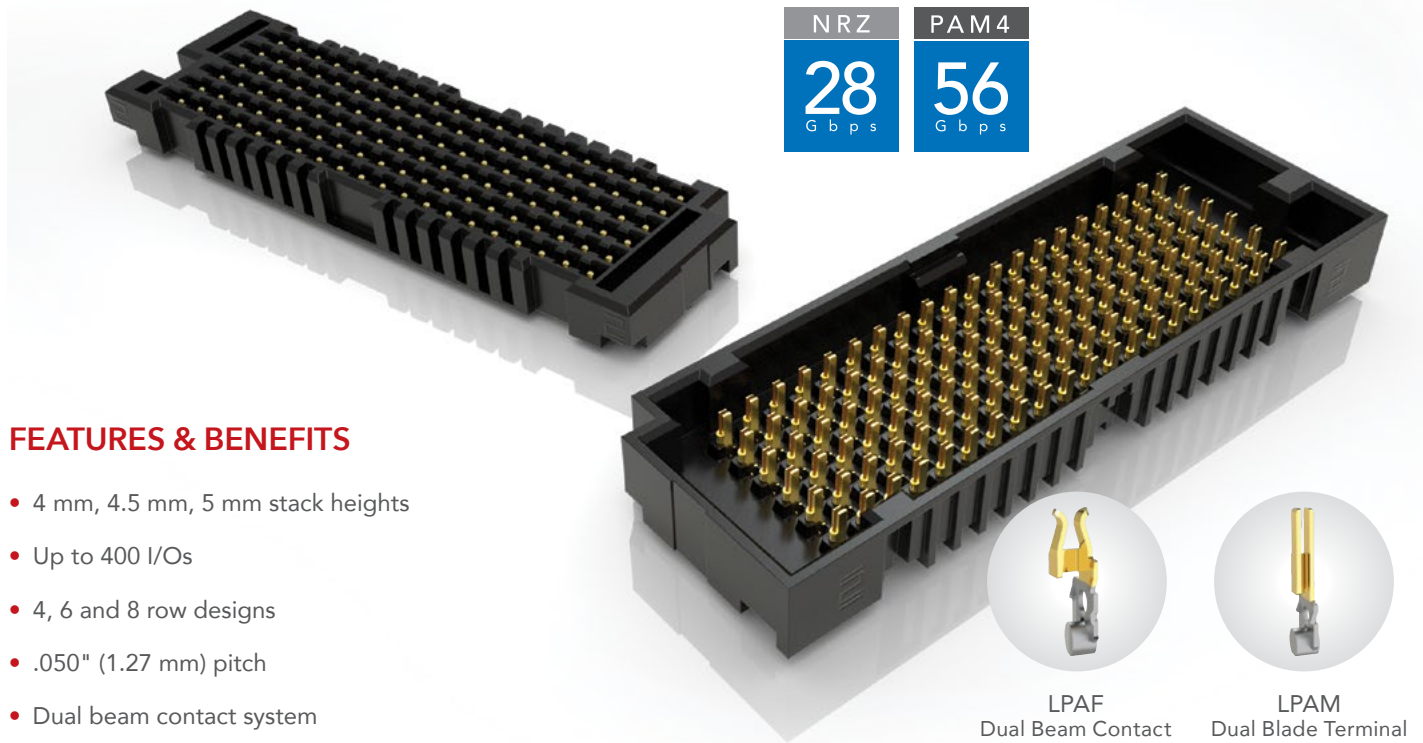


LPARRAY™

LOW-PROFILE OPEN-PIN-FIELD ARRAYS

(1.27 mm) .050" PITCH



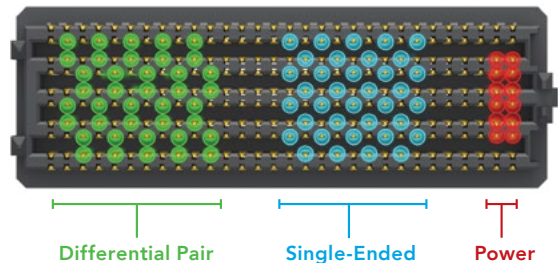
FEATURES & BENEFITS

- 4 mm, 4.5 mm, 5 mm stack heights
- Up to 400 I/Os
- 4, 6 and 8 row designs
- .050" (1.27 mm) pitch
- Dual beam contact system
- Solder crimp termination for ease of processing
- Board stacking standoffs available to assist unmating and reduce risk for component damage on board



LPAM Series; 120 pins
(actual size shown)

MAXIMUM GROUNDING & ROUTING FLEXIBILITY



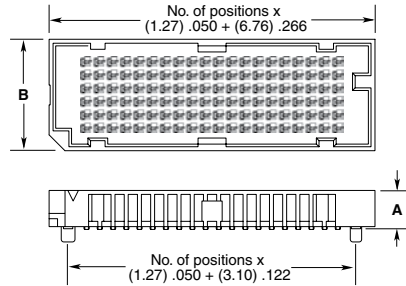
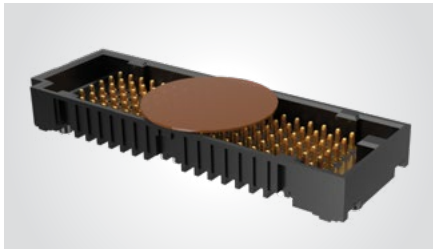
KEY SPECIFICATIONS

PITCH	TOTAL PINS	INSULATOR MATERIAL	CONTACT MATERIAL	PLATING	CURRENT RATING	WORKING VOLTAGE	LEAD-FREE SOLDERABLE
1.27 mm x 1.27 mm	Up to 400 I/Os	Black LCP	Copper Alloy	Au or Sn over 50 μ" (1.27 μm) Ni	2.2 A per pin (8 adjacent pins powered)	250 VAC	YES

(1.27 mm) .050" PITCH • LOW-PROFILE OPEN-PIN-FIELD ARRAYS

SERIES	NO. PINS PER ROW	LEAD STYLE	PLATING OPTION	NO. OF ROWS	SOLDER TYPE	K	"X"R
LPAM Terminal	-10, -20, -30, -40,	-01.0 = (1.0 mm) .039" (LPAM only)	-L = 10 μ" (0.25 μm) Gold on contact area, Matte Tin on solder tail	-04 -06 -08	-1 = Tin/Lead Alloy Solder Crimp		-K = Polyimide film Pick & Place Pad
LPAF Socket	-50 (-08 rows only)	-01.5 = (1.5 mm) .060" (LPAM only)	-S = 30 μ" (0.76 μm) Gold on contact area, Matt Tin on solder tail		-2 = Lead-Free Solder Crimp		-TR =Tape & Reel
		-03.0 = (3.0 mm) .118" (LPAF only)					-FR =Full Reel Tape & Reel (must order max. quantity per reel; contact Samtec for quantity breaks)
		-03.5 = (3.5 mm) .138" (LPAF only)					

LPAM
Board Mates:
LPAF
Standoffs:
JSO, SO

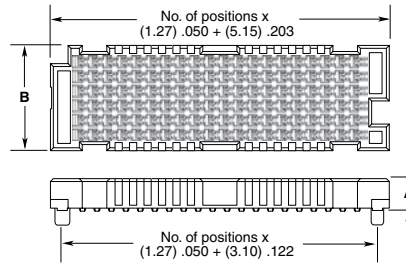
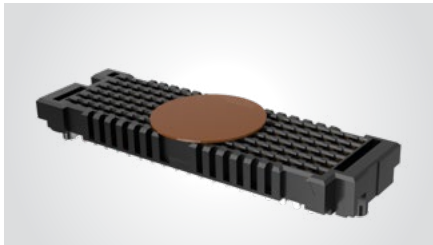


NO. OF ROWS	B
-04	(8.18) .322
-06	(10.72) .422
-08	(13.26) .522

LEAD STYLE	A
-01.0	(3.68) .145
-01.5	(4.19) .165

View complete specifications at: samtec.com?LPAM

LPAF
Board Mates:
LPAM
Standoffs:
JSO, SO



NO. OF ROWS	B
-04	(6.71) .264
-06	(9.25) .364
-08	(11.79) .464

LEAD STYLE	A
-03.0	(2.79) .110
-03.5	(3.30) .130

MATED HEIGHTS*		
LPAM LEAD STYLE	LPAF LEAD STYLE	
	-03.0	-03.5
-01.0	(4.00) .157	(4.50) .177
-01.5	(4.50) .177	(5.00) .197

*Processing conditions will affect mated height.

Notes:
Some sizes, styles and options are non-standard, non-returnable

View complete specifications at: samtec.com?LPAF

Mouser Electronics

Authorized Distributor

Click to View Pricing, Inventory, Delivery & Lifecycle Information:

Samtec:

[LPAF-20-03.5-L-04-2-K-TR](#) [LPAF-10-03.0-L-04-2-K-TR](#) [LPAF-40-03.5-S-08-2-K-TR](#) [LPAF-40-03.0-L-06-2-K-TR](#)
[LPAF-30-03.0-L-04-2-K-TR](#) [LPAF-30-03.0-L-06-2-K-TR](#) [LPAF-30-03.5-L-06-2-K-TR](#) [LPAF-10-03.0-L-06-1-K-TR](#) [LPAF-](#)
[30-03.0-L-08-1-K-TR](#) [LPAF-10-03.5-S-04-2-K-TR](#) [LPAF-20-03.5-L-06-2-K-TR](#) [LPAF-10-03.5-L-06-2-K-TR](#) [LPAF-20-](#)
[03.5-S-06-2-K-TR](#) [LPAF-30-03.0-S-04-2-K-TR](#) [LPAF-20-03.0-S-06-2-K-TR](#) [LPAF-20-03.0-L-06-2-K-TR](#) [LPAF-30-03.5-](#)
[L-04-2-K-TR](#) [LPAF-10-03.5-L-04-2-K-TR](#) [LPAF-10-03.0-S-06-2-K-TR](#) [LPAF-10-03.5-S-06-2-K-TR](#) [LPAF-40-03.5-L-06-](#)
[2-K-TR](#) [LPAF-30-03.5-S-04-2-K-TR](#) [LPAF-40-03.0-L-08-2-K-TR](#) [LPAF-20-03.0-L-04-2-K-TR](#) [LPAF-40-03.5-L-08-2-K-](#)
[TR](#) [LPAF-10-03.0-L-06-2-K-TR](#) [LPAF-20-03.5-S-04-2-K-TR](#) [LPAF-40-03.0-S-08-2-K-TR](#) [LPAF-30-03.5-S-06-2-K-TR](#)
[LPAF-30-03.0-S-06-2-K-TR](#) [LPAF-10-03.0-S-04-2-K-TR](#) [LPAF-20-03.0-S-04-2-K-TR](#) [LPAF-20-03.5-S-08-2-K-TR](#)
[LPAF-40-03.0-S-06-2-K-TR](#) [LPAF-10-03.0-L-04-1-K-TR](#) [LPAF-40-03.5-L-08-1-K-TR](#) [LPAF-30-03.0-L-08-2-K-TR](#)
[LPAF-30-03.5-L-08-2-K-TR](#) [LPAF-10-03.5-S-04-1-K-TR](#) [LPAF-20-03.0-S-08-2-K-TR](#) [LPAF-20-03.0-L-08-2-K-TR](#)
[LPAF-30-03.0-S-08-2-K-TR](#) [LPAF-20-03.5-L-08-2-K-TR](#) [LPAF-40-03.0-L-04-2-K-TR](#) [LPAF-10-03.0-L-08-2-K-TR](#)
[LPAF-40-03.0-L-08-1-K-TR](#) [LPAF-40-03.5-L-04-2-K-TR](#) [LPAF-40-03.5-S-04-2-K-TR](#) [LPAF-50-03.0-L-08-2-K-TR](#)
[LPAF-50-03.5-L-08-2-K-TR](#) [LPAF-10-03.0-S-04-1-K-TR](#)