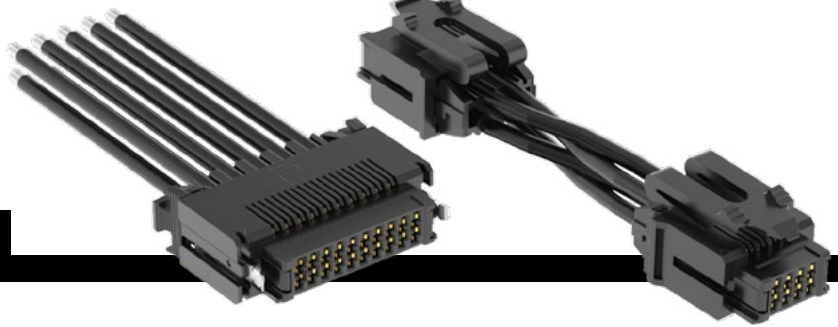


# ULTRA MICRO POWER CABLE



SERIES	NO. OF POSITIONS	PLATING OPTION	WIRE GAUGE	LATCH OPTION	LENGTH	PINOUT
<b>UMPC</b> = Ultra Micro PVC Cable  <b>UMPC(T)</b> = Ultra Micro Blue *Teflon™ Fluoropolymer Cable  <b>UMPC(T)</b> Board Mates: UMPT (Plastic (-P) or metal (-M) latch required)	<b>-02, -03, -04, -05, -06, -07, -08, -09, -10</b>	<b>-L</b> = 10 μ" (0.25 μm) Gold on contact, Tin on tail  <b>-S</b> = 30 μ" (0.76 μm) Gold on contact, Tin on tail  <b>-T</b> = Tin	<b>-16</b> = 16 AWG  <b>-16C</b> = Color Coded Cable (UMPC only)  <b>-18</b> = 18 AWG  <b>-18C</b> = Color Coded Cable (UMPC only)	(Latching required)  <b>-P</b> = Plastic top latch  <b>-M</b> = Metal side latches	<b>- "XX.X"</b> = Assembled Length in Inches  PVC Cable Single ended = (76.2 mm) 03.0" min. Double ended = (101.6 mm) 04.0" min. (2-4 positions) Double ended = (127.0 mm) 05.0" min. (5-10 positions)  Teflon™ Fluoropolymer Double ended = (228.6 mm) 09.0" min. (2-4 positions) Double ended = (254.0 mm) 10.0" min. (5-10 positions)	(Leave blank for Single ended)  <b>-1</b> = Pin 01 to Pin 01  <b>-2</b> = Pin 01 to Pin N

## SPECIFICATIONS

### Insulator Material:

Black LCP

### Contact Material:

Copper Alloy

### Plating:

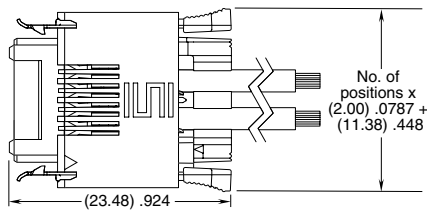
Sn or Au over 50 μ" (1.27 μm) Ni

### Wire:

16 or 18 AWG

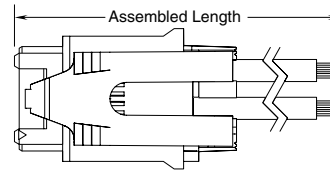
### Voltage Rating:

300V PVC



UMPC-04-X-XX-M-XX.X SHOWN

UMPC/UMPT (TIN PLATING)	
PINS	CURRENT RATING (PER CONTACT)
1	16.8 A
2	14.6 A
3	12.6 A
4	11.6 A
10	8.8 A



UMPC-03-X-XX-P-XX.X SHOWN

View complete specifications at: [samtec.com?UMPC](http://samtec.com?UMPC) & [samtec.com?UMPT](http://samtec.com?UMPT)

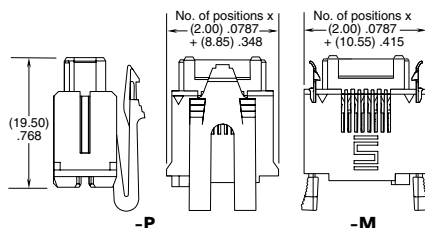
CABLE COLOR CODING	
PIN	COLOR
1	BROWN
2	RED
3	ORANGE
4	YELLOW
5	GREEN
6	BLUE
7	VIOLET
8	GRAY
9	WHITE
10	BLACK

\*Teflon™ is a trademark of The Chemours Company FC, LLC used under license by Samtec.

**Note:** For wiring option information refer to drawings on web.

## UMPC CABLE HOLDER (Required for use with IMPC)

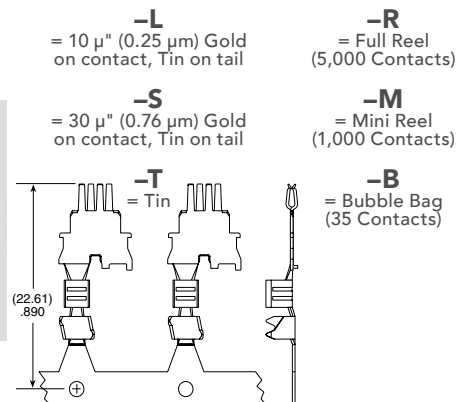
SERIES	NUMBER OF POSITIONS	LEAD STYLE
IMPC	-02, -03, -04, -05, -06, -07, -08, -09, -10	01= 16 AWG
		02= 18 AWG



-P

-M

CC489	01	PLATING	PACKAGING
-------	----	---------	-----------



## TOOLING

Hand Tool: CAT-HT-489-1618-13

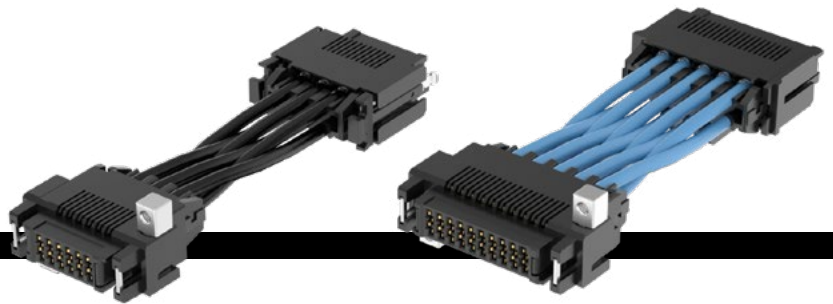
Mini Applicator: CAT-MC-489-1618-XX-01

### Note:

Some lengths, styles and options are non-standard, non-returnable.

View complete specifications at: [samtec.com?IMPC](http://samtec.com?IMPC) & [samtec.com?CC489](http://samtec.com?CC489)

# ULTRA MICRO CABLE-TO-CABLE

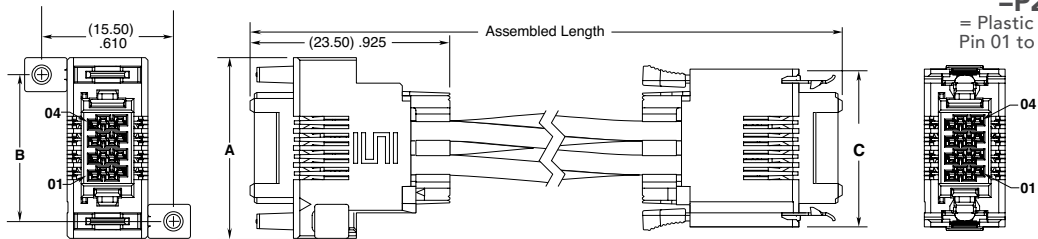


SERIES	NO. OF POSITIONS	PLATING OPTION	WIRE GAUGE	LENGTH	PINOUT
<b>UMPI</b> = Ultra Micro PVC Cable  <b>UMPT</b> = Ultra Micro Blue *Teflon Fluoropolymer Cable	<b>-02, -03, -04, -05, -06, -07, -08, -09, -10</b>	<b>-L</b> = 10 $\mu$ " (0.25 $\mu$ m) Gold on contact, Tin on tail  <b>-S</b> = 30 $\mu$ " (0.76 $\mu$ m) Gold on contact, Tin on tail  <b>-T</b> = Tin	<b>-16</b> = 16 AWG  <b>-16C</b> = 16C AWG Color Coded Cable (not available with UMPT)  <b>-18</b> = 18 AWG  <b>-18C</b> = 18C AWG Color Coded Cable (not available with UMPT)	<b>-"XX.X"</b> = Assembled Length in Inches  Single ended = (76.2 mm) 03.0" min.  Double ended = (101.6 mm) 04.0" min. (2-4 positions)  Double ended = (127.0 mm) 05.0" min. (5-10 positions)	(Leave blank for Single ended)  <b>-M1</b> = Metal Latch Pin 01 to Pin 01  <b>-M2</b> = Metal Latch Pin 01 to Pin N  <b>-P1</b> = Plastic Latch Pin 01 to Pin 01  <b>-P2</b> = Plastic Latch Pin 01 to Pin N

**UMPT(T)**  
Cable Mates:  
UMPE(T)  
End 2 Mates:  
UMPE(T), UMPT

## SPECIFICATIONS

**Insulator Material:**  
Black LCP  
**Contact Material:**  
Copper Alloy  
**Plating:**  
Sn or Au over 50  $\mu$ " (1.27  $\mu$ m) Ni  
**Wire:**  
16 or 18 AWG  
**Voltage Rating:**  
UMPI = 300 V  
UMPT (16 AWG) = 600 V  
UMPT (18 AWG) = 300 V



CABLE COLOR CODING	
PIN	COLOR
1	BROWN
2	RED
3	ORANGE
4	YELLOW
5	GREEN
6	BLUE
7	VIOLET
8	GRAY
9	WHITE
10	BLACK

NO. OF POSITIONS	A	B	C
-02	(17.25) .679	(13.25) .522	(14.55) .573
-03	(19.25) .758	(15.25) .600	(16.55) .652
-04	(21.25) .837	(17.25) .679	(18.55) .730
-05	(23.25) .915	(19.25) .758	(20.55) .809
-06	(25.25) .994	(21.25) .837	(22.55) .888
-07	(27.25) 1.073	(23.25) .915	(24.55) .967
-08	(29.25) 1.152	(25.25) .994	(26.55) 1.045
-09	(31.25) 1.230	(27.25) 1.073	(28.55) 1.124
-10	(33.25) 1.309	(29.25) 1.152	(30.55) 1.203

\*Teflon™ is a trademark of The Chemours Company FC, LLC used under license by Samtec.

**Notes:**  
Teflon™ Fluoropolymer cable is intended for crimp only. Contact Samtec for solderable cable applications.

For wiring option information refer to drawings on web.

Some lengths, styles and options are non-standard, non-returnable

View complete specifications at: [samtec.com?UMPI](http://samtec.com?UMPI) & [samtec.com?UMPT](http://samtec.com?UMPT)

## UMPI CABLE HOLDER (Required for use with IMPC)

SERIES	NUMBER OF POSITIONS	LEAD STYLE
IMPC	-02, -03, -04, -05, -06, -07, -08, -09, -10	01 = 16 AWG
		02 = 18 AWG

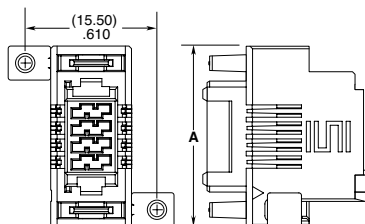
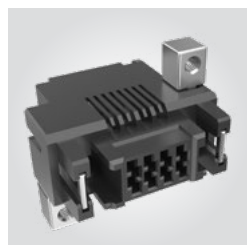
## IMPC

## NO. OF POSITIONS

**-02, -03, -04, -05, -06, -07, -08, -09, -10**

## LATCH OPTION

**-P1**  
= Panel Mount



## CC489

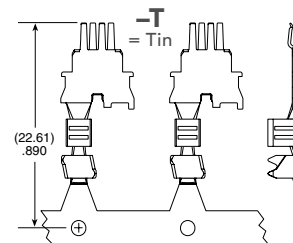
## 01

## PLATING

## PACKAGING

**-L**  
= 10  $\mu$ " (0.25  $\mu$ m) Gold on contact, Tin on tail

**-S**  
= 30  $\mu$ " (0.76  $\mu$ m) Gold on contact, Tin on tail



**-R**  
= Full Reel (5,000 Contacts)

**-M**  
= Mini Reel (1,000 Contacts)

**-B**  
= Bubble Bag (35 Contacts)

## TOOLING

Hand Tool: CAT-HT-489-1618-13

Mini Applicator: CAT-MC-489-1618-XX-01

**Note:**  
Some lengths, styles and options are non-standard, non-returnable.

View complete specifications at: [samtec.com?IMPC](http://samtec.com?IMPC) & [samtec.com?CC489](http://samtec.com?CC489)

# Mouser Electronics

Authorized Distributor

Click to View Pricing, Inventory, Delivery & Lifecycle Information:

[Samtec:](#)

[IMPCC-09-01](#) [IMPCC-07-02](#) [IMPCC-05-02](#) [IMPCC-07-01](#) [IMPCC-08-02](#) [IMPCC-05-01](#) [IMPCC-09-02](#) [IMPCC-08-01](#)