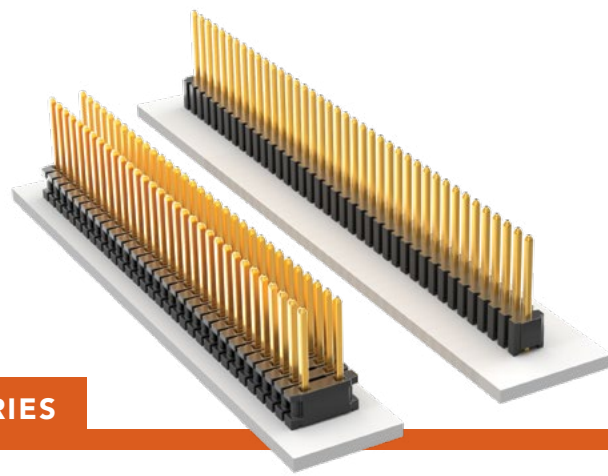


# THROUGH-HOLE MICRO HEADER

(1.27 mm) .050" PITCH • TMS/HTMS SERIES



## TMS/HTMS

**Mates:**  
SMS, SLM, RSM

### SPECIFICATIONS

**Insulator Material:**  
Black Liquid Crystal Polymer  
**Terminal Material:**  
Phosphor Bronze  
**Plating:**  
Au or Sn over  
50  $\mu$ " (1.27  $\mu$ m) Ni  
**Current Rating (TMS/SMS):**  
5 A per pin  
(2 pins powered)  
**Operating Temp Range:**  
-55 °C to +105 °C with Tin;  
-55 °C to +125 °C with Gold

### PROCESSING

**Lead-Free Solderable:**  
Yes

SERIES	1	NO. PINS PER ROW	LEAD STYLE	PLATING OPTION	ROW OPTION	OPTION
TMS = Standard		01 thru 50	Specify LEAD STYLE from chart	-L = 10 $\mu$ " (0.25 $\mu$ m) Gold on post, Matte Tin on tail	-S = Single Row  -D = Double Row	-RA = Right-angle  -"XXX" = Polarized Position (Specify position of omitted pin)

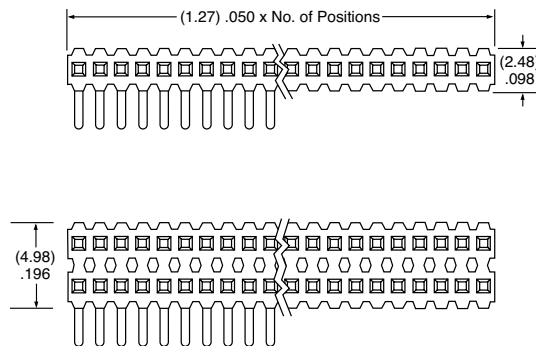
**TMS**  
= Standard  
**HTMS**  
= High Temp

Specify  
**LEAD  
STYLE**  
from  
chart

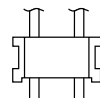
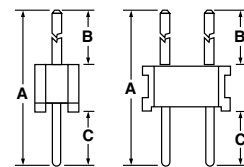
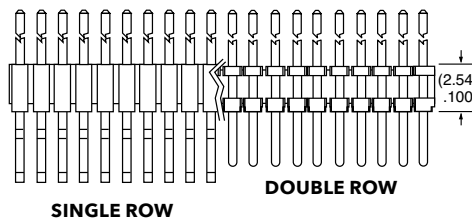
**-L**  
= 10  $\mu$ "  
(0.25  $\mu$ m)  
Gold on post,  
Matte Tin  
on tail  
  
**-G**  
= 10  $\mu$ "  
(0.25  $\mu$ m)  
Gold on post,  
Gold flash  
on tail

**-S**  
= Single  
Row  
  
**-D**  
= Double  
Row

**-RA**  
= Right-angle  
  
-"XXX"  
= Polarized  
Position  
(Specify position  
of omitted pin)



T/H LEAD STYLE	A	B	C
-01	(11.43) .450	(5.84) .230	(3.05) .120
-02	(8.13) .320	(2.54) .100	
-21	(12.83) .505	(5.84) .230	(4.45) .175
-51	(10.41) .410	(4.83) .190	
-52	(10.80) .425	(5.21) .205	
-53	(12.83) .505	(7.24) .285	
-54	(14.10) .555	(8.51) .335	
-55	(15.49) .610	(9.91) .390	(3.05) .120
-56	(15.88) .625	(10.29) .405	
-57	(16.51) .650	(10.92) .430	
-58	(17.91) .705	(12.32) .485	
-59	(19.18) .755	(13.59) .535	
-60	(20.96) .825	(15.37) .605	



**HTMS  
-D  
BODY  
DESIGN**

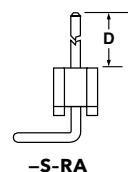
**ALSO AVAILABLE**  
MOQ Required

Other Plating

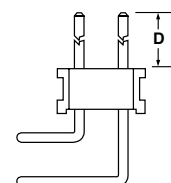
**Important Note:**  
Style -02 does not mate  
with SMS Series.

**Note:**  
Some lengths, styles and  
options are non-standard,  
non-returnable.

RA LEAD STYLE	D
-01	(5.84) .230
-02	(2.54) .100
-03	(3.18) .125



**-S-RA**



**-D-RA**

# Mouser Electronics

Authorized Distributor

Click to View Pricing, Inventory, Delivery & Lifecycle Information:

[Samtec:](#)

[HTMS-150-03-T-D-EM](#)