

DO NOT
SCALE FROM
THIS PRINT

NOTES:

1. C REPRESENTS A CRITICAL DIMENSION.
2. PARTS SHALL BE ROHS COMPLIANT.
3. PARTS TO BE PACKAGED IN TRAYS, TAIL SIDE DOWN.
(LESS THAN FULL TRAY QUANTITIES ARE TO BE PACKAGED IN COVERED TRAYS TRIMMED TO MATCH QUANTITY ORDERED)
4. HDMR FORMERLY NAMED HDMI.
5. DIMENSION APPLIES TO CONTACT & SHIELD.
6. ORDERS WILL BE PACKAGED ACCORDING TO THE SAMTEC PACKAGING EFFICIENCY STANDARDS (SPES) FOUND ON WWW.SAMTEC.COM.
7. ATTACH LABEL TO EACH REEL.

DESIGNED & DIMENSIONED
IN MILLIMETERS[INCHES]

(SEE NOTE 4)

HDMR-XX-XX-X-XX-XX-XX

NO OF POSITIONS

- 19: (SEE SHT 1, FIG. 1)
- 29: (SEE SHT 4)

SHIELD TAIL STYLE

- 01: THROUGH HOLE
- 02: SURFACE MOUNT
(SEE SHT 3, FIG 2)(-19 POS ONLY)

PLATING

- (-19 POSITION)
- S: CONTACT AREA: .000030" GOLD
TAILS: BRIGHT ACID TIN
SHELL: NICKEL
- F: CONTACT AREA: .000001" GOLD
TAILS: BRIGHT ACID TIN
SHELL: NICKEL
- (-29 POSITION)
- S: CONTACT AREA: .000030" GOLD
TAILS: BRIGHT ACID TIN
SHELL: NICKEL
- F: CONTACT AREA: .000001" GOLD
TAILS: BRIGHT ACID TIN
SHELL: NICKEL

PACKAGING

- BLANK: TRAY (SEE NOTES 3 & 6)
- TR: TAPE & REEL (SEE NOTES 6 & 7)
(ONLY AVAILABLE WITHOUT -PF OPTION)
- FR: FULL REEL QTY TAPE & REEL
(SEE NOTES 6 & 7)
(ONLY AVAILABLE WITHOUT -PF OPTION)

OPTION

- PF: PANEL FLANGE (SEE SHT 3, FIG. 4)
- L: LOCKING OPTION(ONLY AVAILABLE
ON HDMR-19-01-X-TH-PF-L, SEE SHT 3, FIG 5
& HDMR-29-01-X-TH-PF-L, SEE SHT 4 FIG 8)

LEAD TERMINATION

- SM: SURFACE MOUNT
- TH: THROUGH HOLE (ONLY AVAILABLE
ON HDMR-19-01-X-TH-PF-L)(SEE SHT 3, FIG 3)

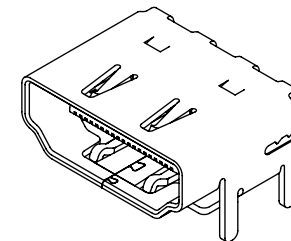
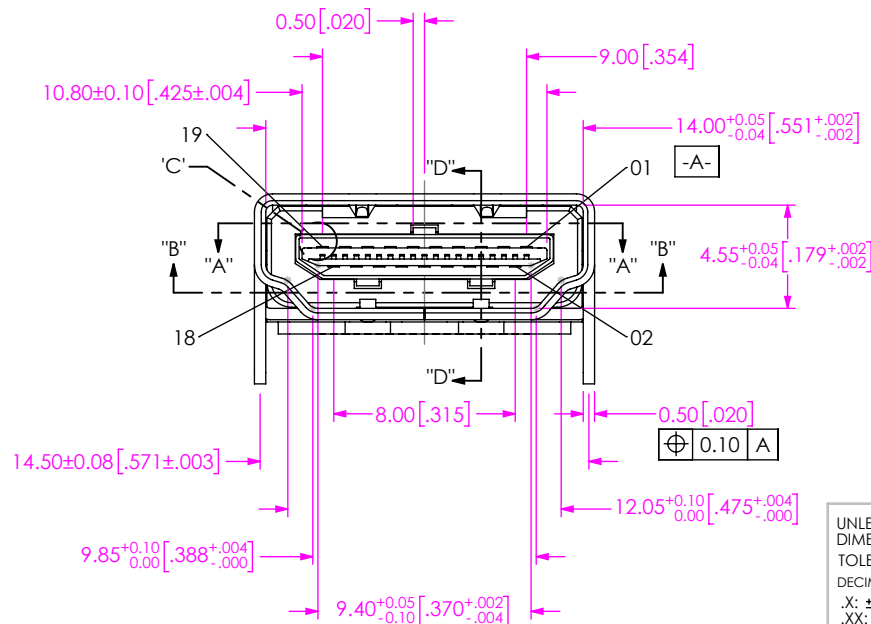
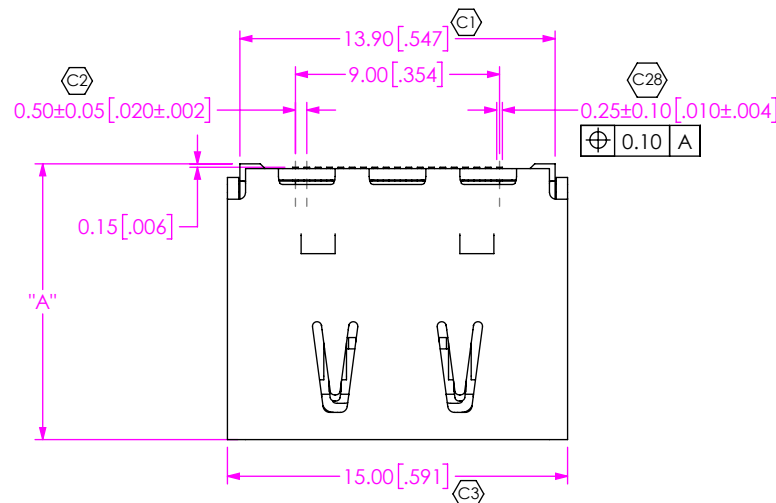
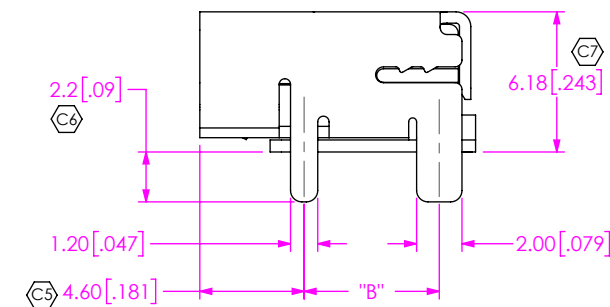


TABLE 1

AVAIL. CONFIGURATIONS	"A"	"B"
HDMR-19-01-X-SM	12.16	5.96
HDMR-19-02-X-SM	12.16	5.96
HDMR-19-01-X-SM-PF	12.16	5.96
HDMR-19-02-X-SM-PF	12.16	5.96
HDMR-19-01-X-TH-PF-L	12.25	6.00
HDMR-29-01-X-SM	SEE SHT 4	
HDMR-29-01-X-SM-PF	SEE SHT 4	

FIG 1
HDMR-19-01-X-SM SHOWN

F:\dwg\misc\mktg\HDMR-XX-XX-X-XX-XX-MKT.SLDDRW

UNLESS OTHERWISE SPECIFIED,
DIMENSIONS ARE IN MM.

TOLERANCES ARE:

DECIMALS

.X: ±0.25[.010]

.XX: ±0.20[.008]

.XXX: ±0.10[.004]

ANGLES

1°

PROPRIETARY NOTE

THIS DOCUMENT CONTAINS CONFIDENTIAL AND PROPRIETARY INFORMATION AND ALL DESIGN, MANUFACTURING, REPRODUCTION, USE, PATENT RIGHTS AND SALES RIGHTS ARE EXPRESSLY RESERVED BY SAMTEC, INC. THIS DOCUMENT SHALL NOT BE DISCLOSED, IN WHOLE OR PART, TO ANY UNAUTHORIZED PERSON OR ENTITY NOR REPRODUCED, TRANSFERRED OR INCORPORATED IN ANY OTHER PROJECT IN ANY MANNER WITHOUT THE EXPRESS WRITTEN CONSENT OF SAMTEC, INC.

DO NOT SCALE DRAWING

SHEET SCALE: 1:0.333333

MATERIAL:

INSULATOR: HIGH TEMP THERMOPLASTIC (UL94V-0)

CONTACT: COPPER ALLOY

SHELL: NICKEL PLATED BRASS

520 PARK EAST BLVD, NEW ALBANY, IN 47150
PHONE: 812-944-6733 FAX: 812-948-5047
e-Mail: info@SAMTEC.com code 55322

DESCRIPTION:

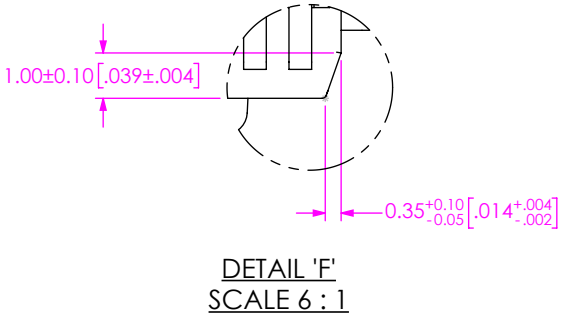
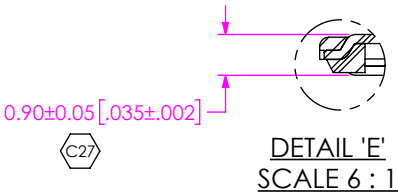
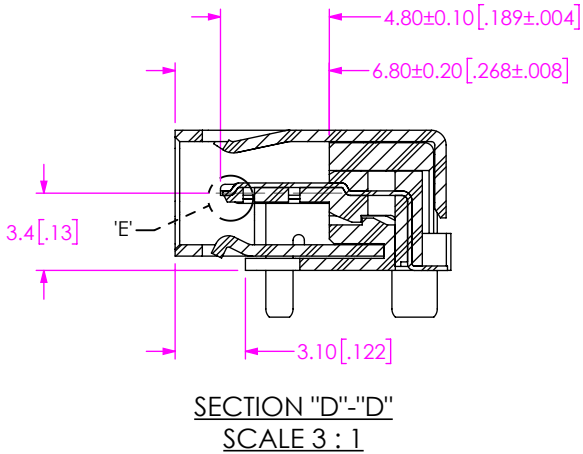
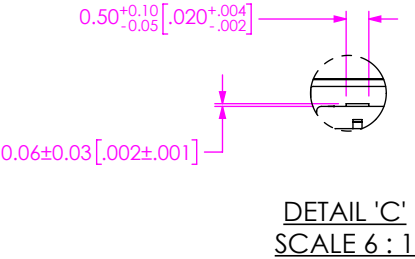
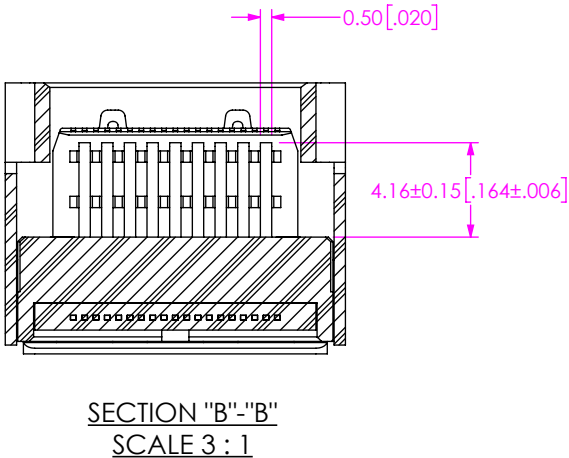
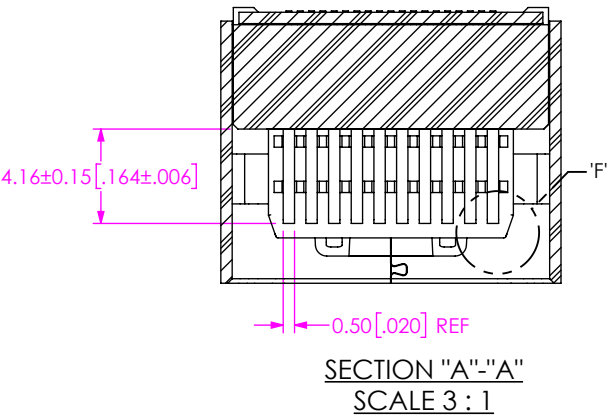
HDMI RECEPTACLE

DWG. NO.

HDMR-XX-XX-X-XX-XX-XX

BY: B. PERRY 9/14/07

SHEET 1 OF 4



<p>• PROPRIETARY NOTE •</p> <p>THIS DOCUMENT CONTAINS CONFIDENTIAL AND PROPRIETARY INFORMATION AND ALL DESIGN, MANUFACTURING, REPRODUCTION, USE, PATENT RIGHTS AND SALES RIGHTS ARE EXPRESSLY RESERVED BY SAMTEC, INC. THIS DOCUMENT SHALL NOT BE DISCLOSED, IN WHOLE OR PART, TO ANY UNAUTHORIZED PERSON OR ENTITY NOR REPRODUCED, TRANSFERRED OR INCORPORATED IN ANY OTHER PROJECT IN ANY MANNER WITHOUT THE EXPRESS WRITTEN CONSENT OF SAMTEC, INC.</p>	
<p>DO NOT SCALE DRAWING</p> <p>SHEET SCALE: 1:0.333333</p>	<p>520 PARK EAST BLVD, NEW ALBANY, IN 47150 PHONE: 812-944-6733 FAX: 812-948-5047 e-Mail info@SAMTEC.com code 55322</p>
	DESCRIPTION: HDMI RECEPTACLE
	DWG. NO. HDMR-XX-XX-X-XX-XX-XX
BY: B. PERRY	9/14/07
SHEET 2 OF 4	

FIG 2
-02 SHIELD TAIL STYLE
(HDMR-19-02-X-SM SHOWN)
(DIFFERENT AS SHOWN, OTHERWISE SAME AS FIG 1))

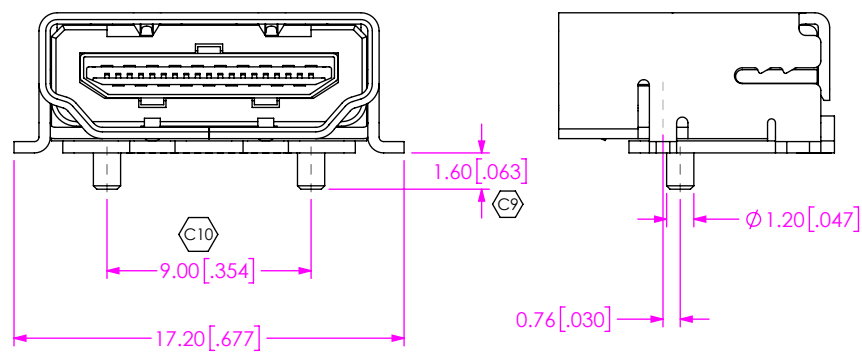


FIG 3
-TH LEAD TERMINATION STYLE
(ONLY AVAILABLE ON HDMR-19-01-X-TH-PF-L)
(DIFFERENT AS SHOWN, OTHERWISE SAME AS FIG 1))

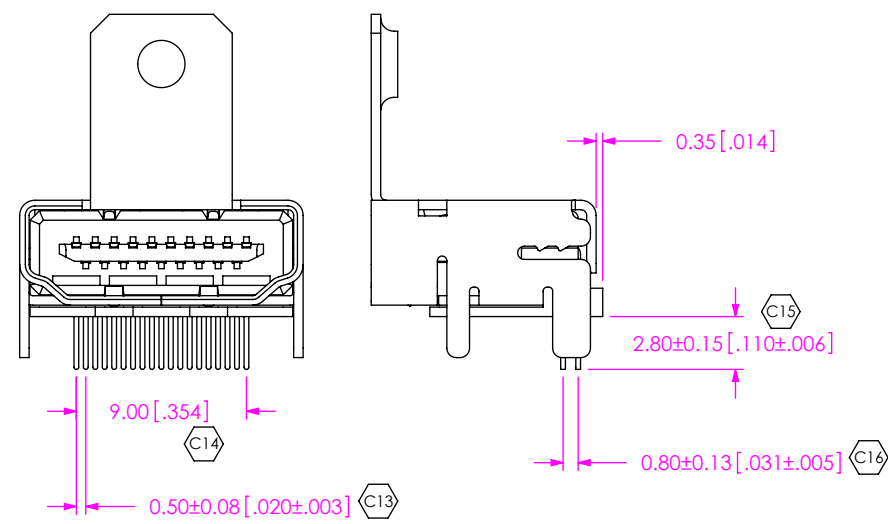
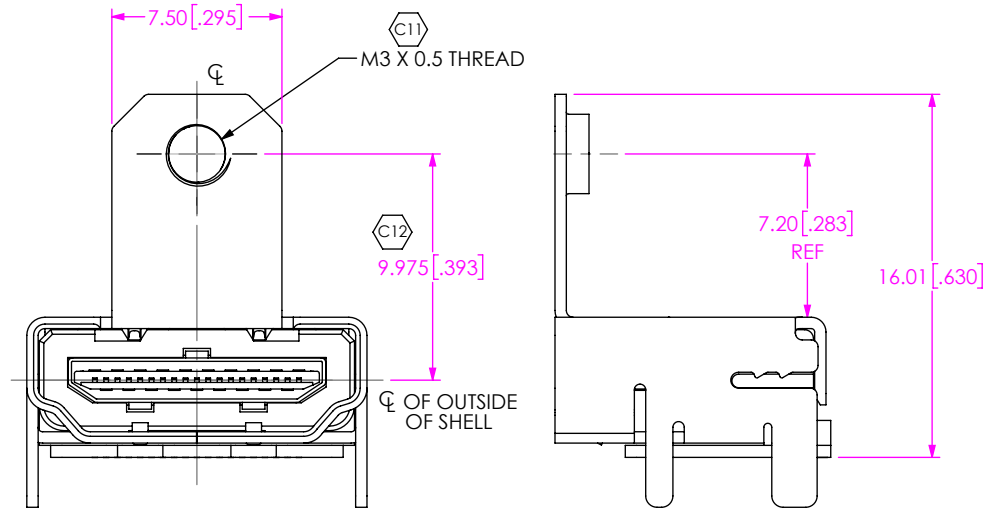
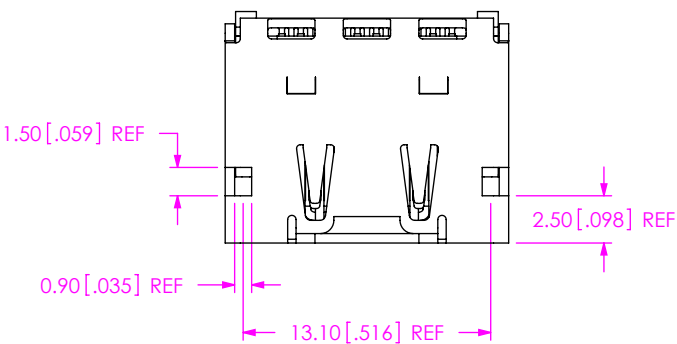



FIG 5
-L: LOCKING LEADS
(ONLY AVAILABLE ON HDMR-19-01-X-TH-PF-L)
(DIFFERENT AS SHOWN, OTHERWISE SAME AS FIG 1))



PROPRIETARY NOTE
THIS DOCUMENT CONTAINS CONFIDENTIAL AND PROPRIETARY INFORMATION AND ALL DESIGN, MANUFACTURING, REPRODUCTION, USE, PATENT RIGHTS AND SALES RIGHTS ARE EXPRESSLY RESERVED BY SAMTEC, INC. THIS DOCUMENT SHALL NOT BE DISCLOSED, IN WHOLE OR PART, TO ANY UNAUTHORIZED PERSON OR ENTITY NOR REPRODUCED, TRANSFERRED OR INCORPORATED IN ANY OTHER PROJECT IN ANY MANNER WITHOUT THE EXPRESS WRITTEN CONSENT OF SAMTEC, INC.

DO NOT SCALE DRAWING

SHEET SCALE: 3:1



520 PARK EAST BLVD, NEW ALBANY, IN 47150
PHONE: 812-944-6733 FAX: 812-948-5047
e-Mail info@SAMTEC.com code 55322

DESCRIPTION:	HDMI RECEPTACLE
DWG. NO.	HDMR-XX-XX-X-XX-XX-XX
BY: B. PERRY	9/14/07
SHEET 3 OF 4	

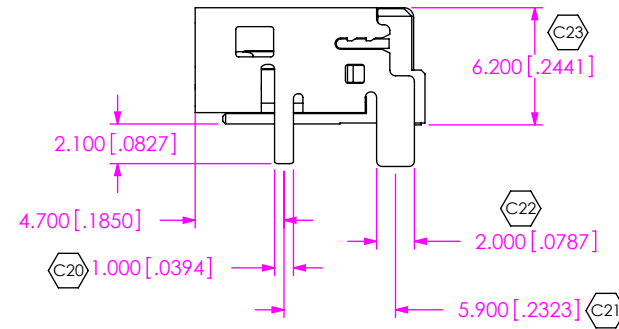
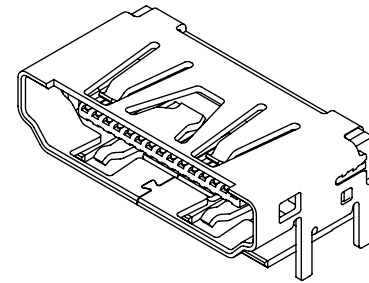
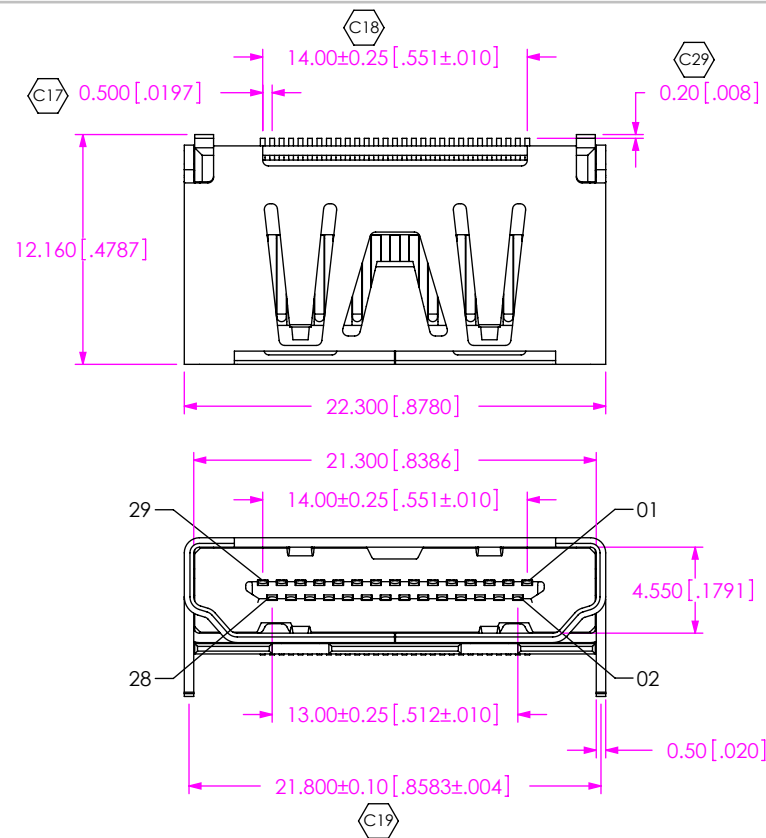
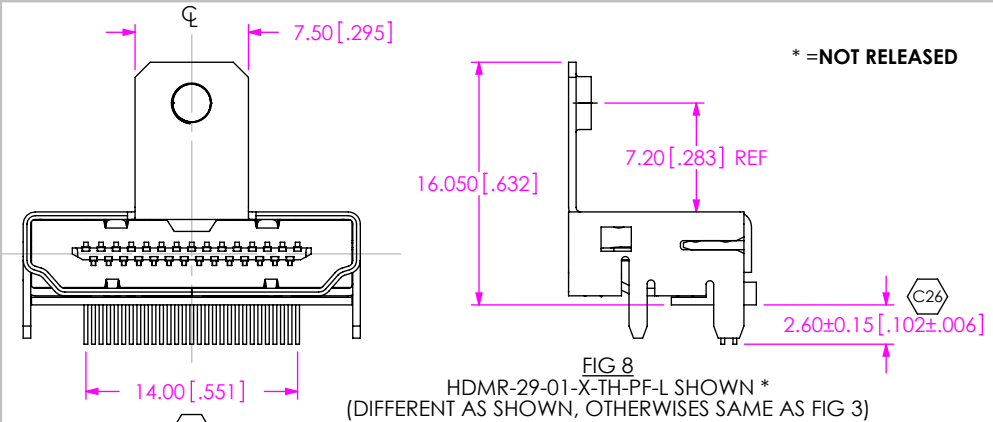
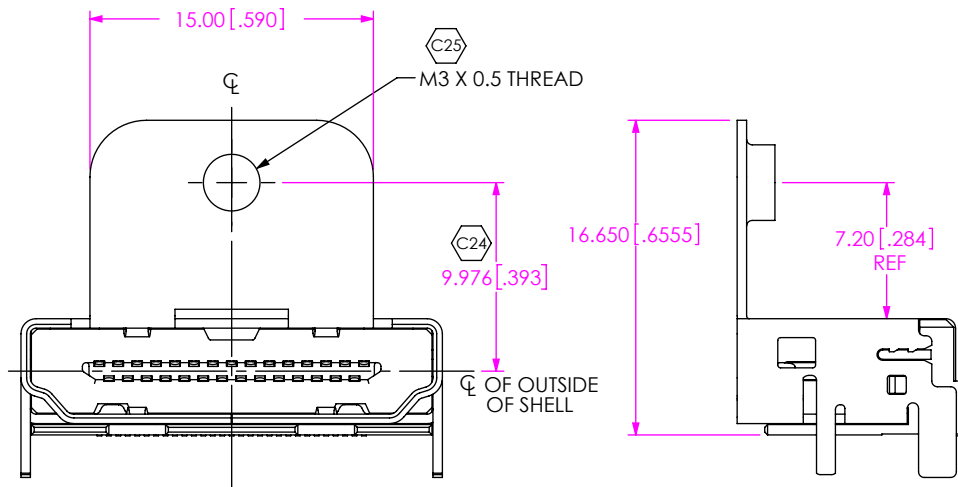


FIG 7
HDMR-29-01-X-SM-PF SHOWN
(DIFFERENT AS SHOWN, OTHERWISE SAME AS FIG 6)



PROPRIETARY NOTE
THIS DOCUMENT CONTAINS CONFIDENTIAL AND PROPRIETARY INFORMATION AND ALL DESIGN, MANUFACTURING, REPRODUCTION, USE, PATENT RIGHTS AND SALES RIGHTS ARE EXPRESSLY RESERVED BY SAMTEC, INC. THIS DOCUMENT SHALL NOT BE DISCLOSED, IN WHOLE OR PART, TO ANY UNAUTHORIZED PERSON OR ENTITY NOR REPRODUCED, TRANSFERRED OR INCORPORATED IN ANY OTHER PROJECT IN ANY MANNER WITHOUT THE EXPRESS WRITTEN CONSENT OF SAMTEC, INC.

DO NOT SCALE DRAWING

SHEET SCALE: 3:1

samtec

520 PARK EAST BLVD, NEW ALBANY, IN 47150
PHONE: 812-944-6733 FAX: 812-948-5047
e-Mail: info@SAMTEC.com code 55322

DESCRIPTION: HDMI RECEPTACLE

DWG. NO. HDMR-XX-XX-X-XX-XX-XX

BY: B. PERRY 9/14/07 SHEET 4 OF 4

Mouser Electronics

Authorized Distributor

Click to View Pricing, Inventory, Delivery & Lifecycle Information:

Samtec:

[HDMR-19-01-F-SM](#) [HDMR-19-02-S-SM-TR](#) [HDMR-19-01-S-SM-TR](#)