

GP-S-01-01

DO NOT
SCALE FROM
THIS PRINT

DESIGNED & DIMENSIONED
IN INCHES[MILLIMETERS]

GPSK-XX-XX-X

SOCKET

LEAD STYLE

-01
-02

SCREW OPTION

-1: USE WITH .062 THICK PCB
-2: USE WITH .093 & .125 THICK PCB
-N: SOCKET ONLY, NO SCREWS INCLUDED
(-1 & -2 SCREW OPTIONS ONLY
AVAILABLE WITH -02 LEAD STYLE)
(SEE NOTE 2)

THREADING

-01: M3 x 0.5

GPSK-01-01 SHOWN

MS-05-02-L

GP-S-02-01

TABLE 1		
	"A"	"B"
MS-03-02-L	.193	.118
MS-04-02-L	.232	.157
MS-05-02-L	.389	.315

TABLE 2		
	"C"	"D"
GP-S-01-01	0.75	.375
GP-S-02-01	1.20	.800

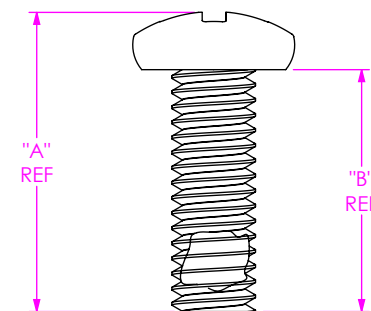


FIG 1
MS-XX-02-L

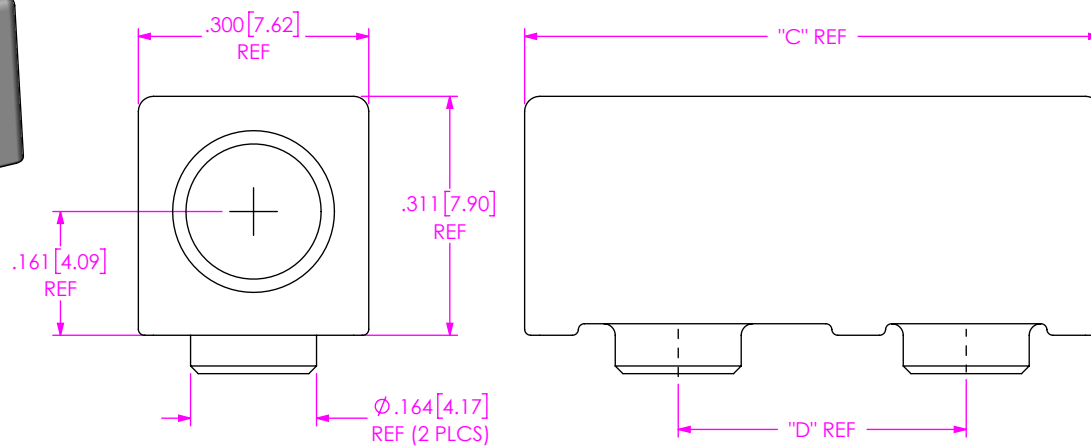


FIG 2
GP-S-XX-01

GPSK-02-01-X SHOWN

NOTES:

- PARTS TO BE PACKAGED IN ZBAG-03.00-04-2.0, KIT WILL HAVE PARTS PACKAGED TOGETHER.
- GPSK-01-01 KIT TO INCLUDE ONE GPSK-S-01-01 AND ONE MS-05-02-L.
GPSK-02-01-1 KIT TO INCLUDE ONE GP-S-02-01, ONE MS-05-02-L AND ONE MS-03-02-L.
GPSK-02-01-2 KIT TO INCLUDE ONE GP-S-02-01, ONE MS-05-02-L AND ONE MS-04-02-L.
- PARTS TO BE USED WITH PCB THICKNESSES OF .062 TO .125.

UNLESS OTHERWISE SPECIFIED,
DIMENSIONS ARE IN INCHES.

TOLERANCES ARE:

DECIMALS ANGLES
.XX: $\pm .01$ [.3] 2°
.XXX: $\pm .005$ [.13]
.XXXX: $\pm .0020$ [.051]

PROPRIETARY NOTE

THIS DOCUMENT CONTAINS CONFIDENTIAL AND
PROPRIETARY INFORMATION AND ALL DESIGN,
MANUFACTURING, REPRODUCTION, USE, PATENT RIGHTS
AND SALES RIGHTS ARE EXPRESSLY RESERVED BY SAMTEC,
INC. THIS DOCUMENT SHALL NOT BE DISCLOSED, IN WHOLE
OR PART, TO ANY UNAUTHORIZED PERSON OR ENTITY NOR
REPRODUCED, TRANSFERRED OR INCORPORATED IN ANY
OTHER PROJECT IN ANY MANNER WITHOUT THE EXPRESS
WRITTEN CONSENT OF SAMTEC, INC.

MATERIAL: DO NOT SCALE DRAWING

SOCKET: ZAMAK 3
SCREW: 303 STAINLESS STEEL

SHEET SCALE: 3:1

DESCRIPTION:

samtec

520 PARK EAST BLVD, NEW ALBANY, IN 47150
PHONE: 812-944-6733 FAX: 812-948-5047
e-Mail: info@SAMTEC.com code 55322

SUREWARE RA SOCKET

DWG. NO.

GPSK-XX-XX-X

BY: VICKY Z 12/23/2010 SHEET 1 OF 1

Mouser Electronics

Authorized Distributor

Click to View Pricing, Inventory, Delivery & Lifecycle Information:

[Samtec:](#)

[GPSK-01-01](#) [GPSK-02-01-1](#) [GPSK-02-01-2](#)