

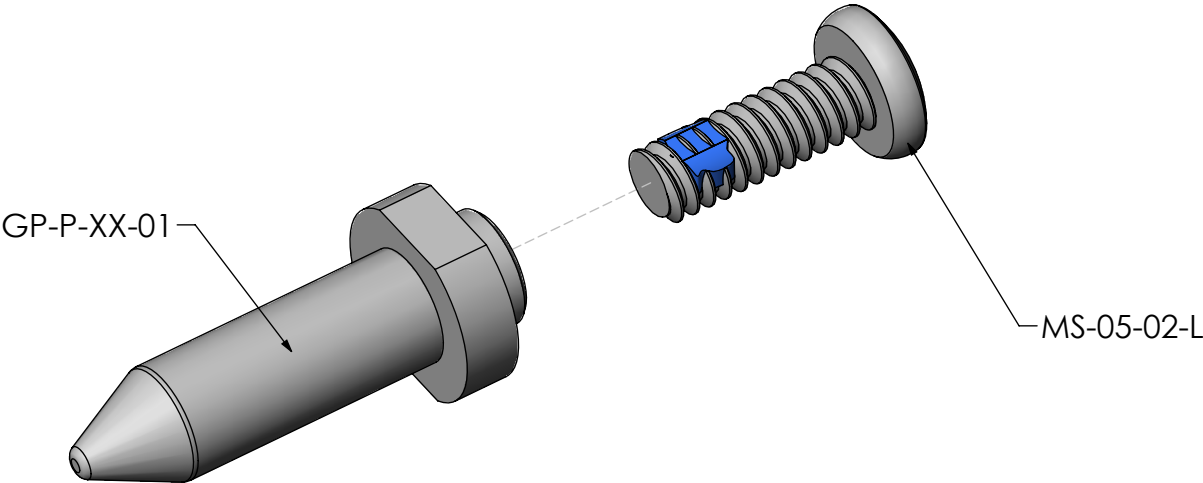
DO NOT
SCALE FROM
THIS PRINT

DESIGNED & DIMENSIONED
IN INCHES[MILLIMETERS]

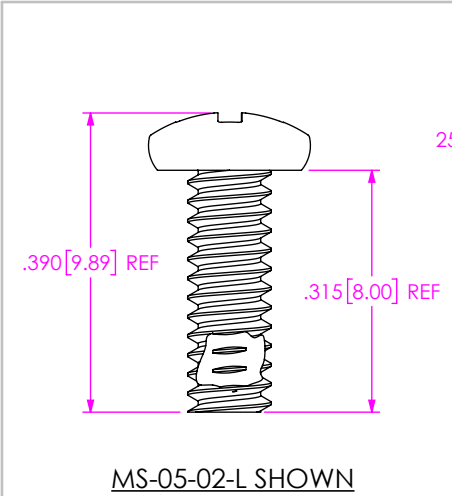
GPPK-XX-XX

LEAD STYLE
-01: .600
(USE GP-P-01-01)
-02: .930
(USE GP-P-02-01)

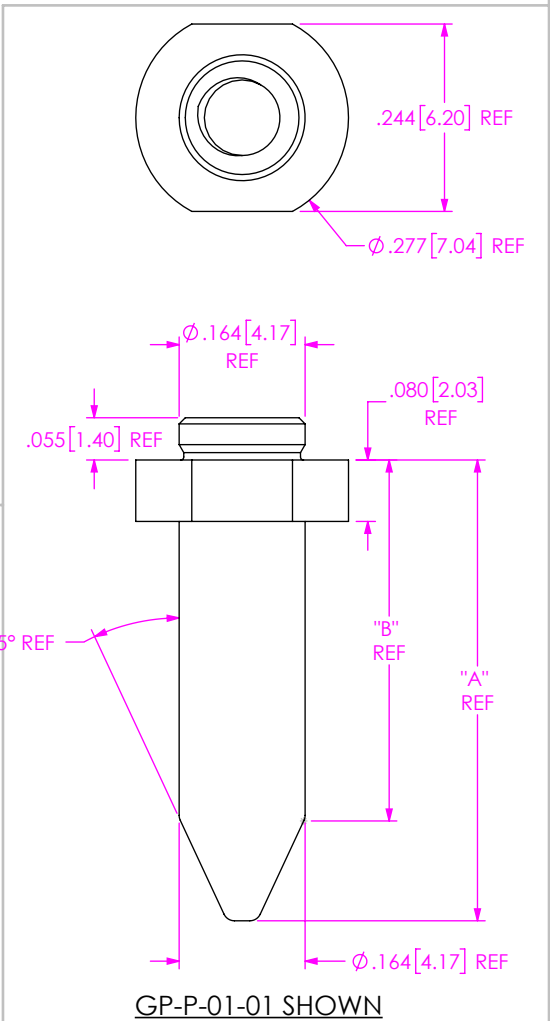
PLUG
THREADING
-01: M3 x 0.5



| TABLE 1 | | |
|------------|------|------|
| LEAD STYLE | "A" | "B" |
| -01 | .600 | .470 |
| -02 | .930 | .800 |



MS-05-02-L SHOWN



GP-P-01-01 SHOWN

- NOTES:
- 1. PARTS TO BE PACKAGED IN ZBAG-03.00-04-2.0 AS A KIT.
 - 2. KIT TO INCLUDE ONE GP-P-XX-01 AND ONE MS-05-02-L.

UNLESS OTHERWISE SPECIFIED, DIMENSIONS ARE IN INCHES. TOLERANCES ARE:

| | |
|----------------------|--------|
| DECIMALS | ANGLES |
| .XX: ±.01 [.3] | 2° |
| .XXX: ±.005 [.13] | |
| .XXXX: ±.0020 [.051] | |

MATERIAL: DO NOT SCALE DRAWING SHEET SCALE: 2:1
GUIDE POST: SUS-301
SCREW: 303 STAINLESS STEEL

PROPRIETARY NOTE
THIS DOCUMENT CONTAINS INFORMATION CONFIDENTIAL AND PROPRIETARY TO SAMTEC, INC. AND SHALL NOT BE REPRODUCED OR TRANSFERRED TO OTHER DOCUMENTS OR DISCLOSED TO OTHERS OR USED FOR ANY PURPOSE OTHER THAN THAT WHICH IT WAS OBTAINED WITHOUT THE EXPRESSED WRITTEN CONSENT OF SAMTEC, INC.

samtec
520 PARK EAST BLVD, NEW ALBANY, IN 47150
PHONE: 812-944-6733 FAX: 812-948-5047
e-Mail: info@SAMTEC.com code 55322

DESCRIPTION: SUREWARE RA GUIDE POST

DWG. NO. GPPK-XX-XX

BY: VICKY Z 12/23/2010 SHEET 1 OF 1

Mouser Electronics

Authorized Distributor

Click to View Pricing, Inventory, Delivery & Lifecycle Information:

[Samtec:](#)

[GPPK-01-01](#) [GPPK-02-01](#)