

DESIGNED & DIMENSIONED
IN INCHES[MILLIMETERS]

DO NOT
SCALE FROM
THIS PRINT

GPPK-XX-XX

LEAD STYLE
-01: .600 (FOR SEAM)
(USE GP-P-01-01)
-02: .930 (FOR SEAM)
(USE GP-P-02-01)

PLUG
THREADING
-01: M3 x 0.5

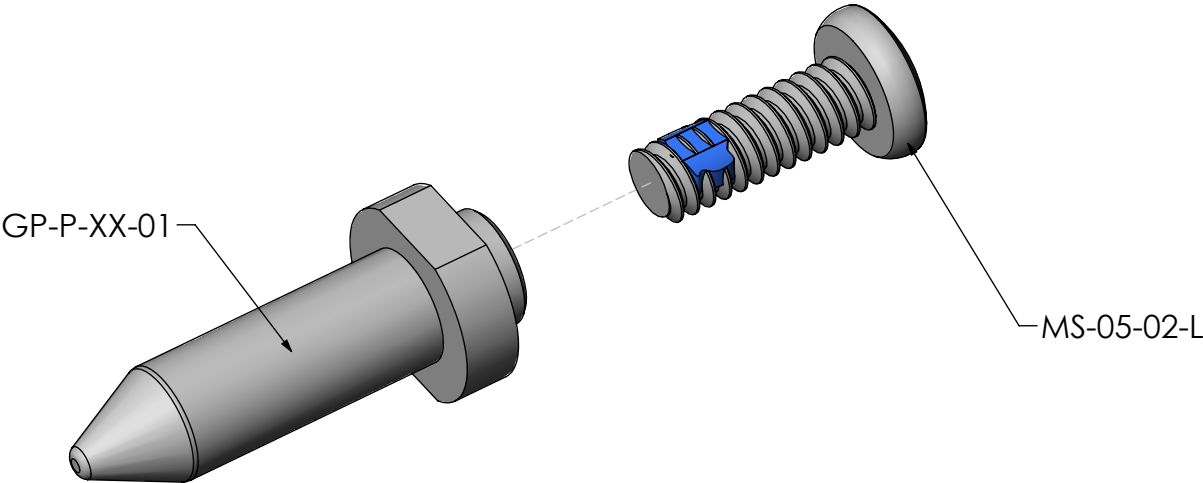
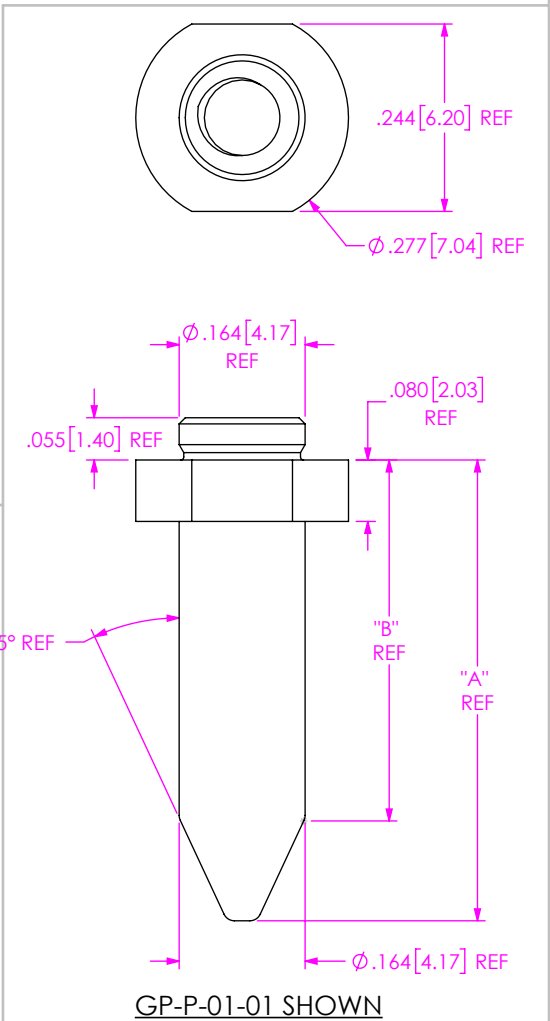
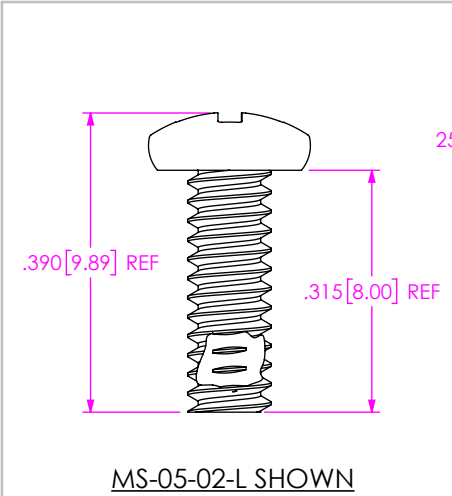


TABLE 1		
LEAD STYLE	"A"	"B"
-01	.600	.470
-02	.930	.800



- NOTES:
- 1. PARTS TO BE PACKAGED IN ZBAG-03.00-04-2.0 AS A KIT.
 - 2. KIT TO INCLUDE ONE GP-P-XX-01 AND ONE MS-05-02-L.

UNLESS OTHERWISE SPECIFIED,
DIMENSIONS ARE IN INCHES.
TOLERANCES ARE:
DECIMALS ANGLES
.XX: ±.01 [.3] 2°
.XXX: ±.005 [.13]
.XXXX: ±.0020 [.051]

PROPRIETARY NOTE
THIS DOCUMENT CONTAINS INFORMATION
CONFIDENTIAL AND PROPRIETARY TO
SAMTEC, INC. AND SHALL NOT BE REPRODUCED
OR TRANSFERRED TO OTHER DOCUMENTS OR
DISCLOSED TO OTHERS OR USED FOR ANY
PURPOSE OTHER THAN THAT WHICH IT WAS
OBTAINED WITHOUT THE EXPRESSED WRITTEN
CONSENT OF SAMTEC, INC.

MATERIAL: DO NOT SCALE DRAWING SHEET SCALE: 2:1
GUIDE POST: SUS-301
SCREW: 303 STAINLESS STEEL

samtec

520 PARK EAST BLVD, NEW ALBANY, IN 47150
PHONE: 812-944-6733 FAX: 812-948-5047
e-Mail: info@SAMTEC.com code 55322

DESCRIPTION: SEAM - GPK OPTION KIT
DWG. NO. GPPK-XX-XX
BY: VICKY Z 12/23/2010 SHEET 1 OF 1

Mouser Electronics

Authorized Distributor

Click to View Pricing, Inventory, Delivery & Lifecycle Information:

[Samtec:](#)

[GPPK-01-01](#) [GPPK-02-01](#)