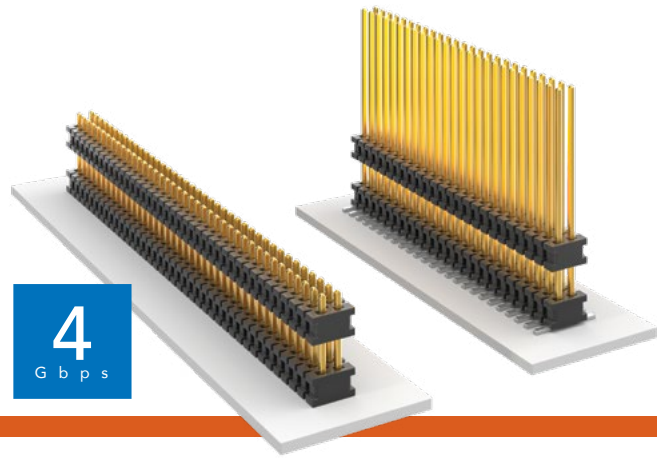


FLEX STACK

MICRO BOARD STACKER

(1.27 mm) .050" PITCH • FW SERIES



FW
Board Mates:
 CLP, FLE
Cable Mates:
 FFSD

FW	NO. OF PINS PER ROW	LEAD STYLE	PLATING OPTION	D	STACKER HEIGHT	POST HEIGHT	OPTION
----	---------------------	------------	----------------	---	----------------	-------------	--------

02 thru 50

Specify LEAD STYLE from chart

-F
 = Gold flash on post, Matte Tin on tail

-L
 = 10 μm (0.25 μm) Gold on post, Matte Tin on tail

-G
 = 10 μm (0.25 μm) Gold on post, Gold flash on tail

-"XXX"
 = Stacker Height (in inches)
 Example: -.250 = (6.35 mm) .250"

-"XXX"
 = Post Height (in inches)
 (1.65 mm) .065" minimum
 Example: -.065 = (1.65 mm) .065"

-ES
 = End Shroud (-075 post height only. Mate only with CLP) (5.46 mm) .215" to (15.49 mm) .610" stacker height only 9 pins/row min.

-EP
 = End Shroud with Guide Post (-075 post height only. Mate only with CLP) (5.46 mm) .215" to (15.49 mm) .610" stacker height only 9 pins/row min.

-A
 = Alignment Pin (3 positions min.) (5.46 mm) .215" to (15.75 mm) .620" stacker height only (SMT only)

-P
 = Pick & Place Pad (5 positions min.) (SMT only)

-TR
 = Tape & Reel (Max overall height = Post+Stacker Height+Pad+Alignment Pin = (17.78) .700") (SMT only)

-FR
 = Full Reel Tape & Reel (must order max. quantity per reel; contact Samtec for quantity breaks) (SMT only)

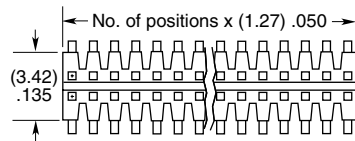
SPECIFICATIONS

Insulator Material:
 Black Liquid Crystal Polymer
Terminal Material:
 Phosphor Bronze
Plating:
 Sn or Au over 50 μm (1.27 μm) Ni
Operating Temp Range:
 -55 °C to +125 °C

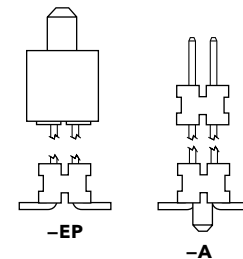
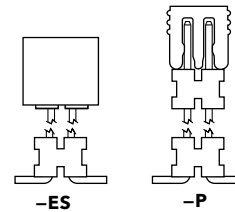
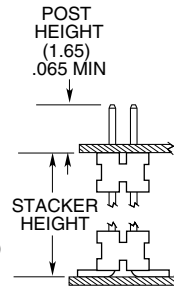
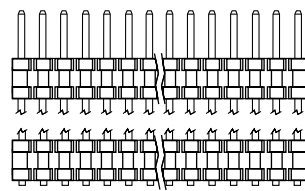
PROCESSING

Lead-Free Solderable:
 Yes
SMT Lead Coplanarity:
 (0.10 mm) .004" max (02-30)
 (0.15 mm) .006" max (31-50)*
 *(.004" stencil solution may be available; contact IPG@samtec.com)

LEAD STYLE	STACKER HEIGHT	STACKER + POST
-03	(5.46) to (8.51) .215 to .335	(7.11) to (10.16) .280 to .400
-05	(8.64) to (15.49) .340 to .610	(10.29) to (17.15) .405 to .675



SURFACE MOUNT



MATED HEIGHT

FW LEAD STYLE	CLP LEAD STYLE	MATED HEIGHT*
FW-XX-03-X-X-233-065	-02	8.13 mm) .329"
FW-XX-03-X-X-303-065		9.91 mm) .390"

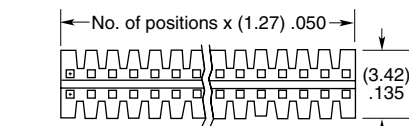
*Processing conditions will affect mated height.

ALSO AVAILABLE

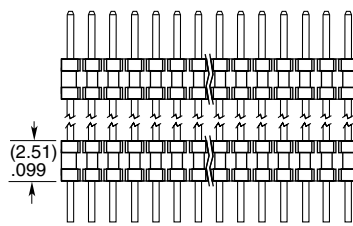
Smaller stack heights (MOQ Required)

Notes:
 For added mechanical stability, Samtec recommends mechanical board spacers be used in applications with gold or selective gold plated connectors. Contact ipg@samtec.com for more information.

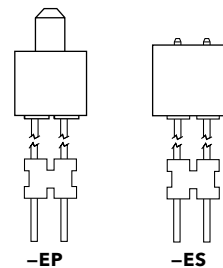
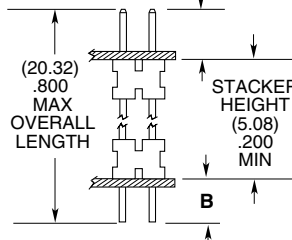
This Series is non-standard, non-returnable.



THROUGH-HOLE



POST HEIGHT (1.65) .065 MIN



LEAD STYLE	TAIL (B)
-01	(1.14) .045
-02	(1.91) .075
-04	(2.29) .090

Mouser Electronics

Authorized Distributor

Click to View Pricing, Inventory, Delivery & Lifecycle Information:

Samtec:

[FW-20-03-G-D-215-175](#) [FW-20-03-G-D-215-180-P](#) [FW-20-03-G-D-223-065](#) [FW-20-03-G-D-223-065-P](#) [FW-20-03-G-D-225-065](#) [FW-20-03-G-D-226-075-ES-A](#) [FW-20-03-G-D-230-065-A](#) [FW-20-03-G-D-233-065](#) [FW-20-03-G-D-233-065-P](#) [FW-20-03-G-D-250-130-A](#) [FW-20-03-G-D-250-140](#) [FW-20-03-G-D-279-075](#) [FW-20-03-G-D-285-080](#) [FW-20-03-G-D-286-080-P](#) [FW-20-03-G-D-313-075-EP-A](#) [FW-20-03-H-D-286-075-EP-A-P-TR](#) [FW-20-03-L-D-085-155](#) [FW-20-03-L-D-085-155-P](#) [FW-20-03-L-D-099-150](#) [FW-20-03-L-D-099-150-P-TR](#) [FW-20-03-L-D-120-160](#) [FW-20-03-L-D-200-151](#) [FW-20-03-L-D-215-120](#) [FW-20-03-L-D-225-065-A](#) [FW-20-03-L-D-230-065](#) [FW-20-03-L-D-230-065-A](#) [FW-20-03-L-D-245-065](#) [FW-20-03-L-D-250-065](#) [FW-20-03-L-D-255-065](#) [FW-20-03-L-D-260-070](#) [FW-20-03-L-D-265-065](#) [FW-20-03-L-D-280-120](#) [FW-20-03-L-D-300-065](#) [FW-20-03-LM-D-215-065](#) [FW-20-03-LM-D-225-140-P-TR](#) [FW-20-03-LM-D-255-140-P-TR](#) [FW-20-04-F-D-200-075](#) [FW-20-04-F-D-400-100](#) [FW-20-04-F-D-515-164](#) [FW-20-04-F-D-530-155](#) [FW-20-04-G-D-320-160](#) [FW-20-04-G-D-330-158](#) [FW-20-04-G-D-380-125](#) [FW-20-04-G-D-410-150](#) [FW-20-04-G-D-460-250](#) [FW-20-04-G-D-500-200](#) [FW-20-04-G-D-570-140](#) [FW-20-04-L-D-300-140](#) [FW-20-04-L-D-308-125](#) [FW-20-04-L-D-385-110](#) [FW-20-04-L-D-500-090](#) [FW-20-04-L-D-530-180](#) [FW-20-05-F-D-312-190](#) [FW-20-05-F-D-345-065-P-TR](#) [FW-20-05-F-D-394-175](#) [FW-20-05-F-D-410-150-A](#) [FW-20-05-F-D-410-150-A-P](#) [FW-20-05-F-D-410-150-A-P-TR](#) [FW-20-05-F-D-414-150-A](#) [FW-20-05-F-D-452-165-P-TR](#) [FW-20-05-F-D-490-130](#) [FW-20-05-F-D-492-087-P-TR](#) [FW-20-05-F-D-505-065-A](#) [FW-20-05-F-D-560-100-A](#) [FW-20-05-FM-D-275-160-A-P-TR](#) [FW-20-05-FM-D-300-180-A-P](#) [FW-20-05-FM-D-315-100-P-TR](#) [FW-20-05-FM-D-410-150-A-P](#) [FW-20-05-FM-D-410-150-A-P-TR](#) [FW-20-05-G-D-300-200](#) [FW-20-05-G-D-323-085-A](#) [FW-20-05-G-D-340-160-P-TR](#) [FW-20-05-G-D-345-080](#) [FW-20-05-G-D-350-325](#) [FW-20-05-G-D-354-075-ES-A-P-TR](#) [FW-20-05-G-D-357-065-A](#) [FW-20-05-G-D-400-080](#) [FW-20-05-G-D-400-080-A](#) [FW-20-05-G-D-400-150-A](#) [FW-20-05-G-D-410-100-A](#) [FW-20-05-G-D-411-065-A](#) [FW-20-05-G-D-411-075-ES-A](#) [FW-20-05-G-D-430-160-A](#) [FW-20-05-G-D-446-160-A](#) [FW-20-05-G-D-446-160-A-TR](#) [FW-20-05-G-D-450-080](#) [FW-20-05-G-D-466-160-A-TR](#) [FW-20-05-G-D-470-160-A](#) [FW-20-05-G-D-475-200](#) [FW-20-05-G-D-500-075](#) [FW-20-05-G-D-500-085-A](#) [FW-20-05-G-D-500-130-A](#) [FW-20-05-G-D-525-150](#) [FW-20-05-G-D-529-146-A](#) [FW-20-05-G-D-530-125-A](#) [FW-20-05-G-D-530-130](#) [FW-20-05-G-D-545-130](#) [FW-20-05-G-D-550-075-ES-A](#) [FW-20-05-G-D-565-110](#) [FW-20-05-G-D-600-075-EP](#)