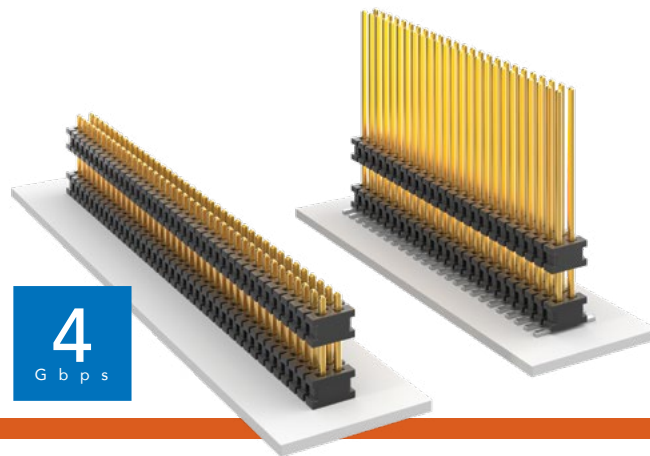


MICRO BOARD STACKER

(1.27 mm) .050" PITCH • FW SERIES



FW

Board Mates:

CLP, FLE

Cable Mates:

FFSD

SPECIFICATIONS

Insulator Material:

Black Liquid Crystal Polymer

Terminal Material:

Phosphor Bronze

Plating:

Sn or Au over 50 μ " (1.27 μ m) Ni

Operating Temp Range:

-55 °C to +125 °C

PROCESSING

Lead-Free Solderable:

Yes

SMT Lead Coplanarity:

(0.10 mm) .004" max (02-30)

(0.15 mm) .006" max (31-50)*

*(.004" stencil solution

may be available; contact

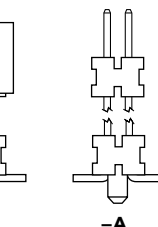
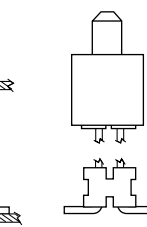
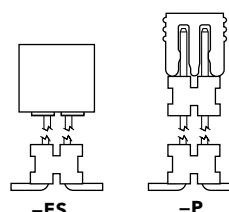
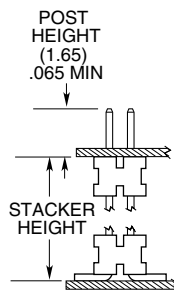
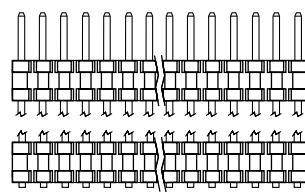
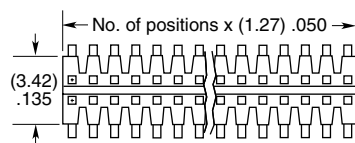
IPG@samtec.com)

MATED HEIGHT

FW LEAD STYLE	CLP LEAD STYLE	MATED HEIGHT*
FW-XX-03-X-X-233-065	-02	8.13 mm) .329"
FW-XX-03-X-X-303-065		9.91 mm) .390"

*Processing conditions will affect mated height.

SURFACE MOUNT



-ES
= End Shroud
(-.075 post
height only.
Mate only
with CLP)
(5.46 mm) .215"
to (15.49 mm) .610"
stacker height only
9 pins/row min.

-EP
= End Shroud
with Guide Post
(-.075 post
height only.
Mate only
with CLP)
(5.46 mm) .215"
to (15.49 mm) .610"
stacker height only
9 pins/row min.

-A
= Alignment Pin
(3 positions min.)
(5.46 mm) .215" to
(15.75 mm) .620"
stacker height only
(SMT only)

-P
= Pick & Place Pad
(5 positions min.)
(SMT only)

-TR
= Tape & Reel
(Max overall height
= Post+Stacker
Height+Pad+
Alignment Pin =
(17.78) .700")
(SMT only)

-FR
= Full Reel
Tape & Reel
(must order max.
quantity per reel;
contact Samtec
for quantity
breaks)
(SMT only)

ALSO AVAILABLE

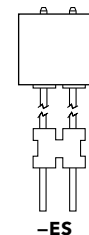
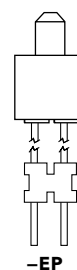
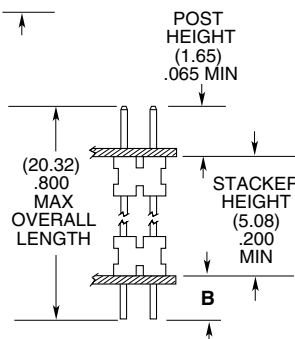
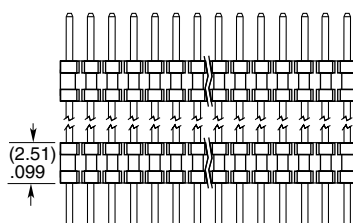
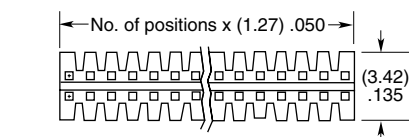
Smaller stack heights
(MOQ Required)

Notes:

For added mechanical stability,
Samtec recommends
mechanical board spacers
be used in applications
with gold or selective gold
plated connectors. Contact
ipg@samtec.com for more
information.

This Series is non-standard,
non-returnable.

THROUGH-HOLE



LEAD STYLE	TAIL (B)
-01	(1.14) .045
-02	(1.91) .075
-04	(2.29) .090

Mouser Electronics

Authorized Distributor

Click to View Pricing, Inventory, Delivery & Lifecycle Information:

[Samtec:](#)

[FW-05-04-G-D-465-145](#)