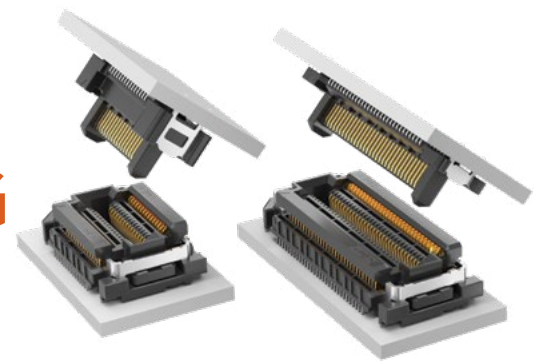


HIGH-SPEED FLOATING CONTACT SYSTEM

(0.50 mm) .0197" PITCH • FT5/FS5 SERIES



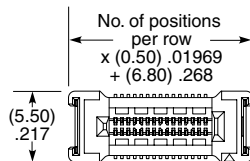
FT5
Mates:
FS5

FS5
Mates:
FT5

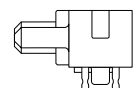
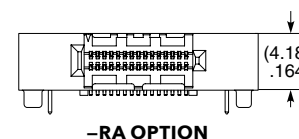
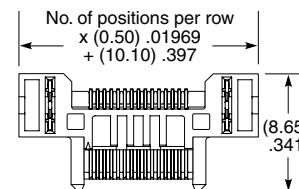
SPECIFICATIONS

Insulator Material:
Black Liquid Crystal Polymer
Contact Material:
Phosphor Bronze (FT5)
BeCu (FS5)
Weld Tab:
Phosphor Bronze
Plating:
Au or Sn over
50 μ " (1.27 μ m) Ni
Current Rating:
1.8 A per pin
(2 pins powered)
Operating Temp Range:
-55 °C to +125 °C
Lead-Free Solderable:
Yes

FT5	NO. OF POSITIONS	LEAD STYLE	PLATING OPTION	ROW OPTION	TH	OPTION
	-15, -30 (Per Row)	-01.0 = 1 mm Body Height -03.0 = 3 mm Body Height -01 = Right- angle	-L = 10 μ " (0.25 μ m) Gold on contact, Matte Tin on tail	-DV = Vertical -RA = Right- angle	Leave blank for -RA -TH = Through-hole weld tab	Required callouts -P = Pick & Place Pad (-DV only) -K = (5.00 mm) .197" DIA Polyimide Film Pick & Place Pad (-RA only) -TR = Tape & Reel -FR = Full Reel Tape & Reel (must order max. quantity per reel; contact Samtec for quantity breaks)



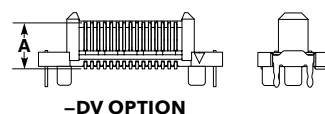
LEAD STYLE	A
-01.0	(3.72) .146
-03.0	(5.72) .225



MATED HEIGHT *

FS5 LEAD STYLE	FT5 LEAD STYLE	
	-01.0	-03.0
-02.0	(5.00 mm) .197"	(7.00 mm) .276"

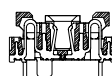
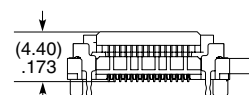
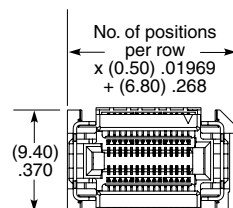
*Processing conditions will affect mated height.



-DV OPTION

-RA OPTION

FS5	NO. OF POSITIONS	LEAD STYLE	PLATING OPTION	DV	TH	K	XR
	-15, -30 (Per Row)	-04.0 = 4 mm Body Height	-L = 10 μ " (0.25 μ m) Gold on contact, Matte Tin on tail		-TH = Through-hole weld tab	-K = (8.25 mm) .325" DIA Polyimide Film Pick & Place Pad -TR = Tape & Reel -FR = Full Reel Tape & Reel (must order max. quantity per reel; contact Samtec for quantity breaks)	



ALSO AVAILABLE
MOQ Required

Other lead counts
Surface mount weld tab

Notes:
Floating contact system provides 0.50 mm float in X and Y directions.

Some lengths, styles and options are non-standard, non-returnable.

Mouser Electronics

Authorized Distributor

Click to View Pricing, Inventory, Delivery & Lifecycle Information:

Samtec:

[FS5-30-04.0-L-DV-TH-K-TR](#) [FS5-30-04.0-L-DV-TH-TR](#) [FS5-15-04.0-L-DV-TH-K-TR](#) [FS5-15-04.0-L-DV-TH-TR](#)