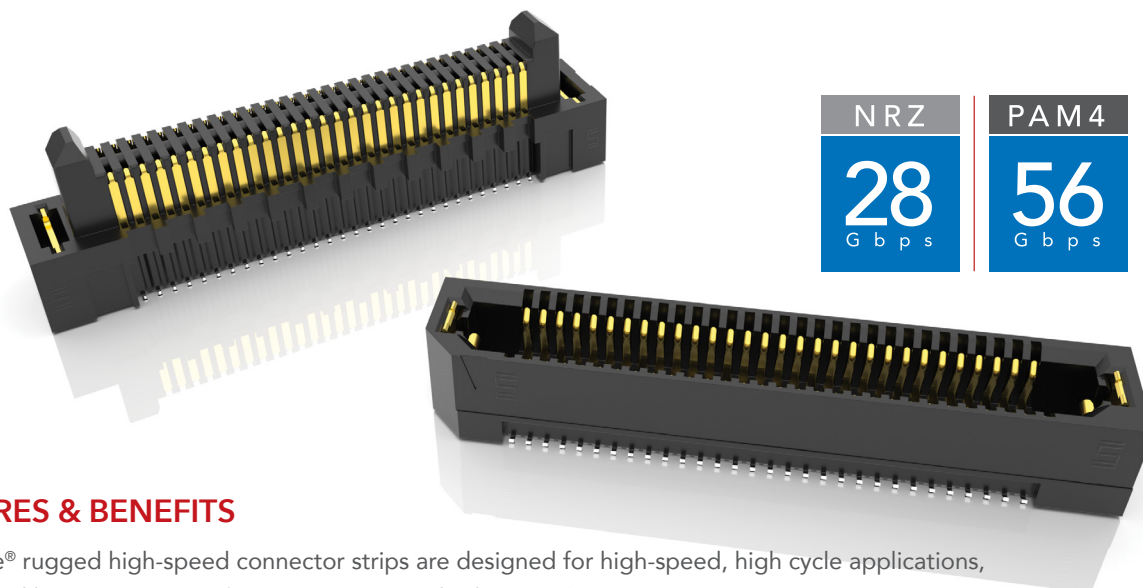


RUGGED HIGH-SPEED STRIPS



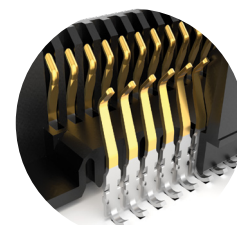
NRZ	PAM 4
28 Gbps	56 Gbps

FEATURES & BENEFITS

Edge Rate® rugged high-speed connector strips are designed for high-speed, high cycle applications, and enabled by Samtec's signal integrity-optimized Edge Rate® contact system.

- Up to 1.5 mm contact wipe for a reliable connection
- 20 to 200 positions
- Choice of 0.50 mm, 0.635 mm or 0.80 mm pitch
- 0.50 mm pitch system offers up to 40% PCB space savings vs. 0.80 mm pitch
- 0.635 mm pitch system with extremely slim 2.5 mm body width
- Rugged latching, extended guide posts and 360° shielding
- Severe Environment Testing qualified (ERM8/ERF8); aligns with MIL-DTL-55302.

Visit samtec.com/set



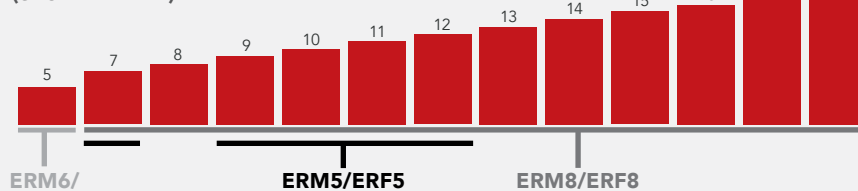
Signal integrity-optimized Edge Rate® contact system reduces broadside coupling



Rugged 360° shielding reduces EMI

EDGE RATE® STACK HEIGHT FLEXIBILITY

(shown in mm)



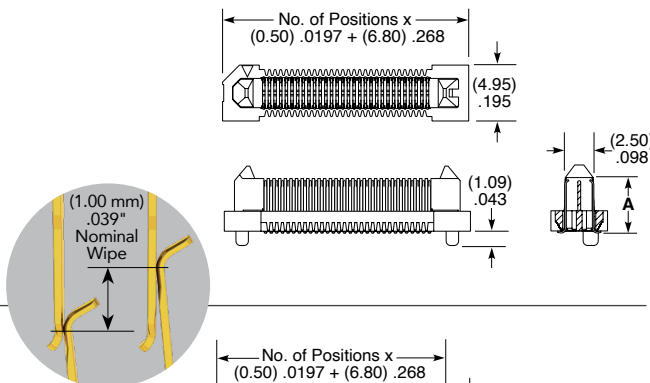
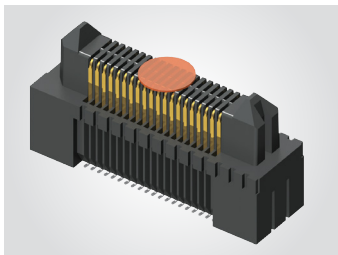
KEY SPECIFICATIONS

SERIES	PITCH	INSULATOR MATERIAL	TERMINAL MATERIAL	PLATING	OPERATING TEMP RANGE	CURRENT RATING	VOLTAGE RATING	LEAD-FREE SOLDERABLE
ERM5 / ERF5	0.50 mm	Black LCP	Phosphor Bronze or BeCu (ERM5), BeCu (ERF5)	Au or Sn over 50 μ" (1.27 μm) Ni	-55 °C to +125 °C	1.5 A	190 VAC/ 269 VDC	Yes
ERM6 / ERF6	0.635 mm		Copper Alloy			1.4 A	155 VAC/ 219 VDC	
ERM8 / ERF8	0.80 mm		Phosphor Bronze or BeCu (ERM8), BeCu (ERF8)			1.4 A	225 VAC/ 318 VDC	

(0.50 mm) .0197" PITCH • RUGGED HIGH-SPEED STRIPS

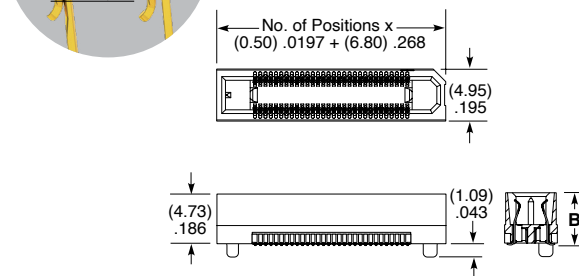
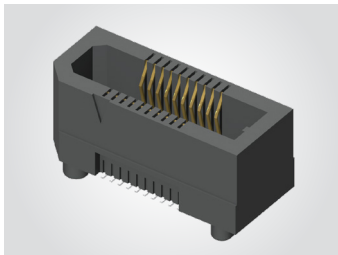
SERIES	POSITIONS PER ROW	LEAD STYLE	PLATING OPTION	DV	OPTIONS	PICK & PLACE PAD	"X"R
ERM5 = Header	-010, -020, -030, -040, -050, -060, -070, -075	-02.0 = 2 mm Body Height (ERM5 only) (Not available with -K-TR)	-L = 10 μ" (0.25 μm) Gold on contact, Matte Tin on Tail		(Not required. Only specify one option in callout. Will only mate with a corresponding option)	(Required in callout)	-TR = Tape & Reel
ERF5 = Socket		-04.0 = 4 mm Body Height (ERM5 only)			-FL = Friction Lock (max. -030 positions)	-K = (3.50 mm) .138" DIA Polyimide Film Pick & Place Pad (ERM5 only)	-FR = Full Reel Tape & Reel (must order maximum quantity per reel; contact Samtec for quantity breaks)
		-05.0 = 5 mm Body Height			-WT = Weld Tab	= (6.00 mm) .236" DIA Polyimide Film Pick & Place Pad (ERF5 only)	
		-07.0 = 7 mm Body Height (ERF5 only & Available up to 50 positions only)			-L = Latching (Available with -02.0 and -05.0 Lead Styles only)	-P = Plastic Pick & Place Pad	

ERM5
Board Mates:
ERF5



LEAD STYLE	A (ERM5)	B (ERF5)
-02.0	(4.84) .191	N/A
-04.0	(6.84) .269	N/A
-05.0	(7.84) .309	(4.91) .193
-07.0	N/A	(6.91) .272

ERF5
Board Mates:
ERM5



ERM5 LEAD STYLE	MATED HEIGHT*	
	ERF5 LEAD STYLE	
	-05.0	-07.0
-02.0	(7.00) .276	(9.00) .354
-04.0	(9.00) .354	(11.00) .433
-05.0	(10.00) .394	(12.00) .472

*Processing conditions will affect mated height.

View complete specifications at: samtec.com?ERM5 or samtec.com?ERF5

ERF5	POSITIONS PER ROW	01	PLATING OPTION	D	RA	"X"R
------	-------------------	----	----------------	---	----	------

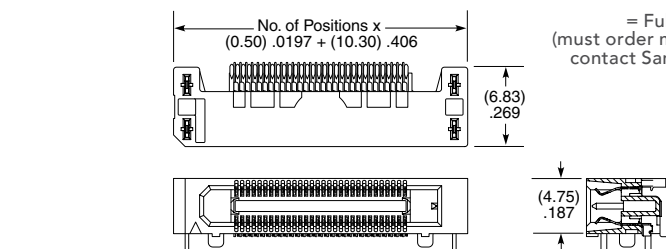
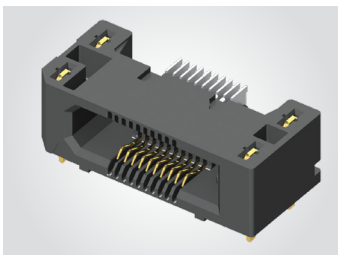
Right-Angle
Socket

-010, -020, -030,
-040, -050

-L
= 10 μ" (0.25 μm) Gold on
contact, Matte Tin on tail

-TR
= Tape & Reel

ERF5-RA
Board Mates:
ERM5



-FR
= Full Reel Tape & Reel
(must order maximum quantity per reel;
contact Samtec for quantity breaks)

Note:
Some lengths,
styles and
options are
non-standard,
non-returnable.

View complete specifications at: samtec.com?ERF5-RA

Mouser Electronics

Authorized Distributor

Click to View Pricing, Inventory, Delivery & Lifecycle Information:

[Samtec:](#)

[ERM5-005-02.0-L-DV-P-TR](#) [ERM5-010-02.0-L-DV-P-FR](#) [ERM5-020-04.0-S-DV-P-TR](#)