

DO NOT
SCALE FROM
THIS PRINT

DESIGNED & DIMENSIONED
IN MILLIMETERS[INCHES]

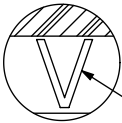
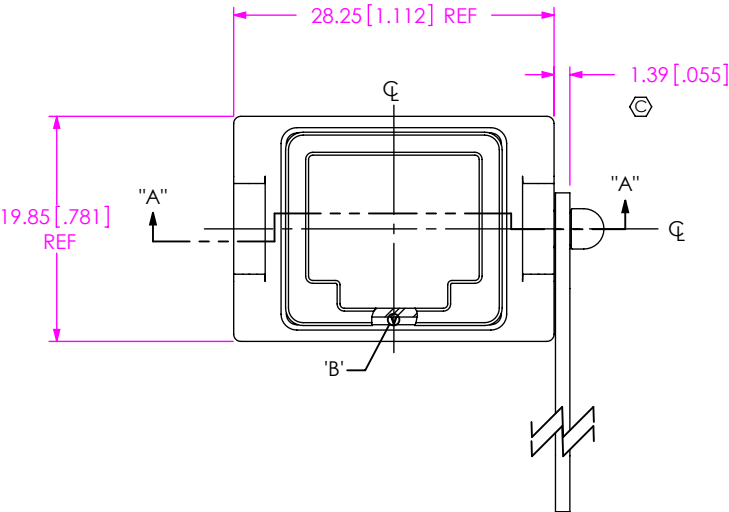
DCA-RCE-XX-01

No OF PORTS

-01: 1 PORT

OPTION

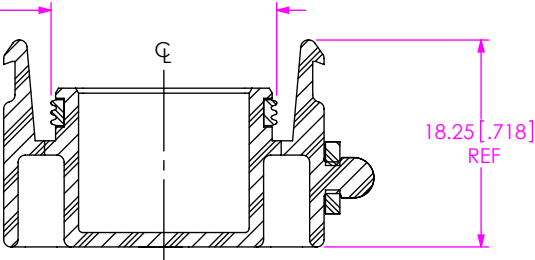
-01: W/STRAP



SEE NOTE 6

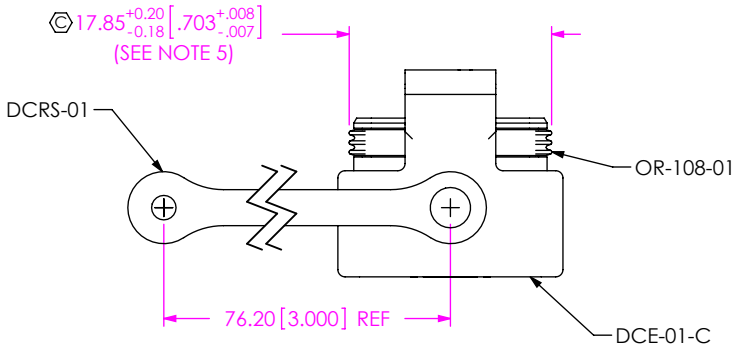
DETAIL 'B'
SCALE 15:1

19.90^{+0.20}_{-0.18} [.783^{+0.008}_{-.007}]
(SEE NOTE 5)



SECTION "A"- "A"

FIG. 1
DCA-RCE-01-01 SHOWN



NOTES:

1. Ⓢ REPRESENTS A CRITICAL DIMENSION.
2. COMPONENTS OF SUB-ASSEMBLY TO BE INSPECTED USING COMPONENT PRINTS.
3. MINIMUM RETENTION: 4.4N[1.0 LB.].
4. PARTS TO BE BULK PACKAGED.
5. GASKET TO BE MEASURED ALONG CENTERLINE OF PART.
6. OR-108-XX POSITION INDICATOR.

UNLESS OTHERWISE SPECIFIED,
DIMENSIONS ARE IN MILLIMETERS.
TOLERANCES ARE:
DECIMALS ANGLES
X.X: ±0.3 [.01] 2°
X.XX: ±0.13 [.005]
X.XXX: ±0.051 [.0020]

PROPRIETARY NOTE
THIS DOCUMENT CONTAINS CONFIDENTIAL AND
PROPRIETARY INFORMATION AND ALL DESIGN,
MANUFACTURING, REPRODUCTION, USE, PATENT RIGHTS
AND SALES RIGHTS ARE EXPRESSLY RESERVED BY SAMTEC,
INC. THIS DOCUMENT SHALL NOT BE DISCLOSED, IN WHOLE
OR PART, TO ANY UNAUTHORIZED PERSON OR ENTITY NOR
REPRODUCED, TRANSFERRED OR INCORPORATED IN ANY
OTHER PROJECT IN ANY MANNER WITHOUT THE EXPRESS
WRITTEN CONSENT OF SAMTEC, INC.

MATERIAL: DO NOT SCALE DRAWING
CAP: PA66
STRAP: EPDM
O-RING: NBR + SILICONE OIL

SHEET SCALE: 1.5:1

samtec

520 PARK EAST BLVD, NEW ALBANY, IN 47150
PHONE: 812-944-6733 FAX: 812-948-5047
e-Mail info@SAMTEC.com code 55322

DESCRIPTION: DUST CAP ASM FOR RCE

DWG. NO. DCA-RCE-XX-01

BY: T NEWTON 1/19/2009 SHEET 1 OF 1

Mouser Electronics

Authorized Distributor

Click to View Pricing, Inventory, Delivery & Lifecycle Information:

[Samtec:](#)

[DCA-RCE-01-01](#)