

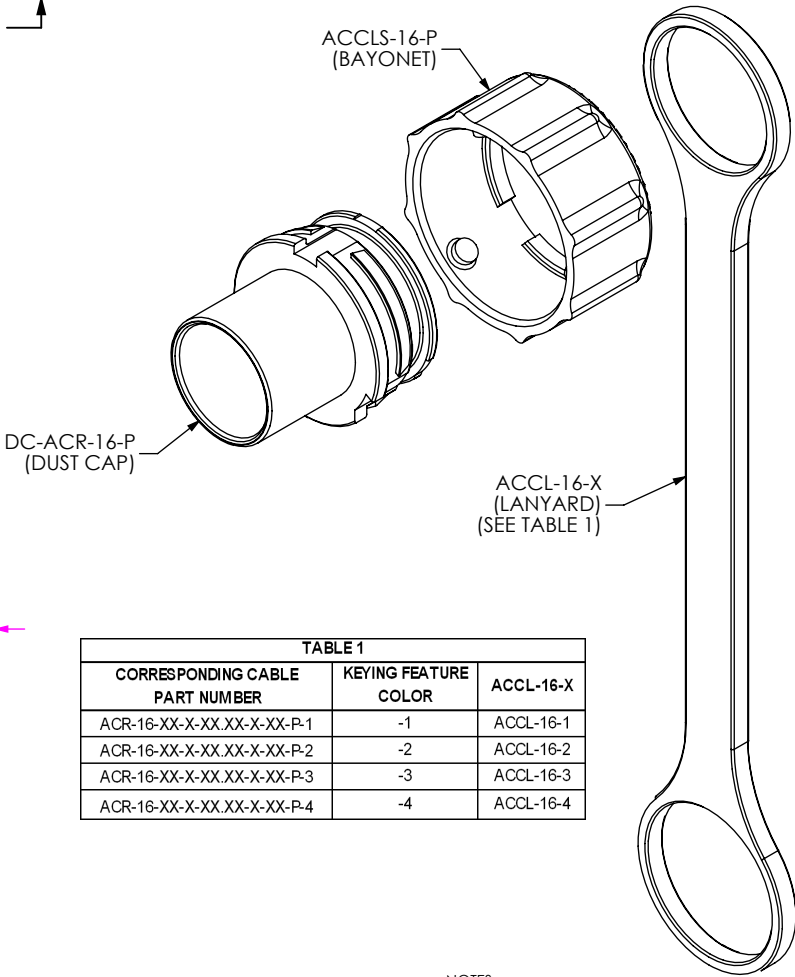
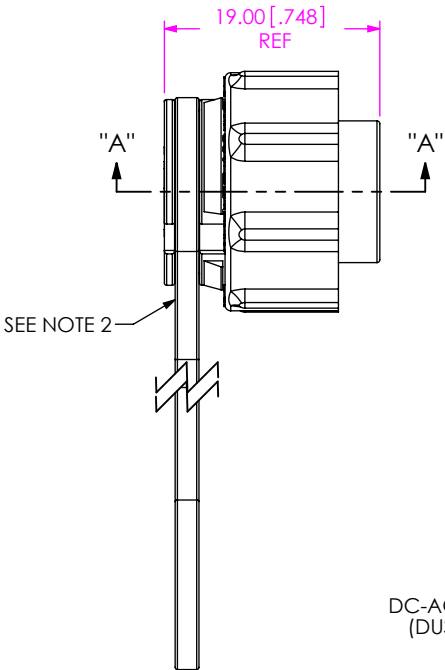
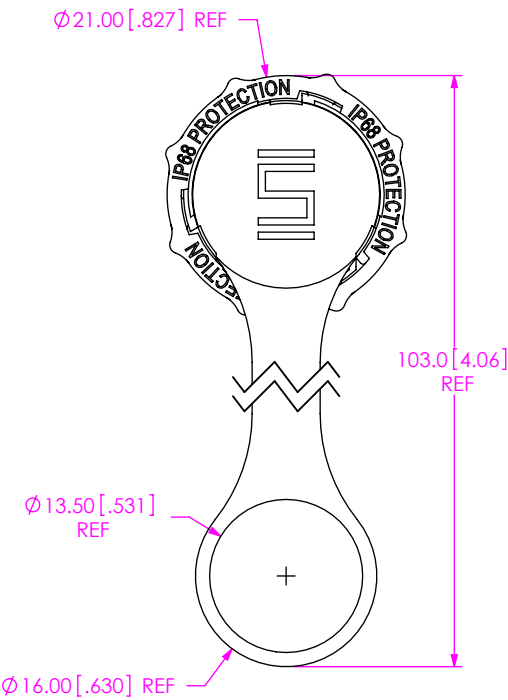
DO NOT
SCALE FROM
THIS PRINT

DESIGNED & DIMENSIONED
IN MILLIMETERS[INCHES]

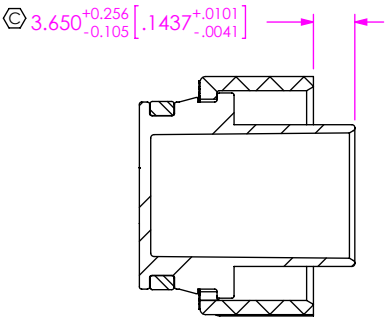
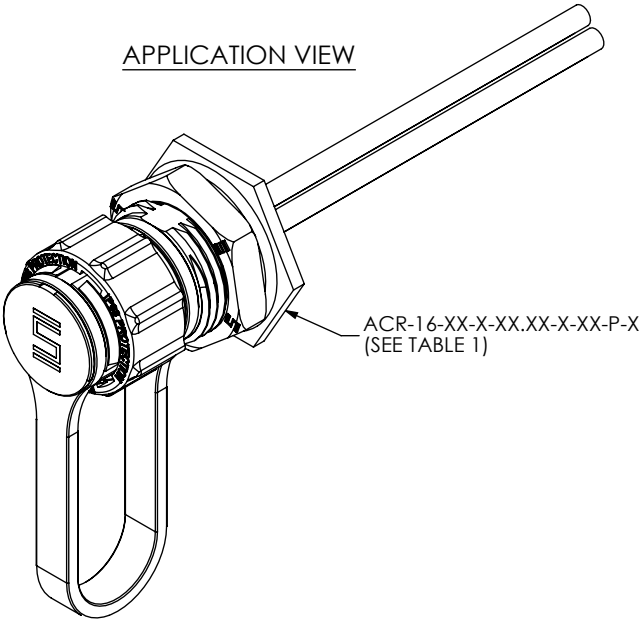
DCA-ACR-16-P-X

SIZE
PLASTIC

KEYING FEATURE COLOR
-1: ORANGE
-2: GREEN
-3: BLUE
-4: YELLOW



APPLICATION VIEW



SECTION "A-A"

TABLE 1		
CORRESPONDING CABLE PART NUMBER	KEYING FEATURE COLOR	ACCL-16-X
ACR-16-XX-X-XX.XX-X-XX-P-1	-1	ACCL-16-1
ACR-16-XX-X-XX.XX-X-XX-P-2	-2	ACCL-16-2
ACR-16-XX-X-XX.XX-X-XX-P-3	-3	ACCL-16-3
ACR-16-XX-X-XX.XX-X-XX-P-4	-4	ACCL-16-4

- NOTES:
- 1. Ⓢ REPRESENTS A CRITICAL DIMENSION
 - 2. ACCL-16-X MUST SEAT IN GROOVE IN DC-ACR-16-P.

UNLESS OTHERWISE SPECIFIED,
DIMENSIONS ARE IN MILLIMETERS.

TOLERANCES ARE:

DECIMALS	ANGLES
X.X: ±0.3 [.01]	2°
X.XX: ±0.08 [.003]	
X.XXX: ±0.051 [.0020]	

PROPRIETARY NOTE

THIS DOCUMENT CONTAINS INFORMATION
CONFIDENTIAL AND PROPRIETARY TO
SAMTEC, INC. AND SHALL NOT BE REPRODUCED
OR TRANSFERRED TO OTHER DOCUMENTS OR
DISCLOSED TO OTHERS OR USED FOR ANY
PURPOSE OTHER THAN THAT WHICH IT WAS
OBTAINED WITHOUT THE EXPRESSED WRITTEN
CONSENT OF SAMTEC, INC.

MATERIAL: DO NOT SCALE DRAWING SHEET SCALE: 1:5.1

DC-ACR-16-P: NYLON, COLOR: BLACK
ACCLS-16-P: NYLON, COLOR: BLACK
ACCL-16-X: SILICONE



520 PARK EAST BLVD, NEW ALBANY, IN 47150
PHONE: 812-944-6733 FAX: 812-948-5047
e-Mail: info@SAMTEC.com code 55322

DESCRIPTION:
ACCLIMATE CIRC. PANEL DUST CAP

DWG. NO. DCA-ACR-16-P-X

BY: D.SCHMELZ 04/26/2010 SHEET 1 OF 1

Mouser Electronics

Authorized Distributor

Click to View Pricing, Inventory, Delivery & Lifecycle Information:

[Samtec:](#)

[DCA-ACR-16-P-1](#)