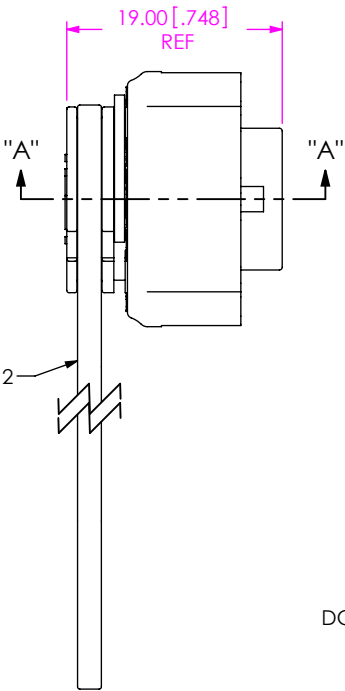
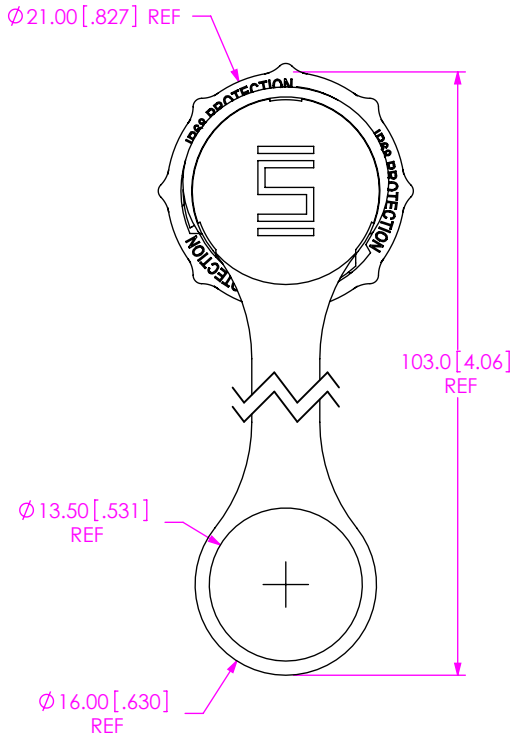


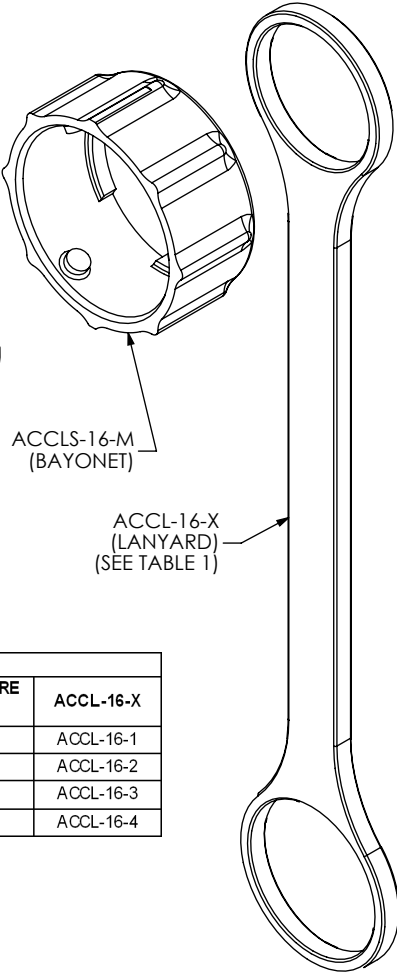
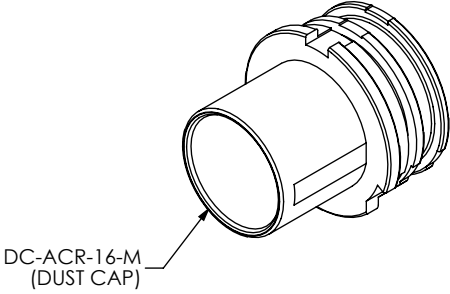
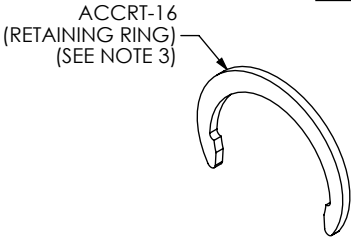
DO NOT
SCALE FROM
THIS PRINT

DESIGNED & DIMENSIONED
IN MILLIMETERS[INCHES]

DCA-ACR-16-M-X



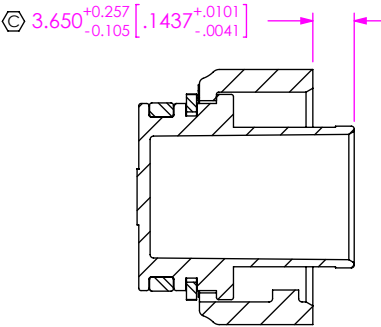
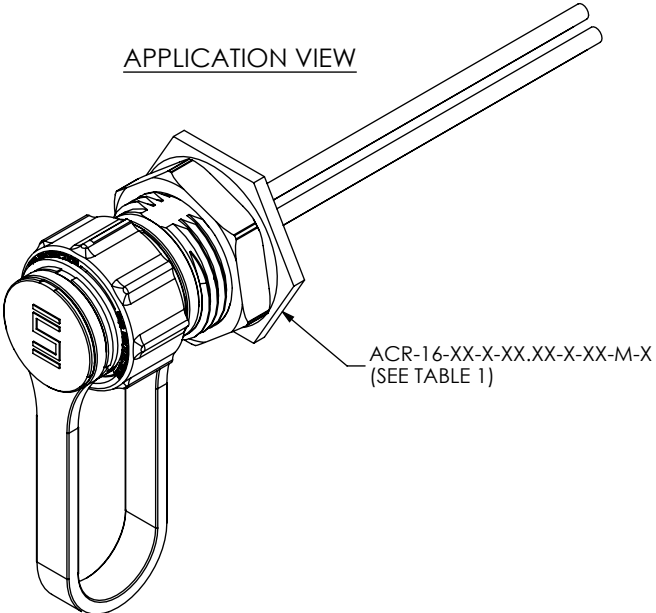
SEE NOTE 2



SIZE
METAL

KEYING FEATURE COLOR
(SEE TABLE 1)
-1: ORANGE
-2: GREEN
-3: BLUE
-4: YELLOW

APPLICATION VIEW



SECTION "A"-"A"

TABLE 1		
CORRESPONDING CABLE PART NUMBER	KEYING FEATURE COLOR	ACCL-16-X
ACR-16-XX-X-XX.XX-X-XX-M-1	-1	ACCL-16-1
ACR-16-XX-X-XX.XX-X-XX-M-2	-2	ACCL-16-2
ACR-16-XX-X-XX.XX-X-XX-M-3	-3	ACCL-16-3
ACR-16-XX-X-XX.XX-X-XX-M-4	-4	ACCL-16-4

NOTES:

1. REPRESENTS A CRITICAL DIMENSION.
2. ACCL-16-X MUST SEAT IN GROOVE IN DC-ACR-16-M.
3. SNAP ACCR-16 INTO GROOVE ON DC-ACR-16-M.

UNLESS OTHERWISE SPECIFIED,
DIMENSIONS ARE IN MILLIMETERS.
TOLERANCES ARE:
DECIMALS ANGLES
X.X: ± 0.3 [.01] 2°
X.XX: ± 0.13 [.005]
X.XXX: ± 0.051 [.0020]

PROPRIETARY NOTE
THIS DOCUMENT CONTAINS INFORMATION
CONFIDENTIAL AND PROPRIETARY TO
SAMTEC, INC. AND SHALL NOT BE REPRODUCED
OR TRANSFERRED TO OTHER DOCUMENTS OR
DISCLOSED TO OTHERS OR USED FOR ANY
PURPOSE OTHER THAN THAT WHICH IT WAS
OBTAINED WITHOUT THE EXPRESSED WRITTEN
CONSENT OF SAMTEC, INC.

MATERIAL:
DC-ACR-16-M: ZINC ALLOY
ACCL-16-M: ZINC ALLOY
ACCR-16: STAINLESS STEEL
ACCL-16-X: SILICONE

DO NOT SCALE DRAWING SHEET SCALE: 1:5.1

samtec

520 PARK EAST BLVD, NEW ALBANY, IN 47150
PHONE: 812-944-6733 FAX: 812-948-5047
e-Mail: info@SAMTEC.com code 55322

DESCRIPTION:
ACCLIMATE CIRC. PANEL DUST CAP

DWG. NO.
DCA-ACR-16-M-X

BY: D.SCHMELZ 04/26/2010 SHEET 1 OF 1

Mouser Electronics

Authorized Distributor

Click to View Pricing, Inventory, Delivery & Lifecycle Information:

[Samtec:](#)

[DCA-ACR-16-M-1](#)