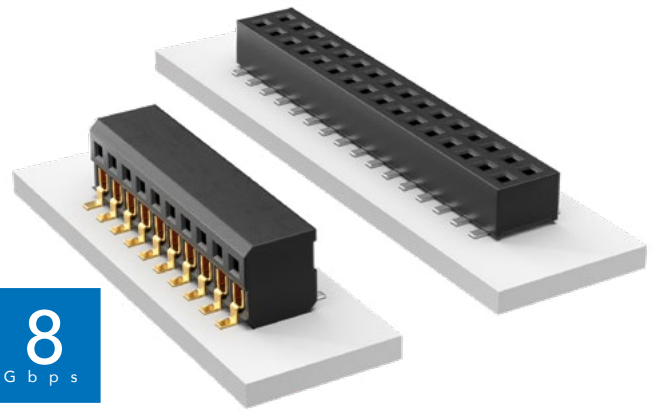


LOW-PROFILE DUAL WIPE SOCKET

(1.27 mm) .050" PITCH • CLP SERIES



CLP

Mates:

FTSH, FTS, FW

CLP	1	NO. PINS PER ROW	02	PLATING OPTION	ROW OPTION	OTHER OPTIONS
-----	---	------------------	----	----------------	------------	---------------

02 thru 50

SPECIFICATIONS

Insulator Material:

Black Liquid Crystal Polymer

Contact Material:

Phosphor Bronze

Plating:

Sn or Au over

50 μ" (1.27 μm) Ni

Current Rating (CLP/FTSH):

3.4 A per pin

(2 pins powered)

Voltage Rating:

280 VAC/395 VDC

Operating Temp Range:

-55 °C to +125 °C

Insertion Depth:

Top Entry =

(1.40 mm) .055" minimum

Bottom Entry =

(2.41 mm) .095" minimum

plus board thickness

DH Entry =

(2.31 mm) .091" to (2.67 mm) .105"

Normal Force:

60 grams (0.59 N) average

Max Cycles:

100 with 10 μ" (0.25 μm) Au

-F

= Gold flash on contact, Matte Tin on tail

-L

= 10 μ" (0.25 μm)

Gold on contact,

Matte Tin on tail

-G

= 10 μ" (0.25 μm)

Gold

(-D only)

-D

= Double Row

-DH

= Double Horizontal

(Requires FTSH-04

lead style)

-BE

= Bottom Entry (Required for bottom entry applications)

-A

= Alignment Pin

(Not available with -PA option)

(05, 06, 07, 08, 10, 12, 15,

20, 25, 30, 40 positions only)

(-DH option and other sizes. Contact Samtec.)

-K

= (4.00 mm) .157" DIA

Polyimide film Pick & Place Pad

(3 positions minimum)

-P

= Pick & Place Pad

(5 positions min. -D only)

(Not always necessary for auto placement.

See Flex Processing.)

-PA

= Pick & Place Pad with Alignment Pin

(-D only)

(Not available with -A option)

-TR

= Tape & Reel

-FR

= Full Reel Tape & Reel

(must order maximum

quantity per reel; contact Samtec for

quantity breaks)

PROCESSING

Lead-Free Solderable:

Yes

SMT Lead Coplanarity:

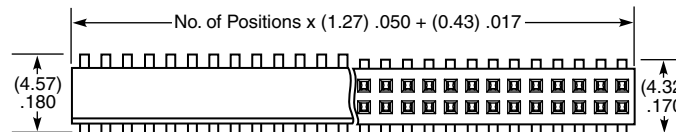
(0.10 mm) .004" max (02-35)

(0.15 mm) .006" max (36-50)*

*(.004" stencil solution

may be available; contact

ipg@samtec.com)



ALSO AVAILABLE

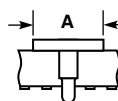
MOQ Required

Single row

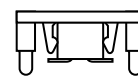
Other platings



PIN/ROW	A
04-15	(3.56) .140
16-50	(7.11) .280



If odd pins/row, alignment pins are on middle position on centerline of the part.
If even pins/row, then alignment pins are between middle two positions.



-PA OPTION



-P OPTION

Note:

Some lengths, styles and options are non-standard, non-returnable.

Mouser Electronics

Authorized Distributor

Click to View Pricing, Inventory, Delivery & Lifecycle Information:

[Samtec:](#)

[CLP-107-02-F-D-A-P](#)