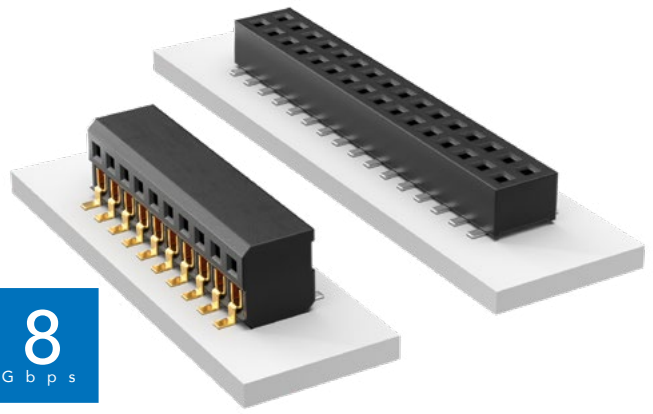


LOW-PROFILE DUAL WIPE SOCKET

(1.27 mm) .050" PITCH • CLP SERIES



CLP

Mates:

FTSH, FTS, FW

CLP	1	NO. PINS PER ROW	02	PLATING OPTION	ROW OPTION	OTHER OPTIONS
-----	---	------------------	----	----------------	------------	---------------

02 thru 50

SPECIFICATIONS

Insulator Material:

Black Liquid Crystal Polymer

Contact Material:

Phosphor Bronze

Plating:

Sn or Au over

50 μ" (1.27 μm) Ni

Current Rating (CLP/FTSH):

3.4 A per pin

(2 pins powered)

Voltage Rating:

280 VAC/395 VDC

Operating Temp Range:

-55 °C to +125 °C

Insertion Depth:

Top Entry =

(1.40 mm) .055" minimum

Bottom Entry =

(2.41 mm) .095" minimum

plus board thickness

DH Entry =

(2.31 mm) .091" to (2.67 mm) .105"

Normal Force:

60 grams (0.59 N) average

Max Cycles:

100 with 10 μ" (0.25 μm) Au

-F

= Gold flash on contact, Matte Tin on tail

-L

= 10 μ"

(0.25 μm)

Gold on contact,

Matte Tin on tail

-G

= 10 μ"

(0.25 μm)

Gold

(-D only)

-D

= Double Row

-DH

= Double Horizontal

(Requires FTSH-04

lead style)

-BE

= Bottom Entry
(Required for bottom entry applications)

-A

= Alignment Pin
(Not available with -PA option)

(05, 06, 07, 08, 10, 12, 15, 20, 25, 30, 40 positions only)
(-DH option and other sizes. Contact Samtec.)

-K

= (4.00 mm) .157" DIA
Polyimide film Pick & Place Pad
(3 positions minimum)

-P

= Pick & Place Pad
(5 positions min. -D only)
(Not always necessary for auto placement. See Flex Processing.)

-PA

= Pick & Place Pad with Alignment Pin
(-D only)
(Not available with -A option)

-TR

= Tape & Reel

-FR

= Full Reel Tape & Reel
(must order maximum quantity per reel; contact Samtec for quantity breaks)

PROCESSING

Lead-Free Solderable:

Yes

SMT Lead Coplanarity:

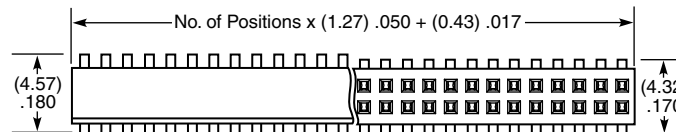
(0.10 mm) .004" max (02-35)

(0.15 mm) .006" max (36-50)*

*(.004" stencil solution

may be available; contact

ipg@samtec.com)



ALSO AVAILABLE

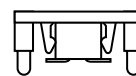
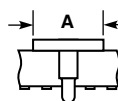
MOQ Required

Single row

Other platings



PIN/ROW	A
04-15	(3.56) .140
16-50	(7.11) .280



-PA OPTION



-P OPTION

If odd pins/row, alignment pins are on middle position on centerline of the part.
If even pins/row, then alignment pins are between middle two positions.

Note:

Some lengths, styles and options are non-standard, non-returnable.

Mouser Electronics

Authorized Distributor

Click to View Pricing, Inventory, Delivery & Lifecycle Information:

Samtec:

[CLP-107-02-L-D-BE-A-K](#)