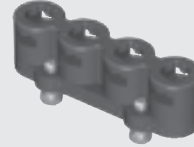


CCH-J-01



CCH-J-04



CCH-J-02

CCH SERIES

HIGH-PERFORMANCE TEST POINTS

SPECIFICATIONS

For complete specifications and recommended PCB layouts see www.samtec.com?CCH

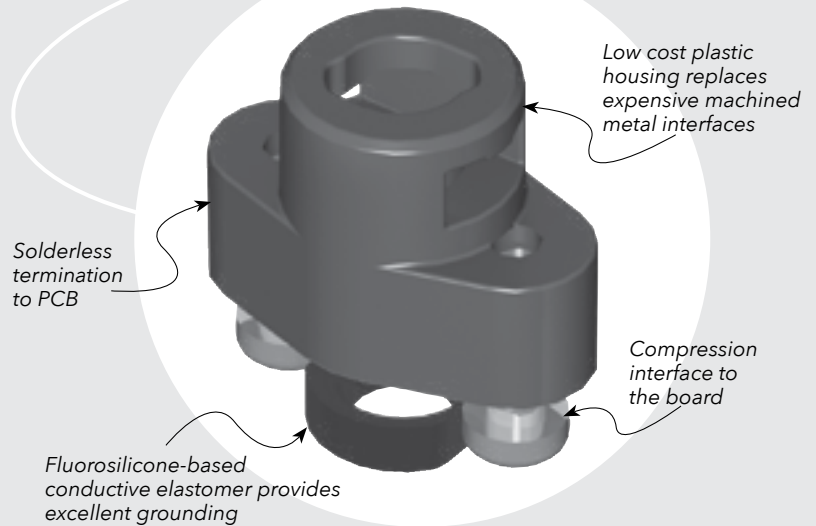
Insulator Material:
Black LCP

Gasket Material:
MIL-DTL-83528C, Type D

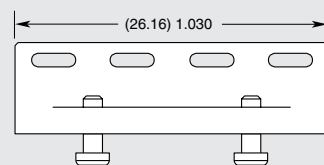
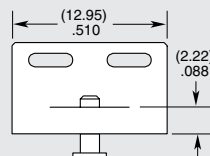
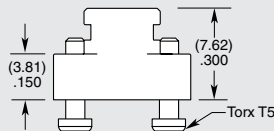
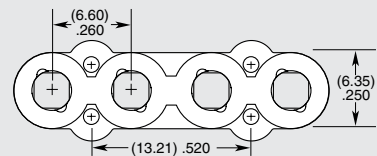
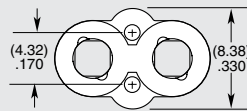
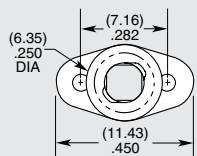
Mates with:
RF25S

OTHER SOLUTIONS

- Replacement elastomer gaskets available



TYPE	J	NUMBER OF POSITIONS
CCH = Single position test point		-01 = 1 Position -02 = 2 Positions -04 = 4 Positions



Note:
Some lengths, styles and options are non-standard, non-returnable.

Mouser Electronics

Authorized Distributor

Click to View Pricing, Inventory, Delivery & Lifecycle Information:

[Samtec:](#)

[CCH-J-01](#) [CCH-J-02](#) [CCH-J-04](#)