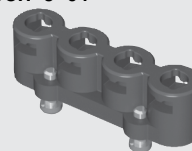


CCH-J-01



CCH-J-04



CCH-J-02

CCH SERIES

HIGH-PERFORMANCE TEST POINTS

SPECIFICATIONS

For complete specifications and recommended PCB layouts see www.samtec.com?CCH

Insulator Material:

Black LCP

Gasket Material:

MIL-DTL-83528C, Type D

Mates with:
RF25S

OTHER SOLUTIONS

- Replacement elastomer gaskets available

Solderless
termination
to PCB

Low cost plastic
housing replaces
expensive machined
metal interfaces

Compression
interface to
the board

Fluorosilicone-based
conductive elastomer
provides excellent grounding

TYPE**J****NUMBER OF POSITIONS****CCH**

= Single position test point

-01

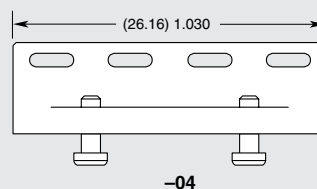
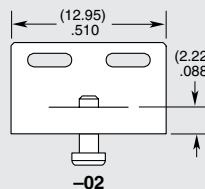
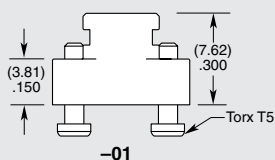
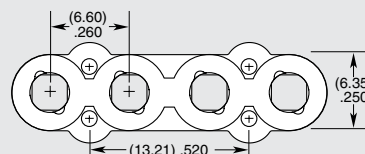
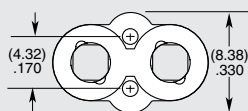
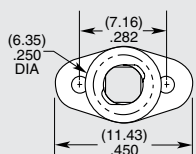
= 1 Position

-02

= 2 Positions

-04

= 4 Positions



Note:
Some lengths, styles and options are non-standard, non-returnable.

Mouser Electronics

Authorized Distributor

Click to View Pricing, Inventory, Delivery & Lifecycle Information:

[Samtec:](#)

[CCH-J-01](#) [CCH-J-02](#) [CCH-J-04](#)