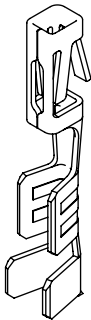


DO NOT
SCALE FROM
THIS PRINT



ALL DIMENSIONS ARE REFERENCE
(SEE XC-179-XX-X-XX FOR CONTROLLING PRINT)

CC79X-XXXX-XX-X

SUPPLIED
-L: LOOSE
-R: REEL

LEAD STYLE
-2630 (26-30 AWG)
-2024 (20-24 AWG)
-2830 (28-30 AWG)(PTFE)

PLATING
-F: 3μ" GOLD ON CONTACT,
BRIGHT ACID TIN ON TAIL
-L: 10μ" GOLD ON CONTACT,
BRIGHT ACID TIN ON TAIL
-S: 30μ" GOLD ON CONTACT,
BRIGHT ACID TIN ON TAIL

OPTION
(INSULATION THICKNESS)
-01

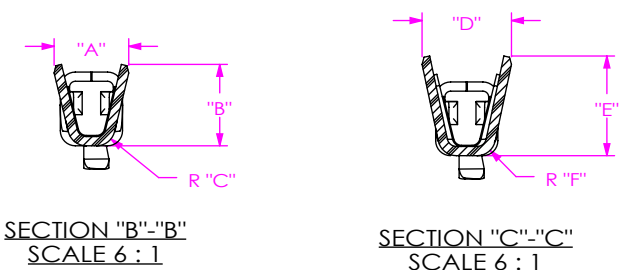
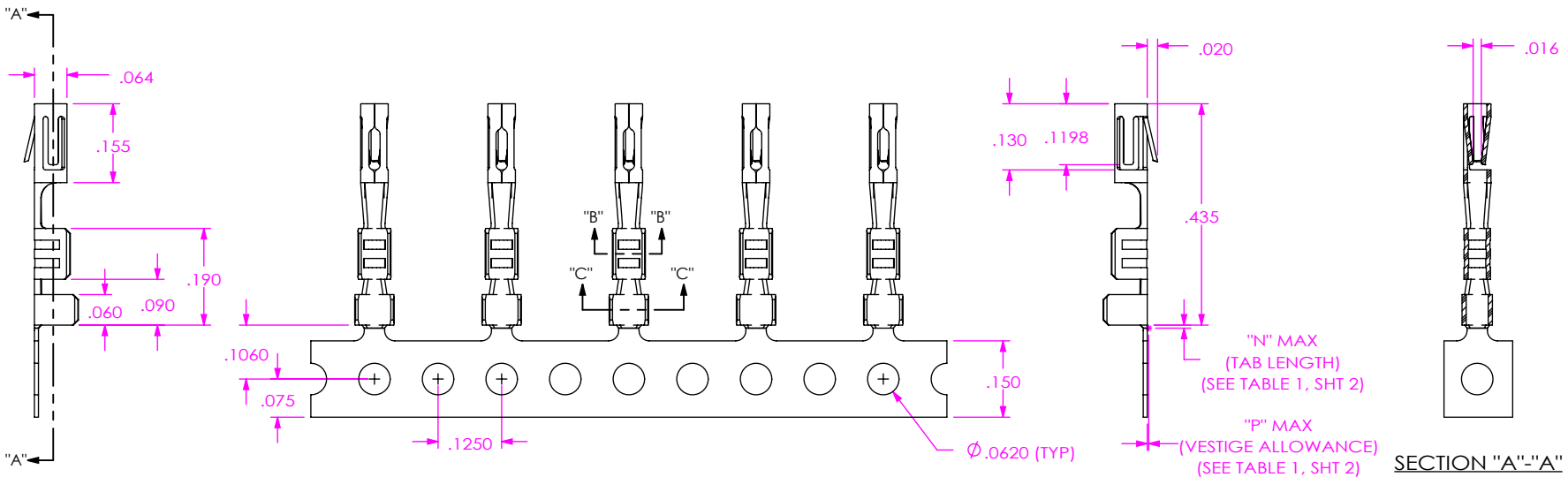


FIG 1
(CC79R-XXXX-01-X SHOWN)

TABLE 1						
STYLE	"A"	"B"	"C"	"D"	"E"	"F"
-2630	.055	.045	.015	.080	.073	.025
-2024	.080	.073	.018	.110	.103	.030
-2830	.055	.045	.015	.054	.057	.016

- NOTES:
1. PLATED C-179 PARTS TO BE PULLED, PLATING OPTION CONFIRMED, POSITIONED AS SHOWN ON SAMTEC REEL WITH VIEWPORTS, LABELED CC79R WITH APPROPRIATE PLATING CALLOUT AND LABEL PLACED AS SHOWN.
 2. MAXIMUM No OF SPLICES PER REEL: 2
 3. SPLICES ARE NOT TO BE CONNECTED.
 4. NUMBER OF SPLICES TO BE MARKED ON EACH REEL.
 5. REELED PARTS TO BE INTERLEAVED WITH PAPER BETWEEN EACH LAYER OF PARTS.
 6. ALLOWABLE INTERLEAF SPLICES PER REEL: 3
 7. SECURELY CONNECT INTERLEAF SPLICE.
 8. OUTER WRAP SHALL RECEIVE HMS1015C-16MM PROTECTIVE REEL BAND.
 9. DUE TO PLATING REQUIREMENTS CONTACT SAMPLES MAY BE REMOVED INTERMITTINGLY FROM THE CARRIER RESULTING IN SMALL GAPS BUT DOES NOT AFFECT FINAL COUNT.
 10. QTY PER REEL: 12,000 ± 15 PCS

UNLESS OTHERWISE SPECIFIED,
DIMENSIONS ARE IN INCHES.

PROPRIETARY NOTE
THIS DOCUMENT CONTAINS CONFIDENTIAL AND
PROPRIETARY INFORMATION AND ALL DESIGN,
MANUFACTURING, REPRODUCTION, USE, PATENT RIGHTS
AND SALES RIGHTS ARE EXPRESSLY RESERVED BY SAMTEC,
INC. THIS DOCUMENT SHALL NOT BE DISCLOSED, IN WHOLE
OR PART, TO ANY UNAUTHORIZED PERSON OR ENTITY NOR
REPRODUCED, TRANSFERRED OR INCORPORATED IN ANY
OTHER PROJECT IN ANY MANNER WITHOUT THE EXPRESS
WRITTEN CONSENT OF SAMTEC, INC.



520 PARK EAST BLVD, NEW ALBANY, IN 47150
PHONE: 812-944-6733 FAX: 812-948-5047
e-Mail: info@SAMTEC.com code: 55322

MATERIAL: DO NOT SCALE DRAWING SHEET SCALE: 3:1

PHOS BRONZE
THICKNESS: .0080

F:\DWG\MISC\MKTG\CC79X-XXXX-XX-X-MKT.SLDDRW

DESCRIPTION:
.100 IPD1 CONTACT

DWG. NO.
CC79X-XXXX-XX-X

BY: DEAN P 8/12/2004 SHEET 1 OF 2

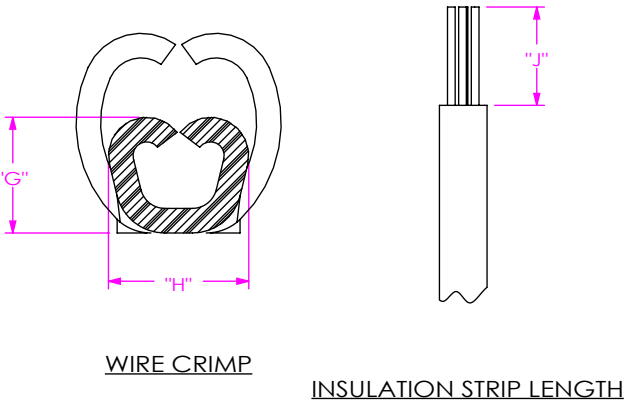


FIG 2
RECOMMENDED PROCESSING

TABLE 2									
P/N	AWG	STRANDS/AWG	INSULATION OD	"G"	"H"	"J"	"N" MAX (TAB LENGTH)	"P" MAX (VESTIGE LENGTH)	PULL FORCE (LBS)
CC79X-2630-01-X	30	7/38	.029-.035	.0250	.0430	.133	.0120	.0020	1.5
	28	7/36	.032-.038	.0260	.0430	.133	.0120	.0020	2
	26	7/34	.048-.054	.0270	.0430	.133	.0120	.0020	3
CC79X-2024-01-X	24	7/32	.053-.059	.0310	.0570	.128	.0120	.0020	5
	22	7/30	.059-.065	.0340	.0570	.128	.0120	.0020	8
	20	7/28	.066-.072	.0360	.0570	.128	.0120	.0020	13
	20TC	7/28	.057-.063	.0360	.0570	.128	.0120	.0020	13
	24TC	7/32	.041-.047	.0310	.0570	.128	.0120	.0020	5
CC79X-2830-01-X	30TC	7/38	.029-.035	.0250	.0430	.128	.0120	.0020	1.5
	28TC	7/36	.032-.038	.0260	.0430	.128	.0120	.0020	2

TABLE 3				
SUPPLIED	REEL PART NUMBER	"K"	"L"	"M"
-R	R-24-05.00-0.75-P	24.0	5.00	1.125

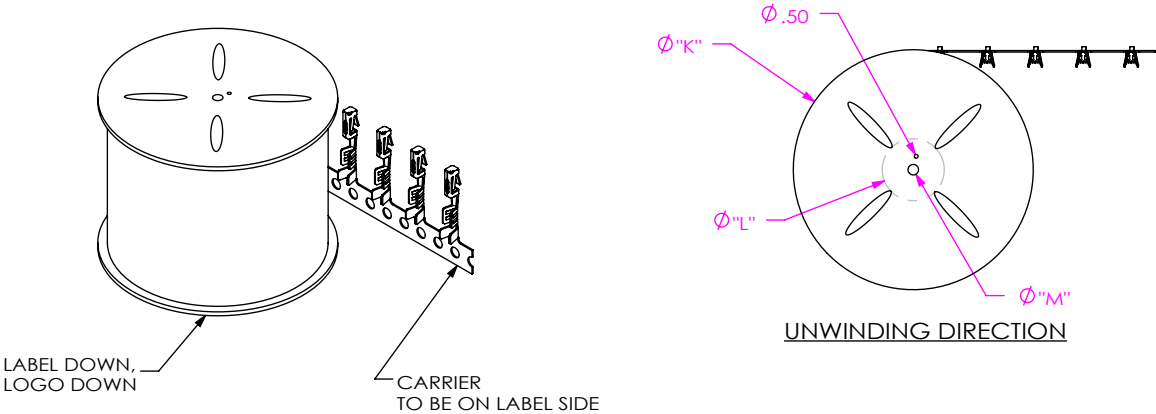


FIG 3
REEL SPECIFICATIONS

F:\DWG\MISC\MKTG\CC79X-XXXX-XX-X-MKT.SLDDRW

PROPRIETARY NOTE

THIS DOCUMENT CONTAINS CONFIDENTIAL AND PROPRIETARY INFORMATION AND ALL DESIGN, MANUFACTURING, REPRODUCTION, USE, PATENT RIGHTS AND SALES RIGHTS ARE EXPRESSLY RESERVED BY SAMTEC, INC. THIS DOCUMENT SHALL NOT BE DISCLOSED, IN WHOLE OR PART, TO ANY UNAUTHORIZED PERSON OR ENTITY NOR REPRODUCED, TRANSFERRED OR INCORPORATED IN ANY OTHER PROJECT IN ANY MANNER WITHOUT THE EXPRESS WRITTEN CONSENT OF SAMTEC, INC.

DO NOT SCALE DRAWING

SHEET SCALE: 5:1

samtec

520 PARK EAST BLVD, NEW ALBANY, IN 47150
PHONE: 812-944-6733 FAX: 812-948-5047
e-Mail: info@SAMTEC.com code: 55322

DESCRIPTION:
.100 IPD1 CONTACT

DWG. NO.
CC79X-XXXX-XX-X

BY: DEAN P 8/12/2004 SHEET 2 OF 2

Mouser Electronics

Authorized Distributor

Click to View Pricing, Inventory, Delivery & Lifecycle Information:

Samtec:

[CC79L-2630-01-S](#) [CC79R-2024-01-L](#) [CC79L-2024-01-F](#) [CC79L-2830-01-L](#) [CC79R-2830-01-L](#) [CC79R-2630-01-S](#)
[CC79L-2630-01-F](#) [CC79R-2630-01-F](#)