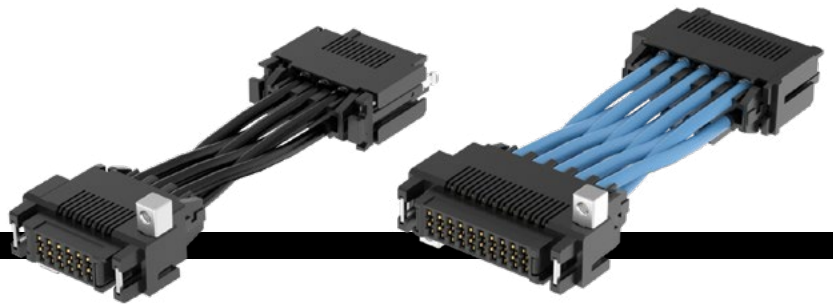


ULTRA MICRO CABLE-TO-CABLE



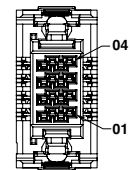
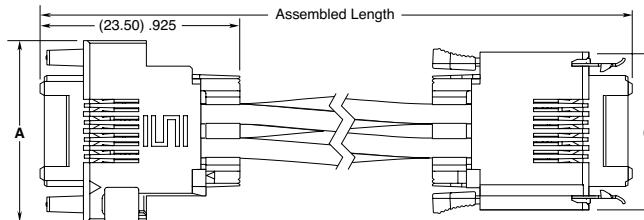
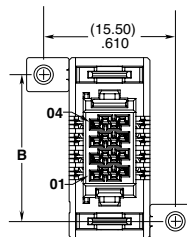
SERIES	NO. OF POSITIONS	PLATING OPTION	WIRE GAUGE	LENGTH	PINOUT
UMPI = Ultra Micro PVC Cable	-02, -03, -04, -05, -06, -07, -08, -09, -10	-L = 10 μ" (0.25 μm) Gold on contact, Tin on tail	-16 = 16 AWG	-"XX.X" = Assembled Length in Inches	(Leave blank for Single ended)
UMPI(T) = Ultra Micro Blue *Teflon™ Fluoropolymer Cable		-S = 30 μ" (0.76 μm) Gold on contact, Tin on tail	-16C = 16 AWG Color Coded Cable (not available with UMPI(T))	Single ended = (76.2 mm) 03.0" min.	-M1 = Metal Latch Pin 01 to Pin 01
		-T = Tin	-18 = 18 AWG	Double ended = (101.6 mm) 04.0" min. (2-4 positions)	-M2 = Metal Latch Pin 01 to Pin N
			-18C = 18 AWG Color Coded Cable (not available with UMPI(T))	Double ended = (127.0 mm) 05.0" min. (5-10 positions)	-P1 = Plastic Latch Pin 01 to Pin 01
					-P2 = Plastic Latch Pin 01 to Pin N

UMPI(T)
Cable Mates:
UMPE(T)
End 2 Mates:
UMPE(T), UMPIT

UMPI(T)
PRELIMINARY

SPECIFICATIONS

Insulator Material:
Black LCP
Contact Material:
Copper Alloy
Plating:
Sn or Au over 50 μ" (1.27 μm) Ni
Wire:
16 or 18 AWG
Voltage Rating:
00 Volt = 16 & 18 AWG PVC
300 Volt = 16 AWG Teflon™
Fluoropolymer
600 Volt = 18 AWG Teflon™
Fluoropolymer



CABLE COLOR CODING	
PIN	COLOR
1	BROWN
2	RED
3	ORANGE
4	YELLOW
5	GREEN
6	BLUE
7	VIOLET
8	GRAY
9	WHITE
10	BLACK

NO. OF POSITIONS	A	B	C
-02	(17.25) .679	(13.25) .522	(14.55) .573
-03	(19.25) .758	(15.25) .600	(16.55) .652
-04	(21.25) .837	(17.25) .679	(18.55) .730
-05	(23.25) .915	(19.25) .758	(20.55) .809
-06	(25.25) .994	(21.25) .837	(22.55) .888
-07	(27.25) 1.073	(23.25) .915	(24.55) .967
-08	(29.25) 1.152	(25.25) .994	(26.55) 1.045
-09	(31.25) 1.230	(27.25) 1.073	(28.55) 1.124
-10	(33.25) 1.309	(29.25) 1.152	(30.55) 1.203

*Teflon™ is a trademark of The Chemours Company FC, LLC used under license by Samtec.

Notes:
Teflon™ Fluoropolymer cable is intended for crimp only. Contact Samtec for solderable cable applications.

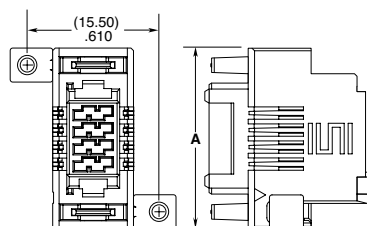
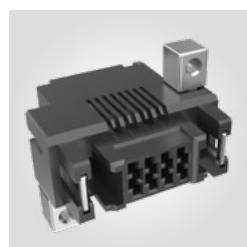
For wiring option information refer to drawings on web.

Some lengths, styles and options are non-standard, non-returnable

View complete specifications at: samtec.com?UMPI & [samtec.com?UMPI\(T\)](http://samtec.com?UMPI(T))

UMPI CABLE HOLDER (Required for use with IMPC)

SERIES	NUMBER OF POSITIONS	LEAD STYLE
IMPC	-02, -03, -04, -05, -06, -07, -08, -09, -10	01 = 16 AWG
		02 = 18 AWG



IMPC	NO. OF POSITIONS	LATCH OPTION	CC489	01	PLATING	PACKAGING
------	------------------	--------------	-------	----	---------	-----------

-02, -03, -04, -05, -06, -07, -08, -09, -10

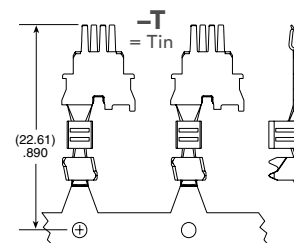
-P1
= Panel Mount

-L
= 10 μ" (0.25 μm) Gold on contact, Tin on tail

-R
= Full Reel (5,000 Contacts)

-S
= 30 μ" (0.76 μm) Gold on contact, Tin on tail

-M
= Mini Reel (1,000 Contacts)



-B
= Bubble Bag (35 Contacts)

TOOLING

Hand Tool: CAT-HT-489-1618-13

Mini Applicator: CAT-MC-489-1618-XX-01

Note:
Some lengths, styles and options are non-standard, non-returnable.

View complete specifications at: samtec.com?IMPC & samtec.com?CC489

Mouser Electronics

Authorized Distributor

Click to View Pricing, Inventory, Delivery & Lifecycle Information:

Samtec:

[CC489-01-L-B](#) [CC489-01-L-R](#) [CC489-01-S-B](#) [CC489-01-S-R](#) [CC489-01-T-B](#) [CC489-01-T-R](#) [CC489-01-L-M](#)
[CC489-01-S-M](#) [CC489-01-T-M](#)