



ACCLIMATE™

MCRK-8-S



CC393-2830-L-S



MCRK, CC393 SERIES

8 SERIES IP67 FIELD TERMINATION KIT

Mates with:
MCP(K)

SPECIFICATIONS

For complete specifications
see www.samtec.com?MCRK

Insulator Material:

PPS

Contact Material:

Phosphor Bronze

Operating Temp Range:

-20 °C to +80 °C

Gasket Material:

Neoprene Rubber

Lock Washer:

Phosphor Bronze, Ni plated

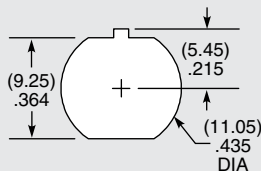
Hex Nut:

Brass, Ni plated

RoHS Compliant:

Yes

PANEL OPENING



Note: Samtec's MCRK Series is dual sourced by Hirose Electric Co., LTD.

MCRK

8

GENDER

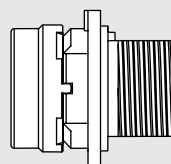
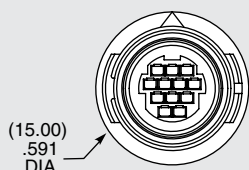
-S

= Socket (12 positions)

DUST CAPS

• DCA-MCR-8

Visit sealedio.samtec.com for a complete list of sealed systems



SPECIFICATIONS

For complete specifications
see www.samtec.com?CC393

Plating:

10 µm (0.25 µm) Gold on contact

TOOLING

• Hand Tool:
CAT-HT-393-2430-13

• Mini Applicator
(28-30 AWG):
CAT-MC-393-2830-XX-01

• Extraction Tool:
CAT-EX-MCX-8-01

TYPE

LEAD STYLE

L

PACKING OPTION

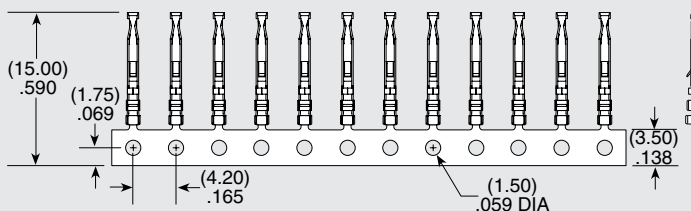
CC393
= Contact

-2830
= 28 to 30 AWG

-S
= Strip
(15 contacts)

-M
= Mini Reel
(1,000 - 5,000 contacts)

-R
= Reel
(30,000 contacts)



WWW.SAMTEC.COM

Unless otherwise approved in writing by Samtec, all parts and components are designed and built according to Samtec's specifications which are subject to change without notice.

Mouser Electronics

Authorized Distributor

Click to View Pricing, Inventory, Delivery & Lifecycle Information:

[Samtec:](#)

[CC393-2830-L-R](#)