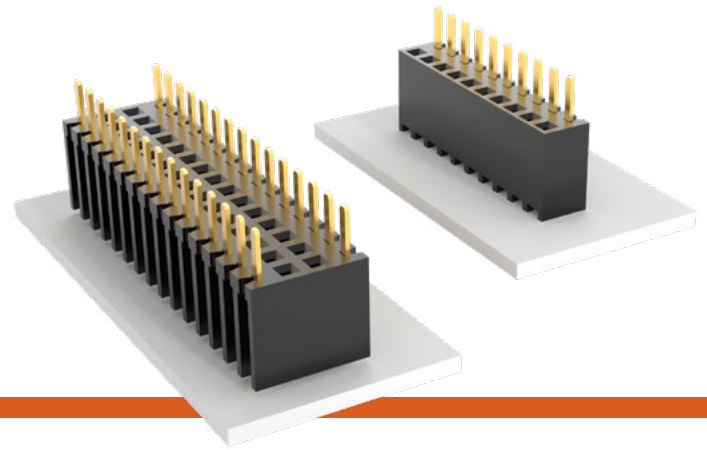


# BOTTOM MOUNT SOCKET STRIPS

(2.54 mm) .100" PITCH • BSW SERIES



## BSW

### Mates:

TSW, MTSW, HTSW,  
MTLW, TSM, EW, ZW,  
HW, DW, PHT

## FEATURES

- Bottom mount socket strips accept .025" SQ terminals.
- Ideal for soldering and plugging from the same side of the board.
- For low-profile connections and high temperature soldering.

## SPECIFICATIONS

### Insulator Material:

Black Thermoplastic

### Insulation Resistance:

5000 MW min

### Contact Material:

Phosphor Bronze

### Plating:

Au or Sn over

50 μ" (1.27 μm) Ni

### Operating Temp Range:

-55 °C to +125 °C with Gold

-55 °C to +105 °C with Tin

### Withstanding Voltage:

1000 VRMS @ 60 Hz

### Insertion Depth:

(3.68 mm) .145" to

(6.35 mm) .250"

## PROCESSING

### Lead-Free Solderable:

Wave only

## ALSO AVAILABLE

Other Plating  
(MOQ Required)

### Note:

Some lengths, styles and options are non-standard, non-returnable.

BSW	1	NO. PINS PER ROW	LEAD STYLE	PLATING OPTION	ROW OPTION	OTHER OPTION
-----	---	------------------	------------	----------------	------------	--------------

02 thru 36

**-04**  
= Standard Lead

**-24**  
= Low Insertion Force

**-L**  
= 10 μ" (0.25 μm) Gold contact, Matte Tin on tail

**-G**  
= 20 μ" (0.51 μm) Gold contact, Gold Flash on tail

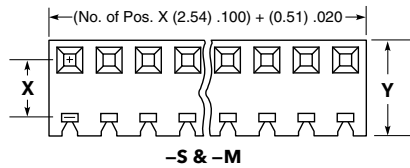
**-T**  
= Matte Tin  
(Not available with Low Insertion Force)

**-S**  
= Single Row

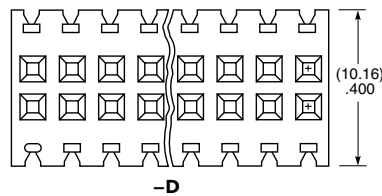
**-M**  
= Single Row More Plug Space

**-D**  
= Double Row

**-S**  
= Standoffs for single and double rows only (-S & -D only)

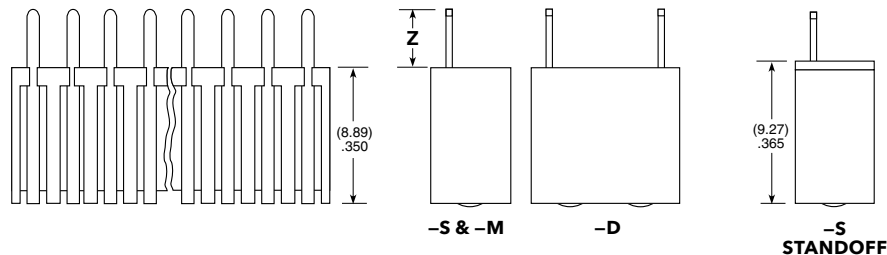


ROW OPTION	X	Y
-S	(2.54) .100	(5.08) .200
-M	(3.81) .150	(6.35) .250

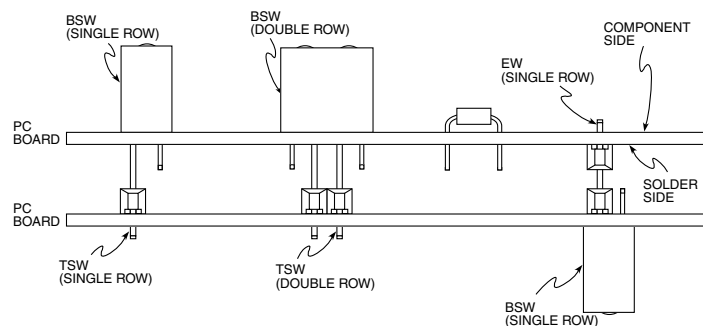


ROW OPTION	Z
-S*	(4.31) .170
-M	(3.43) .135
-D*	(4.32) .170

\*Less (0.38 mm) .015" with standoffs



## APPLICATIONS



# Mouser Electronics

Authorized Distributor

Click to View Pricing, Inventory, Delivery & Lifecycle Information:

## Samtec:

[BSW-110-04-G-D](#) [BSW-106-04-L-S](#) [BSW-120-04-G-S](#) [BSW-107-04-G-D](#) [BSW-105-04-G-D](#) [BSW-106-04-G-S](#)  
[BSW-107-04-T-D](#) [BSW-114-04-G-S](#) [BSW-114-04-S-S](#) [BSW-110-04-G-S](#) [BSW-108-04-S-S](#) [BSW-110-04-T-D](#) [BSW-](#)  
[103-04-T-D](#) [BSW-104-04-T-S](#) [BSW-108-04-G-D](#) [BSW-116-04-L-S](#) [BSW-108-04-T-D](#) [BSW-116-04-T-S](#) [BSW-116-04-](#)  
[S-S](#) [BSW-103-04-G-S](#) [BSW-105-04-G-S](#) [BSW-120-04-T-S](#) [BSW-110-04-T-S](#) [BSW-104-04-G-S](#) [BSW-116-04-G-S](#)  
[BSW-110-04-S-D](#) [BSW-116-04-S-M](#) [BSW-106-04-T-S](#) [BSW-112-04-G-S](#) [BSW-106-04-S-S](#) [BSW-104-04-T-M](#) [BSW-](#)  
[113-04-T-D](#) [BSW-112-04-S-S](#) [BSW-105-04-T-D](#) [BSW-103-04-T-S](#) [BSW-107-04-G-S](#) [BSW-110-04-S-S](#) [BSW-107-04-](#)  
[T-S](#) [BSW-107-04-T-M](#) [BSW-104-04-G-D](#) [BSW-108-04-L-D](#) [BSW-108-04-T-S](#) [BSW-106-04-G-D-S](#) [BSW-109-04-T-D](#)  
[BSW-105-04-T-S](#) [BSW-107-04-L-D](#) [BSW-103-04-S-S](#) [BSW-107-04-S-D](#) [BSW-107-04-L-S](#) [BSW-109-04-T-S](#) [BSW-](#)  
[110-04-T-E](#) [BSW-120-04-T-M](#) [BSW-102-04-S-S](#) [BSW-115-04-T-S](#) [BSW-106-04-T-D](#) [BSW-108-04-G-S](#) [BSW-111-04-](#)  
[T-S](#) [BSW-102-04-T-S-S](#) [BSW-103-04-G-D](#) [BSW-104-04-S-S-S](#) [BSW-102-04-L-D](#) [BSW-104-04-L-D](#) [BSW-109-04-L-D](#)  
[BSW-104-04-T-D](#) [BSW-106-04-S-D](#) [BSW-103-04-S-D](#) [BSW-104-04-G-S-S](#) [BSW-113-04-G-D](#) [BSW-136-24-G-S](#)  
[BSW-112-24-G-S](#) [BSW-110-24-S-D](#) [BSW-116-04-T-D](#) [BSW-128-04-S-D](#) [BSW-130-04-T-D](#) [BSW-130-04-T-S](#) [BSW-](#)  
[132-04-T-S](#) [BSW-132-24-S-D](#) [BSW-102-04-T-D](#) [BSW-102-04-T-S](#) [BSW-103-04-T-M](#) [BSW-104-24-S-D](#) [BSW-105-04-](#)  
[T-M](#) [BSW-105-04-T-S-S](#) [BSW-106-04-S-E](#) [BSW-107-04-S-M](#) [BSW-109-04-S-M](#) [BSW-110-04-S-D-S](#) [BSW-111-04-G-](#)  
[S](#) [BSW-111-04-S-D](#) [BSW-111-04-S-M](#) [BSW-112-04-G-S-S](#) [BSW-113-04-G-D-S](#) [BSW-113-24-S-S](#) [BSW-115-04-G-M](#)  
[BSW-116-24-S-D](#) [BSW-116-24-S-D-S](#) [BSW-117-04-G-D](#) [BSW-118-04-G-D](#) [BSW-118-04-G-S](#) [BSW-120-04-T-S-S](#)