

75 Ω BNC TO 12 GHz



BNC Cable Assemblies

RFC6T, RFA6T, RFB6T, RF179



SERIES	END 1 CONNECTOR	END 2 CONNECTOR	OVERALL LENGTH
RFC6T* = 12G-SDI, Belden 4694R Cable	-74SP3 = 75 Ω BNC Straight Plug		-“XXXX” = Overall Length in millimeters
RFA6T = RG 6 Cable	-D4SP3 = 75 Ω BNC Die Cast Straight Plug (RFA6T, RFB6T, RF179 only)		-0300 (300 mm) 11.81" minimum (RFA6T, RFB6T, RFC6T)
RFB6T = Belden 1694A Cable	-74BJ3 = 75 Ω BNC Bulkhead Jack (RF179 only)		-0100 (100 mm) 3.94" minimum (RF179)
RF179 = RG 179 Cable	-74RP3 = 75 Ω BNC Right-angle Plug (RFA6T, RFB6T, RFC6T only)		

ALSO AVAILABLE

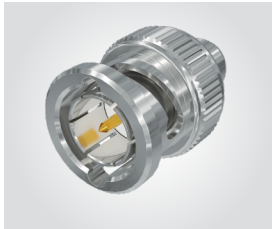
75 Ω: DIN 1.0/2.3, HDBNC = RFA6T, RFB6T, RFC6T

75 Ω: DIN 1.0/2.3, SMB, MCX, MMCX = RF179

*Designed to meet SMPTE 2082 12G-SDI specifications.

BNC Cable Connectors

BNC7T-CA



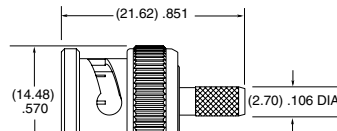
Supplied with pins, washers, nuts, gaskets and ferrules. See website for dimensions.

CONNECTORS FOR INDUSTRY STANDARD CABLES	
**BNC7T-P-C-GN-ST-CA3	Machined, RG 179 Cable
**BNC7T-P-C-GN-RA-CA3	Machined, RG 179 Cable
**BNC7T-P-C-GN-ST-CA6	*Machined, RG 6 Cable
**BNC7T-P-C-GN-RA-CA6	*Machined, RG 6 Cable
**BNC7T-P-C-GN-ST-CA6B	Belden 4694R Cable
**BNC7T-P-C-GN-RA-CA6B	Belden 4694R Cable
**BNC7T-J-C-GN-ST-BH3	Machined, Bulkhead, RG 179 Cable
BNC7T-P-C-GN-ST-CA3D	Die Cast, RG 179 Cable
BNC7T-P-C-GN-ST-CA6D	Die Cast, RG 179 Cable

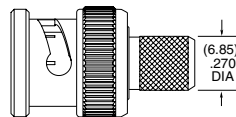
**Add "-B" to the end of the part number for bulk packaging

*Designed to meet SMPTE 2082 12G-SDI specifications.

P-C = Cable Plug
J-C = Cable Jack
GN = Plating (10 μ" Gold on contact, Nickel on outer contact and shell)
ST = Straight
RA = Right-angle

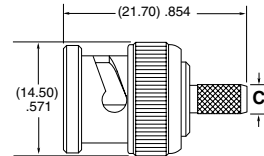


-CA3D

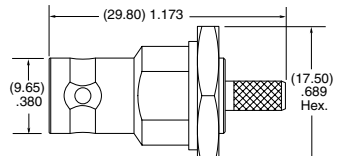


-CA6D

DIE CAST



-P-ST-CA3 & -P-ST-CA6



-J-ST-BH3

MACHINED

Note:
Additional plating options available on Cable Assemblies, Cable Connectors and Board Connectors. Contact RFGroup@samtec.com

TERMINATION	C (DIA)
-CA3	(2.70) .106
-CA6	(6.85) .270

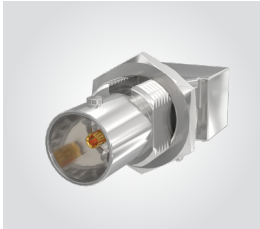
75 Ω DIE CAST BNC TO 12 GHz

BNC Board Connectors

BNC7T-TH, BNC7T-BH, BNC7T-BM, BNC7T-EM

Cable Mates:

RF179, RFA6T, RFB6T, RFC6T, GRF7H-C



BNC7T	GENDER	TYPE	PLATING	ORIENTATION	TERMINATION	PACKAGING
	-J = Jack	-P = PCB Mount	-GN = 10 μ" (0.25 μm) Gold contact, 100 μ" (2.54 μm) Nickel Shell	-ST = Straight -RA = Right-angle Bulkhead/Panel Mount	-TH2D = Tall Through-hole Die Cast (-ST only) -BH2D* = Low Profile Die Cast Bulkhead Through-hole (-RA only) -BM1D* = Low Profile Die Cast Bulkhead Mixed Technology for (1.60 mm) .062" PCB (-RA only) -BM2D* = Low Profile Die Cast Bulkhead Mixed Technology for (3.18 mm) .125" PCB (-RA only) -EM1D* = Edge Mount Die Cast Bulkhead/Panel Mount for (1.60 mm) .062" PCB (-ST only) -EM2D* = Edge Mount Die Cast Bulkhead/Panel Mount for (2.40 mm) .093" PCB (-ST only)	Leave blank for individually bagged. -B = Bulk packaged (-BH2D only)
	<p>-RA-BM1D (BALANCED FOR PICK-AND-PLACE)</p>					
	<p>-RA-BH2D</p>					
	<p>-ST-EM1D & -ST-EM2D</p>					
	<p>-ST-TH2D</p>					

Notes:
Contact RFGroup@samtec.com for 12G-SDI PCB mount launch characteristics.

Designed to meet SMPTE 2082 12G-SDI specifications.

Additional plating options available on Board Connectors. Contact RFGroup@samtec.com

*Lock washers & knurled nuts supplied with bulkhead/panel mount options

75 Ω MACHINED BNC TO 12 GHz

BNC Board Connectors

BNC7T-TH, BNC7T-BH, BNC7T-EM

Cable Mates:

RF179, RFA6T, RFB6T, RFC6T, GRF7H-C



BNC7T	GENDER	TYPE	PLATING	ORIENTATION	TERMINATION	PACKAGING
	-J = Jack	-P = PCB Mount	-GN = 10 μ" (0.25 μm) Gold contact, 100 μ" (2.54 μm) Nickel Shell	-ST = Straight -RA = Right-angle Bulkhead/Panel Mount	-TH1 = Standard Through-hole (-ST only) -BH1* = Standard Bulkhead Through-hole (-RA only) -EM1* = Edge Mount Bulkhead/Panel Mount for (1.60 mm) .062" PCB (-ST only) -EM2* = Edge Mount Bulkhead/Panel Mount for (2.40 mm) .093" PCB (-ST only)	Leave blank for individually bagged. -B = Bulk packaged (-BH1 only)
	<p>-ST-EM1 & -ST-EM2</p>					
	<p>-ST-TH1</p>					
	<p>-RA-BH1</p>					

Notes:
Contact RFGroup@samtec.com for 12G-SDI PCB mount launch characteristics.

Designed to meet SMPTE 2082 12G-SDI specifications.

Additional plating options available on Board Connectors. Contact RFGroup@samtec.com

*Lock washers & knurled nuts supplied with bulkhead/panel mount options

Mouser Electronics

Authorized Distributor

Click to View Pricing, Inventory, Delivery & Lifecycle Information:

[Samtec:](#)

[BNC7T-J-P-HN-RA-BH1](#) [BNC7T-J-P-GN-RA-BH1](#) [BNC7T-J-P-HN-ST-EM1](#) [BNC7T-J-P-HN-ST-EM2](#) [BNC7T-J-P-HN-ST-TH1](#)