
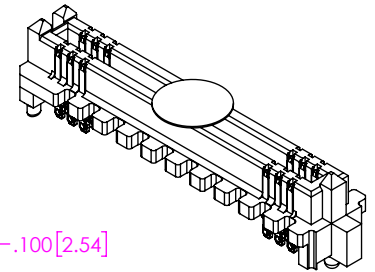
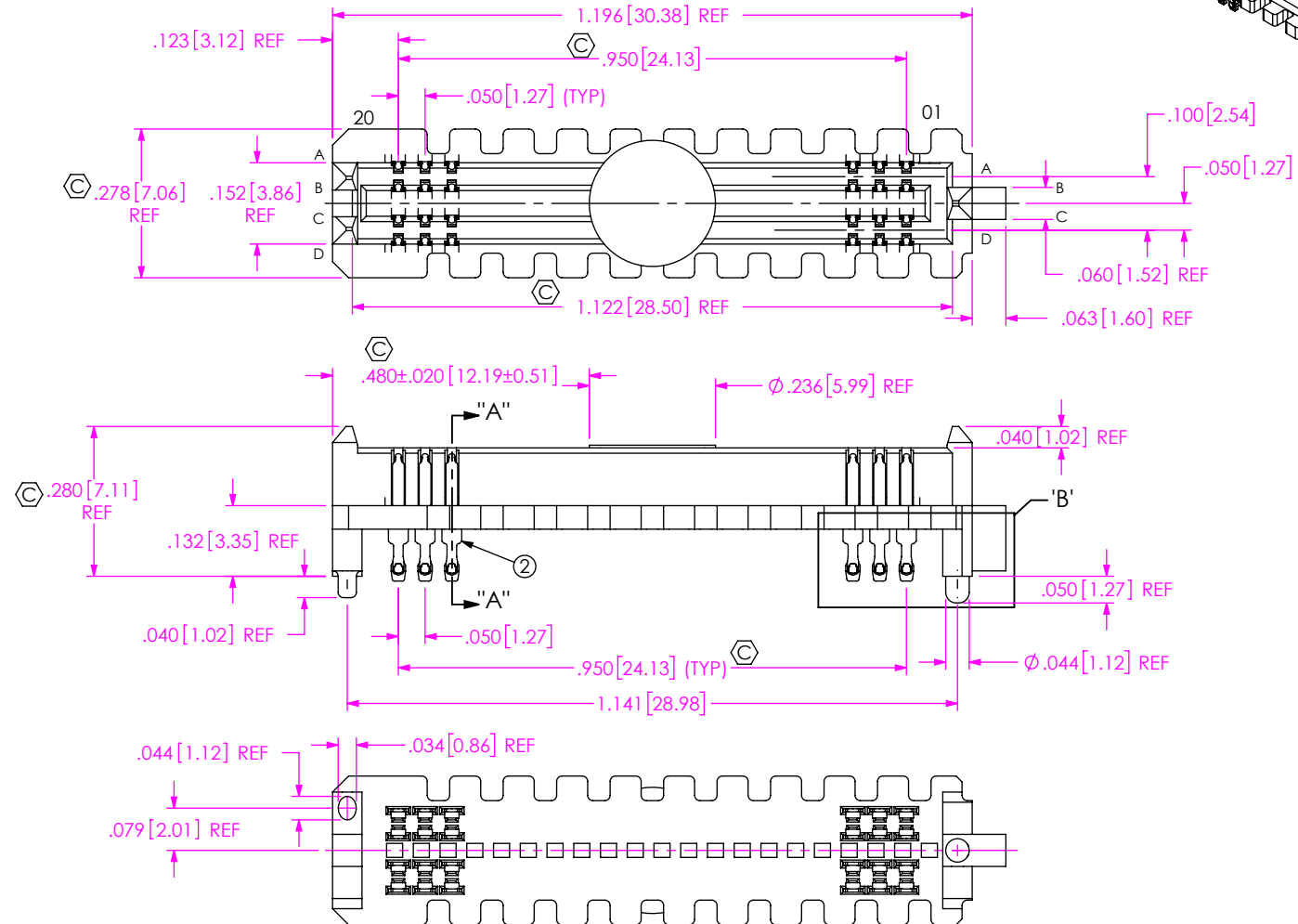


DO NOT  
SCALE FROM  
THIS PRINT

NOTES:

1. **STANDARD PART SET UP AS ASP FOR VITA 57.4.**
2.  REPRESENTS A CRITICAL DIMENSION.
3. MINIMUM PUSHOUT FORCE: 0.50 LBS.
4. DIMENSION MUST BE MEASURED USING INSPECTION FIXTURE AT-1817-836-1, USE CO-AU-WI-2003-M FOR PROCESS.
5. MEASURED FIRST & LAST POSITIONS ONLY, ALL ROW.
6. PARTS TO BE PACKAGED IN TAPE & REEL.  
ATTACH LABEL "SEAX-0001" TO EACH TAPE & REEL PACKAGE.
7. FOR QUANTITIES UP TO 49 PIECES, NO LEADER, TRAILER, OR REEL WILL BE SUPPLIED.  
FOR QUANTITIES 50 - 124, NO LEADER OR TRAILER WILL BE SUPPLIED.



ITEM NO.	PART NUMBER	QUANTITY	MATERIAL
1	SEAM-20-03.5-04-A	1.0000	VECTRA E130i, COLOR: BLACK
2	NEW-SUB-T-1M36-03.5-STL-1	80.000	COPPER ALLOY/LEADED SOLDER
3	K-DOT-.236-.343-.005	1.0000	POLYIMIDE FILM
4	CT-SEAM028MS	00333	CONDUCTIVE POLYMER

UNLESS OTHERWISE SPECIFIED,  
DIMENSIONS ARE IN INCHES.

TOLERANCES ARE:

## DECIMALS

XX: +.01 [0.3]

$$.XXX: \pm .005[0.13]$$
$$.XXX: \pm .0020[0.051]$$

**PROPRIETARY NOTE**

THIS DOCUMENT CONTAINS CONFIDENTIAL AND PROPRIETARY INFORMATION AND ALL DESIGN, MANUFACTURING, REPRODUCTION, USE, PATENT RIGHTS AND SALES RIGHTS ARE EXPRESSLY RESERVED BY SAMTEC, INC. THIS DOCUMENT SHALL NOT BE DISCLOSED, IN WHOLE OR PART, TO ANY UNAUTHORIZED PERSON OR ENTITY NOR REPRODUCED, TRANSFERRED OR INCORPORATED IN ANY OTHER PROJECT IN ANY MANNER WITHOUT THE EXPRESS WRITTEN CONSENT OF SAMTEC, INC.

DO NOT SCALE DRAWING

SHEET SCALE: 1:1

PLATING:

CONTACT AREA: .000030 GOLD OVER .000050 NICKEL

REMAINDER: .000200 REF TIN/LEAD (90/10) OVER .000050 NICKEL



520 PARK EAST BLVD, NEW ALBANY, IN 47150  
PHONE: 812-944-6733 FAX: 812-948-5047  
e-Mail [info@SAMTEC.com](mailto:info@SAMTEC.com) code 55322

DESCRIPTION:

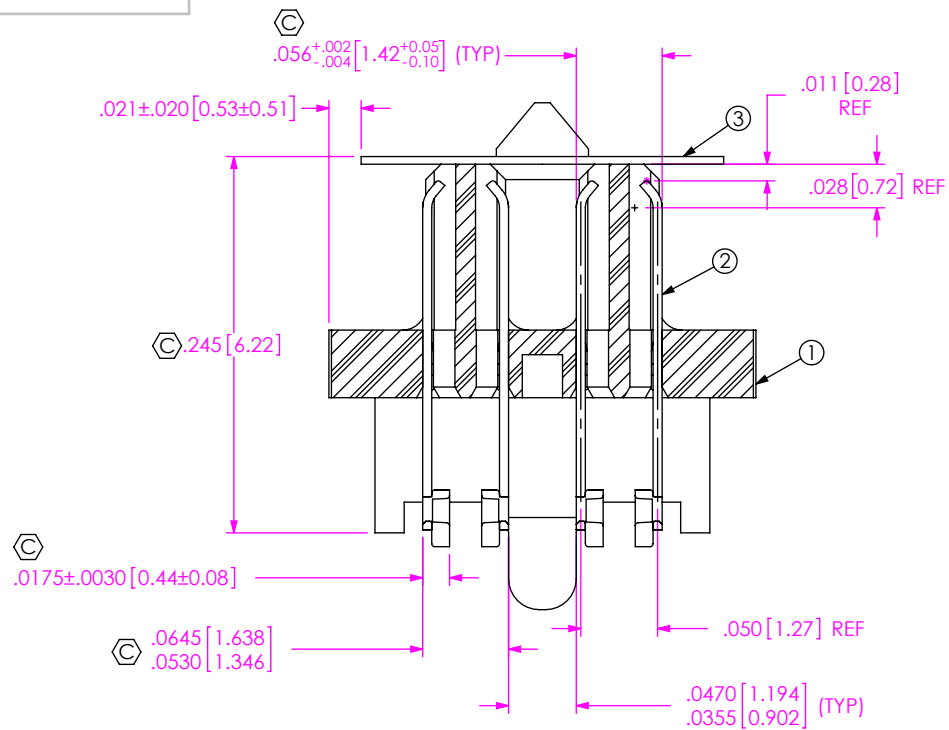
VITA 57.4 .050 PITCH TERMINAL ARRAY ASM

DWG. NO.

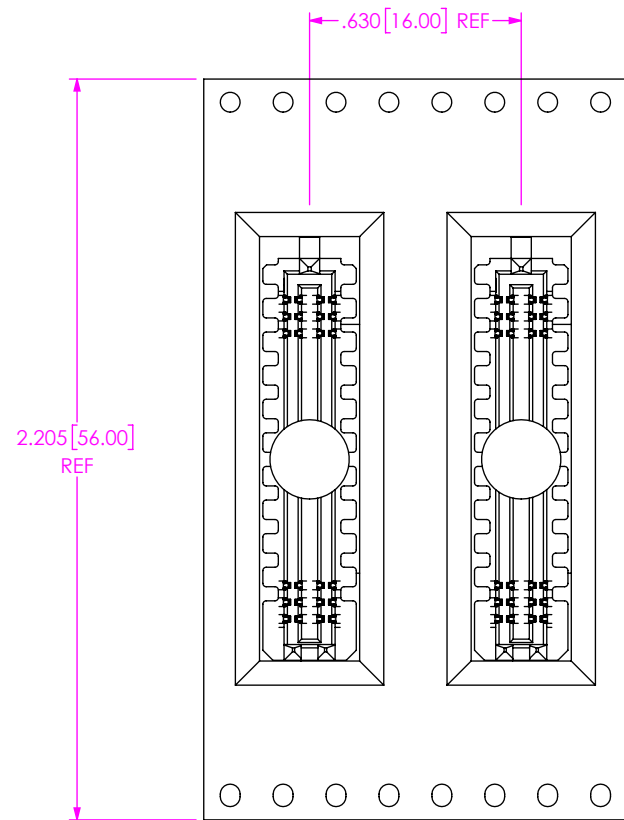
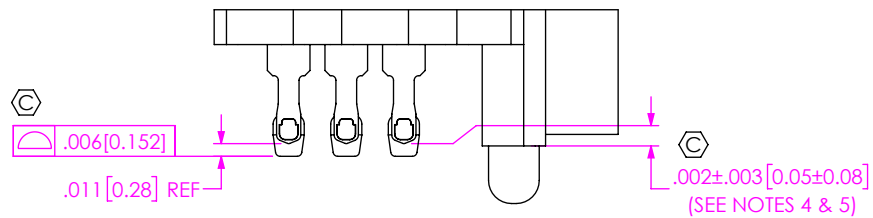
ASP-208572-01

BY: J. BROWNING 01/21/2019	SHEET 1 OF 3
----------------------------	--------------

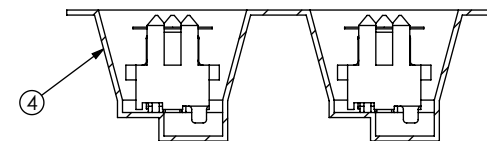
F:\DWG\MISC\MKTG\ASP-208572-01-MKT.SLDDRW



SECTION "A"-"A"  
SCALE 8:1



USER DIRECTION OF UN-REELING  
POCKET NOT DETAILED



PACKAGING VIEW

DETAIL 'B'  
SCALE 6:1

PROPRIETARY NOTE  
THIS DOCUMENT CONTAINS CONFIDENTIAL AND  
PROPRIETARY INFORMATION AND ALL DESIGN,  
MANUFACTURING, REPRODUCTION, USE, PATENT RIGHTS  
AND SALES RIGHTS ARE EXPRESSLY RESERVED BY SAMTEC,  
INC. THIS DOCUMENT SHALL NOT BE DISCLOSED, IN WHOLE  
OR PART, TO ANY UNAUTHORIZED PERSON OR ENTITY NOR  
REPRODUCED, TRANSFERRED OR INCORPORATED IN ANY  
OTHER PROJECT IN ANY MANNER WITHOUT THE EXPRESS  
WRITTEN CONSENT OF SAMTEC, INC.

SHEET SCALE: 1:1

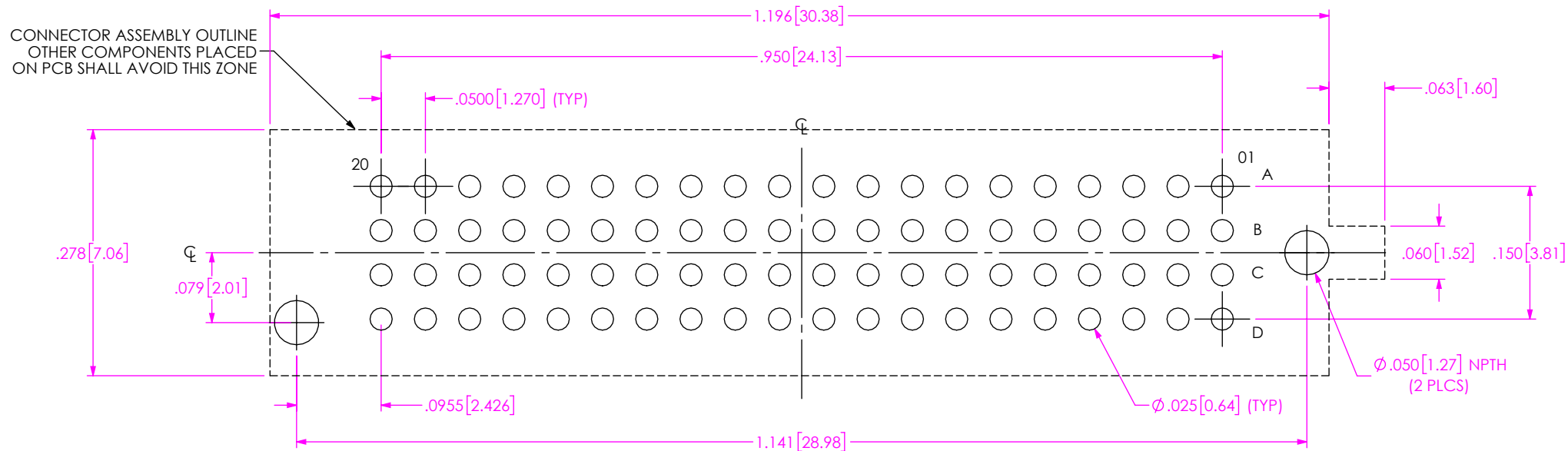
**samtec**

520 PARK EAST BLVD, NEW ALBANY, IN 47150  
PHONE: 812-944-6733 FAX: 812-948-5047  
e-Mail: info@SAMTEC.com code 55322

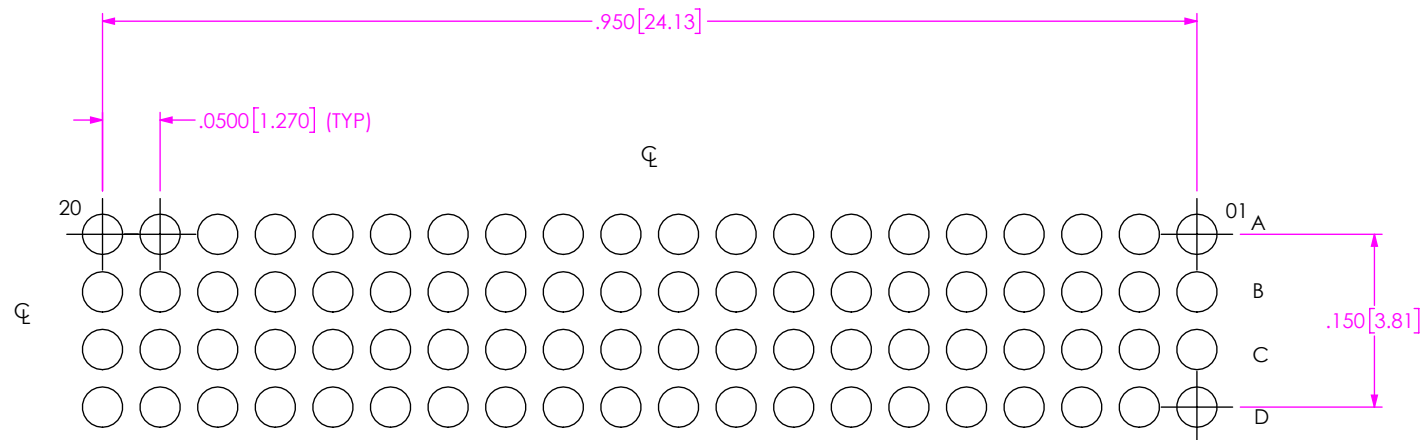
DESCRIPTION:  
VITA 57.4 .050 PITCH TERMINAL ARRAY ASM

DWG. NO.  
ASP-208572-01

BY: J. BROWNING 01/21/2019 SHEET 2 OF 3



RECOMMENDED PCB LAYOUT  
ALL DIMENSIONS ARE SYMMETRIC ABOUT CENTERLINE



RECOMMENDED STENCIL LAYOUT  
STENCIL TO BE .0060[0.152] THICK

**PROPRIETARY NOTE**

THIS DOCUMENT CONTAINS CONFIDENTIAL AND PROPRIETARY INFORMATION AND ALL DESIGN, MANUFACTURING, REPRODUCTION, USE, PATENT RIGHTS AND SALES RIGHTS ARE EXPRESSLY RESERVED BY SAMTEC, INC. THIS DOCUMENT SHALL NOT BE DISCLOSED, IN WHOLE OR PART, TO ANY UNAUTHORIZED PERSON OR ENTITY NOR REPRODUCED, TRANSFERRED OR INCORPORATED IN ANY OTHER PROJECT IN ANY MANNER WITHOUT THE EXPRESS WRITTEN CONSENT OF SAMTEC, INC.

SHEET SCALE: 6:1

**santec**

520 PARK EAST BLVD, NEW ALBANY, IN 47150  
PHONE: 812-944-6733 FAX: 812-948-5047  
e-Mail [info@SAMTEC.com](mailto:info@SAMTEC.com) code 55322

DESCRIPTION:  
VITA 57.4 .050 PITCH TERMINAL ARRAY ASM

DWG. NO.

ASP-208572-01

BY: J. BROWNING	01/21/2019	SHEET 3 OF 3
-----------------	------------	--------------

# Mouser Electronics

Authorized Distributor

Click to View Pricing, Inventory, Delivery & Lifecycle Information:

[Samtec:](#)

[ASP-208572-01](#)