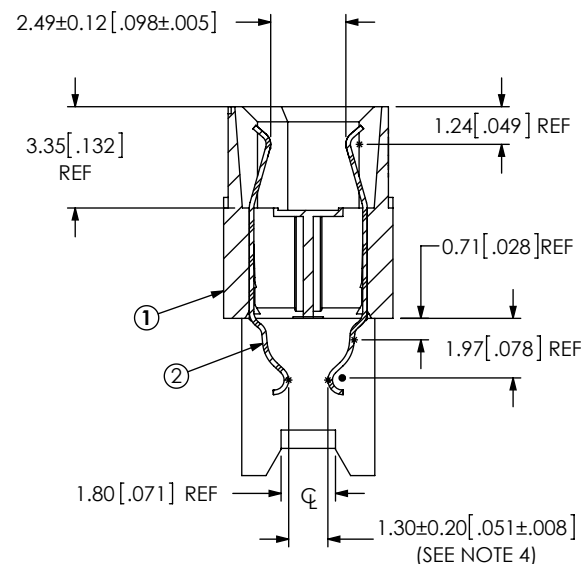
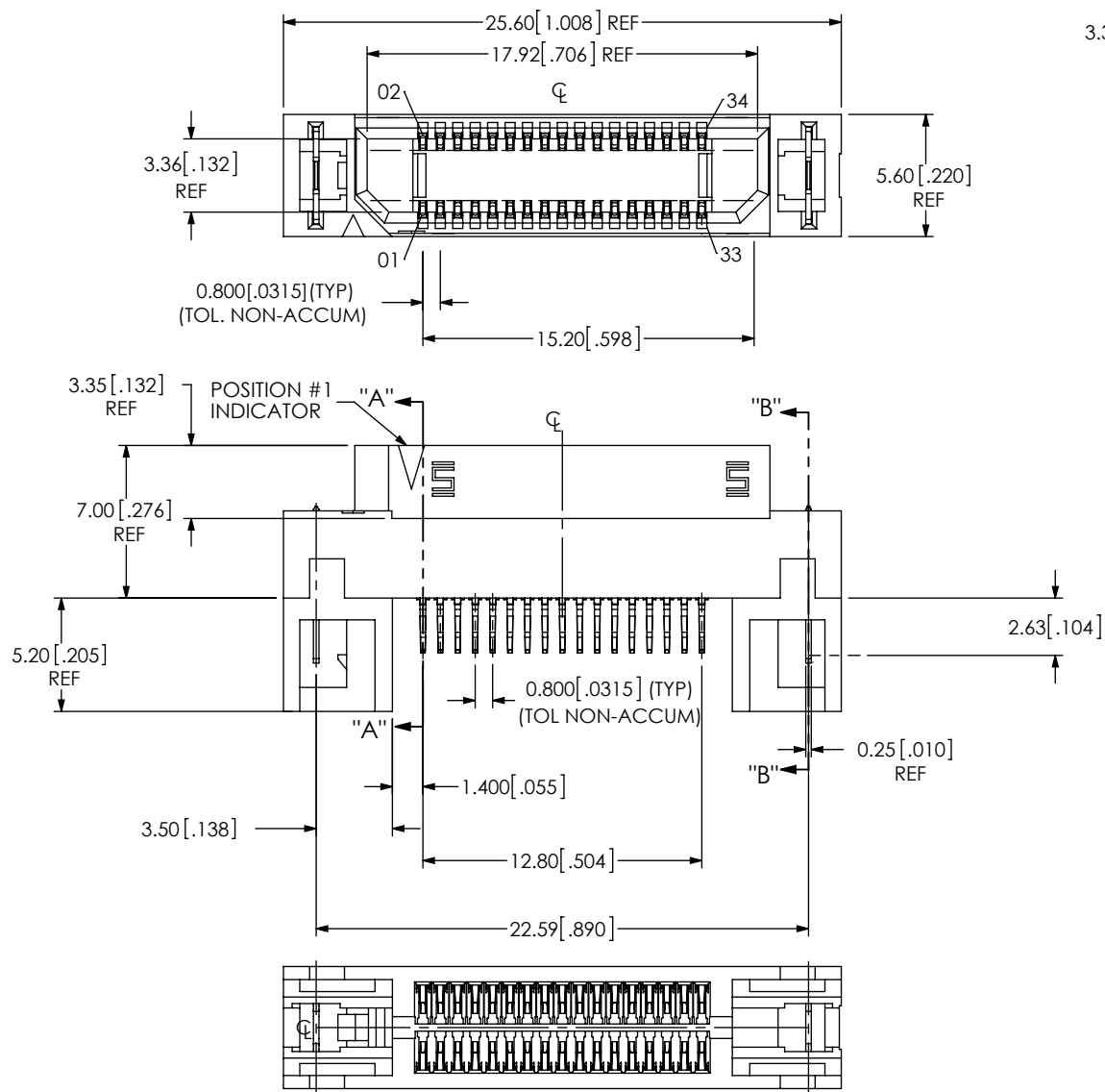


## REVISION A

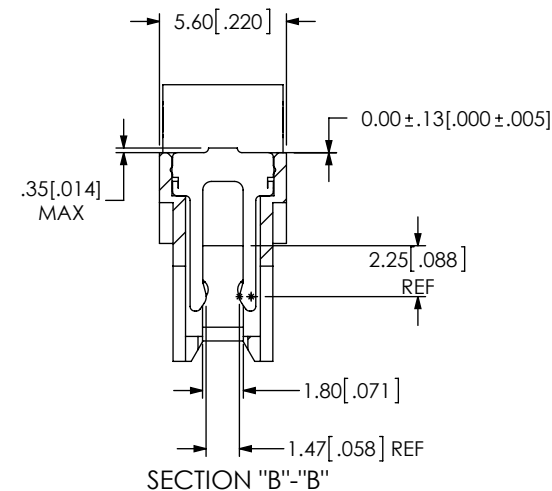
DO NOT  
SCALE FROM  
THIS PRINT

NOTES:

- NOTES:
1. 17 POSITIONS NOT AVAILABLE AS STANDARD.
  2. REPRESENTS A CRITICAL DIMENSION.
  3. MINIMUM PUSHOUT FORCE: 2.22N [.5 LB].
  4. TO BE MEASURED USING GAGE PINS.
  5. PARTS TO BE PACKAGED IN TAPE & REEL.



SECTION "A"-"A"



SECTION "B"- "B"

| ITEM NO. | PART NUMBER    | QUANTITY | MATERIAL                       |
|----------|----------------|----------|--------------------------------|
| 1        | ERF8-017-D-EM2 | 1.0000   | VECTRA E130i, COLOR: BLACK     |
| 2        | C-221-01-S     | 34.000   | BeCu, ALLOY 390 HT             |
| 3        | WT-17-01-T     | 2.0000   | PHOS BRONZE, 510 SPRING TEMPER |
| 4        | CI-ASP4040MS   | .00444   | CONDUCTIVE POLYMER             |

UNLESS OTHERWISE SPECIFIED,  
DIMENSIONS ARE IN INCHES.

TOLERANCES ARE:

| DECIMALS | ANGLES |
|----------|--------|
|----------|--------|

XX: +.01 [.3]

 $\text{XXX: } \pm .005[.13]$ 

.XXX:  $\pm 0.0020[.051]$

PROPRIETARY NOTE

**PROPRIETARY NOTE**  
THIS DOCUMENT CONTAINS INFORMATION  
CONFIDENTIAL AND PROPRIETARY TO  
SAMTEC, INC. AND SHALL NOT BE REPRODUCED  
OR TRANSFERRED TO OTHER DOCUMENTS OR  
DISCLOSED TO OTHERS OR USED FOR ANY  
PURPOSE OTHER THAN THAT WHICH IT WAS  
OBTAINED WITHOUT THE EXPRESSED WRITTEN  
CONSENT OF SAMTEC, INC.

**PLATING:**

CONTACTS:

CONTACT AREA: .000030 GOLD OVER .000050 NICKEL  
REMAINDER: .000200 REF TIN OVER .000050 NICKEL.

WELD TABS:

ENTIRE TAB: .000200 REF TIN OVER .000050 NICKEL

c:\enterprisevault\DWG\MISC\MKTG\ASP-177706-02-MKT.SLDDRW

DO NOT SCALE DRAWING

SHEET SCALE: 3:1

|              |  |
|--------------|--|
| DESCRIPTION: |  |
|--------------|--|

### MODIFIED ERF8 ASSEMBLY

DWG. NO.

ASP-177706-02

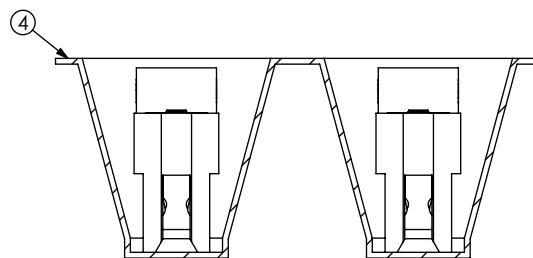
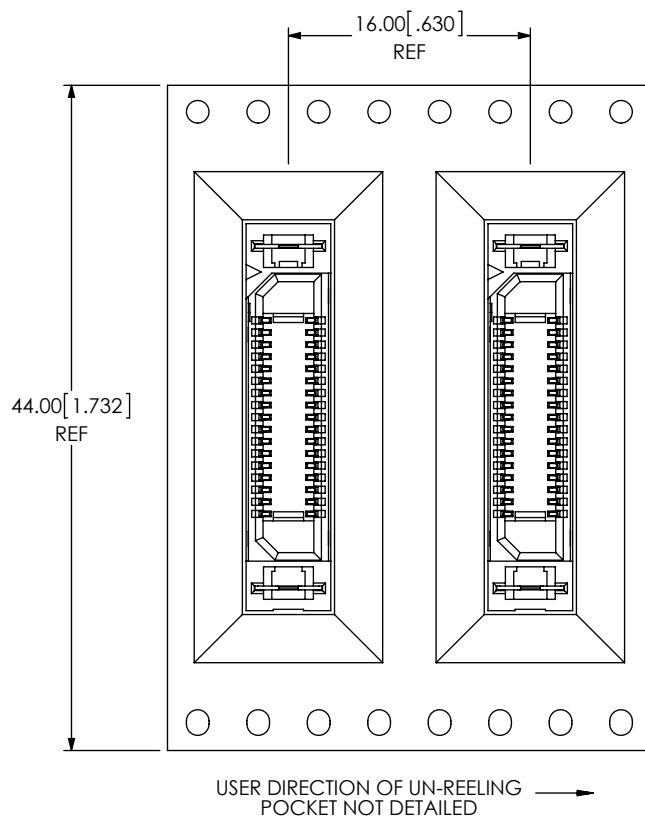
BY: WHELAN

09/16/2013

3 SHEET 1 OF 2



520 PARK EAST BLVD, NEW ALBANY, IN 47150  
PHONE: 812-944-6733 FAX: 812-948-5047  
e-Mail [info@SAMTEC.com](mailto:info@SAMTEC.com) code 55322



PACKAGING VIEW

PROPRIETARY NOTE

THIS DOCUMENT CONTAINS INFORMATION  
CONFIDENTIAL AND PROPRIETARY TO  
SAMTEC, INC. AND SHALL NOT BE REPRODUCED  
OR TRANSFERRED TO OTHER DOCUMENTS OR  
DISCLOSED TO OTHERS OR USED FOR ANY  
PURPOSE OTHER THAN THAT WHICH IT WAS  
OBTAINED WITHOUT THE EXPRESSED WRITTEN  
CONSENT OF SAMTEC, INC.

**samtec**

520 PARK EAST BLVD, NEW ALBANY, IN 47150  
PHONE: 812-944-6733 FAX: 812-948-5047  
e-Mail info@SAMTEC.com code 55322

SHEET SCALE: 2:1

DESCRIPTION:  
MODIFIED ERF8 ASSEMBLY

DWG. NO.  
ASP-177706-02

BY: WHELAN 09/16/2013 SHEET 2 OF 2

# Mouser Electronics

Authorized Distributor

Click to View Pricing, Inventory, Delivery & Lifecycle Information:

[Samtec:](#)

[ASP-177706-02](#)